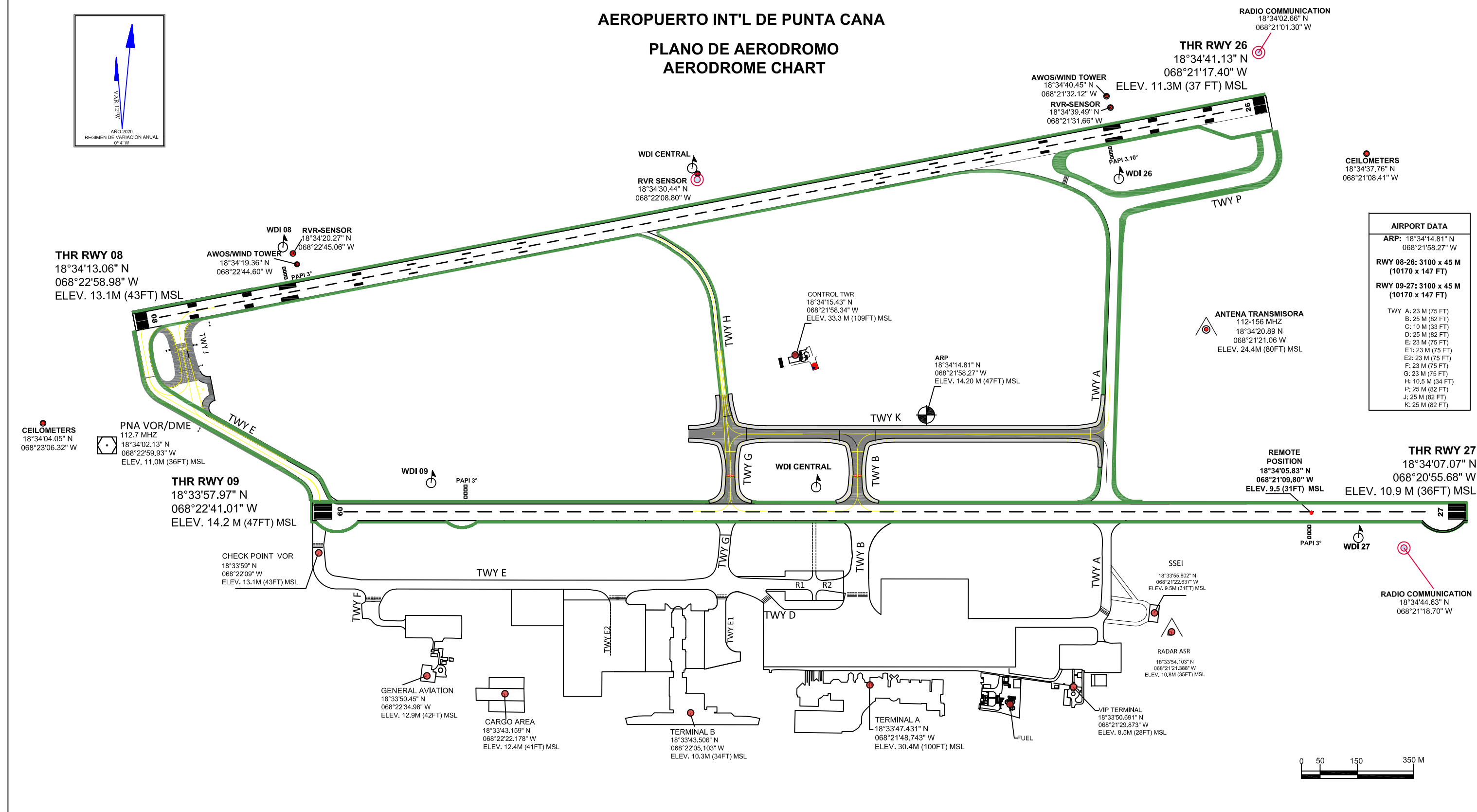
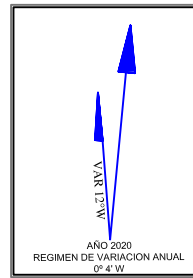


AEROPUERTO INT'L DE PUNTA CANA PLANO DE AERODROMO AERODROME CHART



AIRPORT DATA	
ARP:	18°34'14.81" N 068°21'58.27" W
RWY 08-26:	3100 x 45 M (10170 x 147 FT)
RWY 09-27:	3100 x 45 M (10170 x 147 FT)
TWY A:	23 M (75 FT)
TWY B:	25 M (82 FT)
TWY C:	10 M (33 FT)
TWY D:	25 M (82 FT)
TWY E:	23 M (75 FT)
TWY F:	23 M (75 FT)
TWY G:	23 M (75 FT)
TWY H:	10.5 M (34 FT)
TWY I:	25 M (82 FT)
TWY J:	25 M (82 FT)
TWY K:	25 M (82 FT)

CEILOMETERS
18°34'04.05" N
068°23'06.32" W

PNA VOR/DME
112.7 MHZ
18°34'02.13" N
068°22'59.93" W
ELEV. 11.0M (36FT) MSL

THR RWY 09
18°33'57.97" N
068°22'41.01" W
ELEV. 14.2 M (47FT) MSL

CHECK POINT VOR
18°33'59" N
068°22'09" W
ELEV. 13.1M (43FT) MSL

GENERAL AVIATION
18°33'50.45" N
068°22'34.98" W
ELEV. 12.9M (42FT) MSL

CARGO AREA
18°33'43.159" N
068°22'22.178" W
ELEV. 12.4M (41FT) MSL

TERMINAL B
18°33'43.506" N
068°22'05.103" W
ELEV. 10.3M (34FT) MSL

TERMINAL A
18°33'47.431" N
068°21'48.743" W
ELEV. 30.4M (100FT) MSL

VIP TERMINAL
18°33'50.691" N
068°21'29.873" W
ELEV. 8.5M (28FT) MSL

