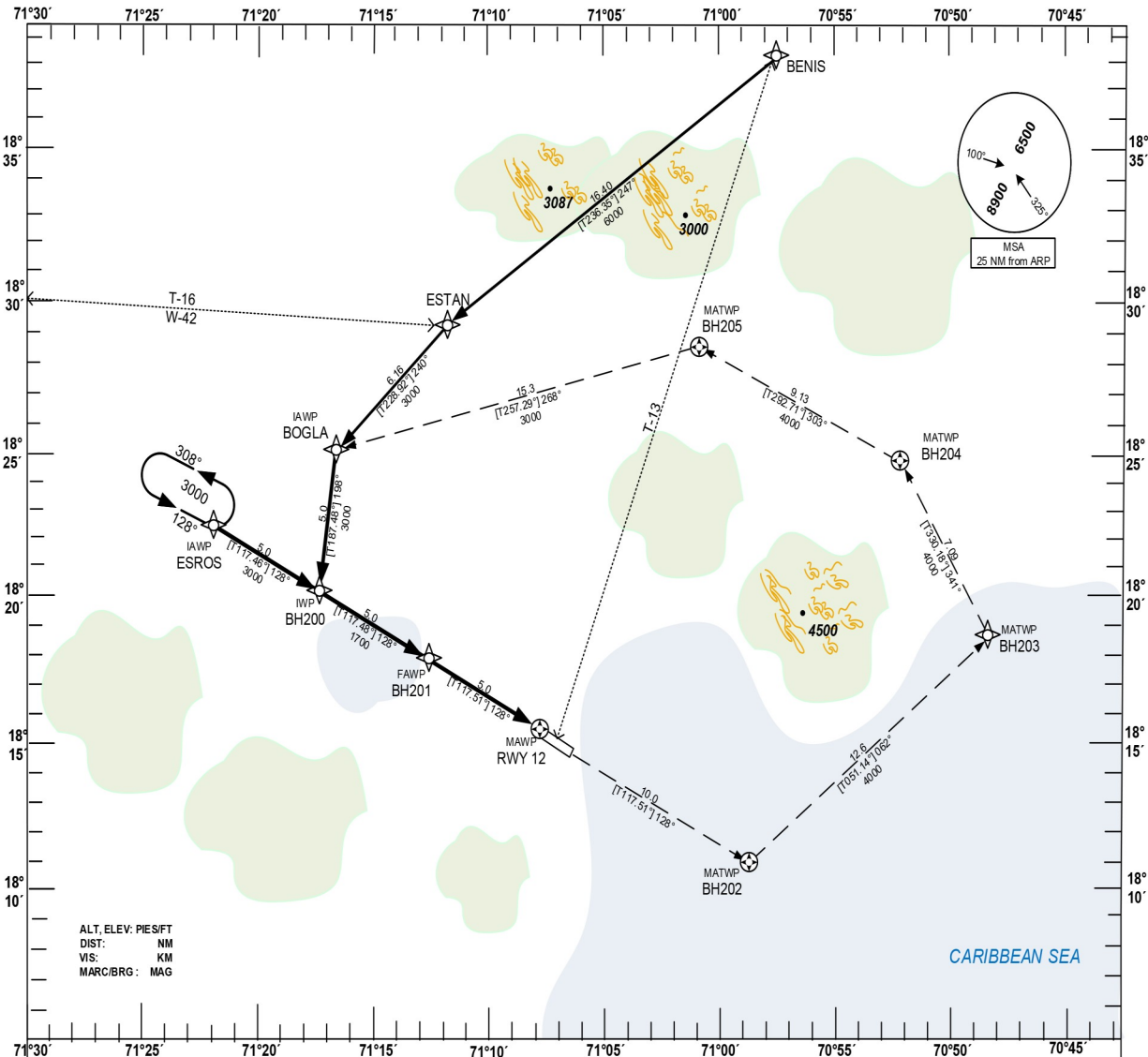


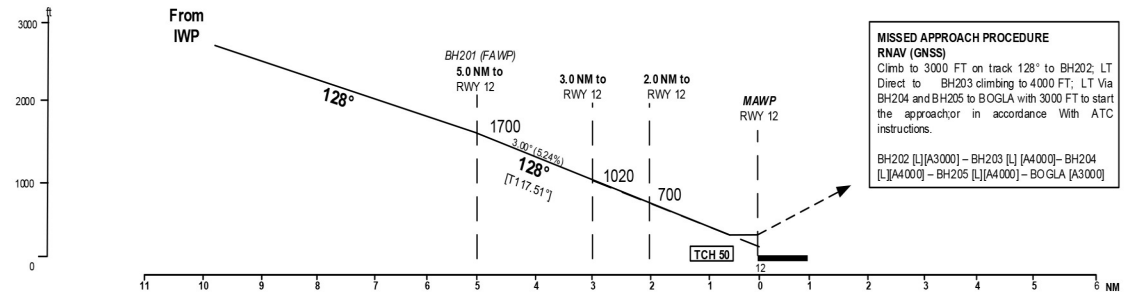
**INSTRUMENT  
APPROACH CHART  
(IAC)**

TRANSITION		Aerodrome	VAR	Threshold	SANTO DOMINGO ACC 124.300
ALT 17000	LEVEL FL 180	Elevation 12 ft	VAR 234	Elevation 12 ft	BARAHONA TWR 118.500

**BARAHONA  
MARIA MONTEZ INTL  
RNAV (GNSS) RWY 12**



ALT, ELEV: PIES/FT  
DIST: NM  
VIS: KM  
MARC/BRG: MAG



**MISSED APPROACH PROCEDURE  
RNAV (GNSS)**  
Climb to 3000 FT on track 128° to BH202; LT Direct to BH203 climbing to 4000 FT; LT Via BH204 and BH205 to BOGLA with 3000 FT to start the approach or in accordance with ATC instructions.  
BH202 [L][A3000] - BH203 [L][A4000] - BH204 [L][A4000] - BH205 [L][A4000] - BOGLA [A3000]

OCA/H Ceiling and Visibility Minimums

CAT	A	B	C	D
OCA (OCH)	384 (372)	384 (372)	384 (372)	384 (372)
CEILING	400	400	400	400
VISIBILITY	1.6	1.6	1.7	1.7

Timing not authorized for defining the MAWP

GS	kt	80	100	120	140	160	180
FAWP - RWY 12 (5.0 NM)	MIN:SEC	3:45	3:00	2:30	2:08	1:52	1:40
Rate of descent (5.24%)	ft / MIN	410	520	630	730	840	940

CHANGE: MSA VALUES.

**AEROPUERTO INT'L "MARIA MONTEZ"  
BARAHONA, R.D.  
MDBH RNAV (GNSS) RWY 12**

IDENT	LAT	LON
BENIS	18°38'17.64"N	070°57'21.40"W
ESTAN	18°29'09.71"N	071°11'43.14"W
BOGLA (IAWP)	18°25'05.80"N	071°16'36.22"W
ESROS (IWP)	18°22'26.11"N	071°21'57.15"W
BH200 (IWP)	18°20'07.18"N	071°17'17.30"W
BH201 (FAWP)	18°17'48.14"N	071°12'37.57"W
RWY12 (MAWP)	18°15'28.99"N	071°07'57.97"W
BH202 (MATWP)	18°10'50.53"N	070°58'39.04"W
BH203 (MATWP)	18°18'46.74"N	070°48'19.90"W
BH204 (MATWP)	18°24'57.18"N	070°52'02.40"W
BH205 (MATWP)	18°28'29.25"N	071°00'54.07"W