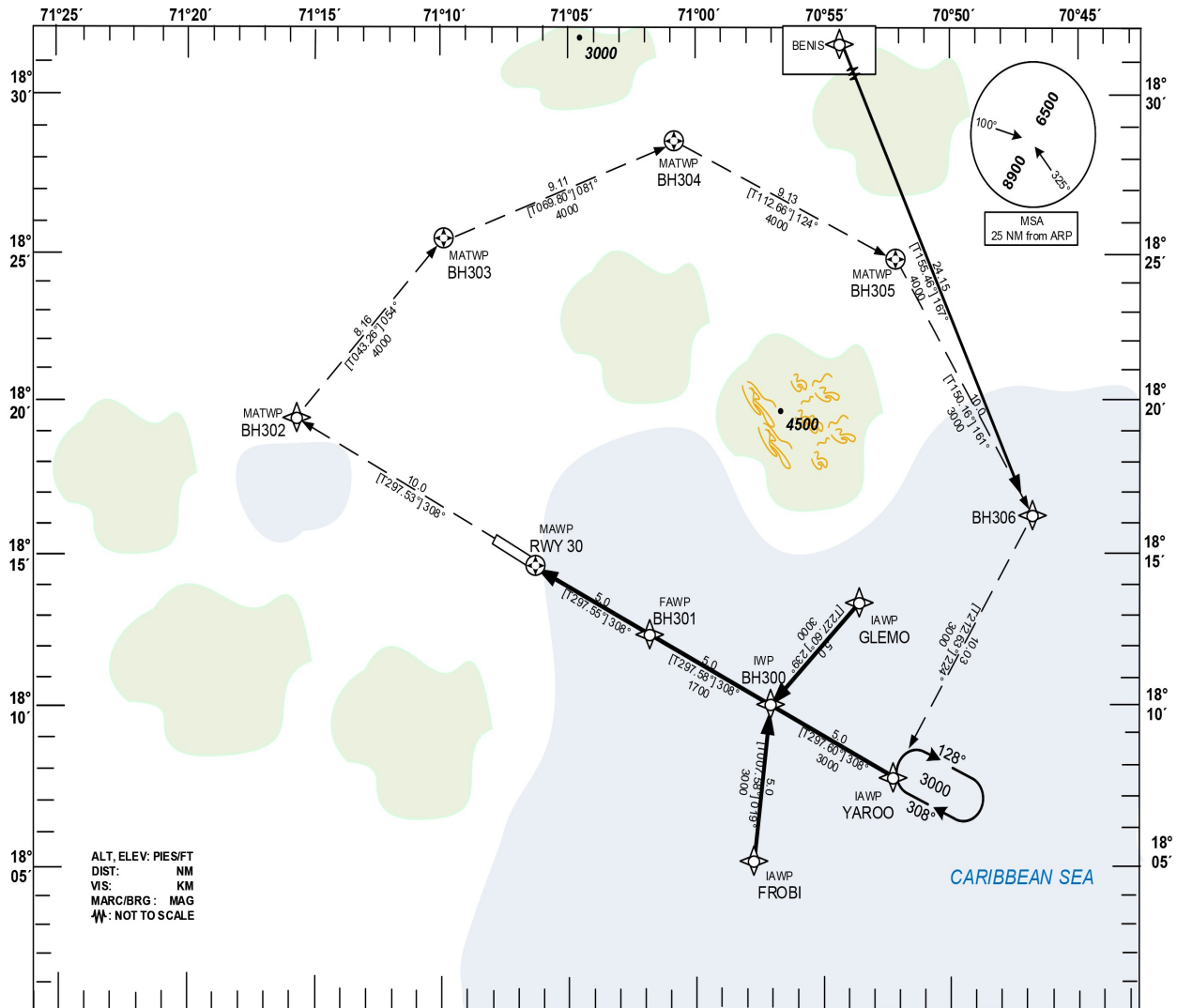


**INSTRUMENT
APPROACH CHART
(IAC)**

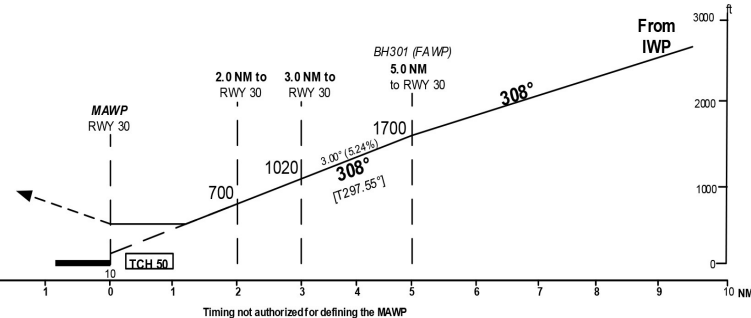
TRANSITION		Aerodrome	VAR	Threshold	SANTO DOMINGO ACC 124.300 BARAHONA TWR 118.500
ALT	LEVEL	Elevation	FL	Elevation	
17000	FL 180	12 ft		10 ft	

**BARAHONA
MARIA MONTEZ INTL
RNAV (GNSS) RWY 30**



ALT. ELEV: PIES/FT
DIST: NM
VIS: KM
MARC/BRG: MAG
M: NOT TO SCALE

MISSED APPROACH PROCEDURE RNAV (GNSS)
Climb to 3000 FT on track 308° to BH302; RT Direct to BH303 climbing to 4000 FT; RT Via BH304 and BH305 with 4000 FT; RT Direct to BH306 Descending to 3000 FT; RT to YAROO and Hold; or in accordance With ATC instructions.
BH302 [R][A3000] - BH303 [R][A4000] - BH304 [R][A4000] - BH305 [R][A4000] - BH306 [R][A3000] - YAROO [H][A3000]



CAT	A	B	C	D
OCA (OCH)	487 (475)	487 (475)	487 (475)	487 (475)
CEILING	500	500	500	500
VISIBILITY	1.6	1.6	2.2	2.2

GS	kt	80	100	120	140	160	180
FAWP - RWY 30 (5.0 NM)	MIN:SEC	3:45	3:00	2:30	2:08	1:52	1:40
Rate of descent (5.24%)	ft / MIN	410	520	630	730	840	940

CHANGE MSA VALUES.

**AEROPUERTO INT'L "MARIA MONTEZ"
BARAHONA, R.D.
MDBH RNAV (GNSS) RWY 30**

IDENT	LAT	LON
BENIS	18°38'17.64"N	070°57'21.40"W
FROBI (IAWP)	18°05'06.68"N	070°57'50.16"W
GLEMO (IAWP)	18°13'28.37"N	070°53'15.95"W
YAROO (IAWP)	18°07'45.75"N	070°52'29.41"W
BH300 (IWP)	18°10'05.24"N	070°57'08.62"W
BH301 (FAWP)	18°12'24.62"N	071°01'47.95"W
RWY30 (MAWP)	18°14'43.89"N	071°06'27.41"W
BH302 (MATWP)	18°19'22.08"N	071°15'46.70"W
BH303 (MATWP)	18°25'20.01"N	071°09'53.78"W
BH304 (MATWP)	18°28'29.25"N	071°00'54.07"W
BH305 (MATWP)	18°24'57.18"N	070°52'02.40"W
BH306	18°16'14.61"N	070°46'48.67"W