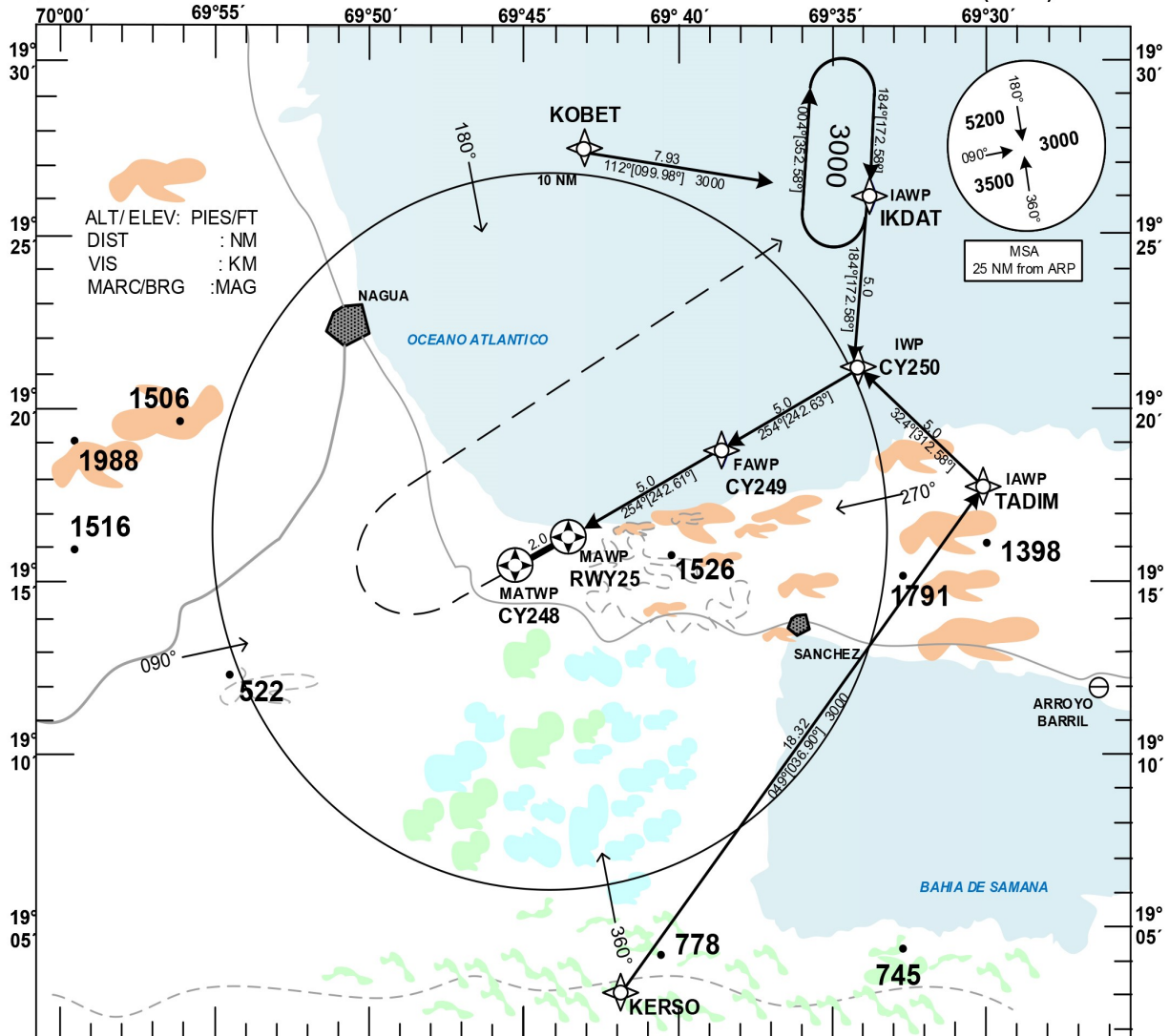


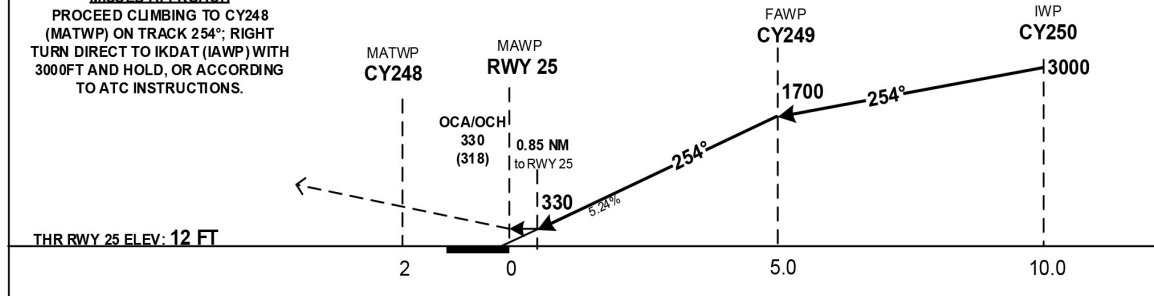
**INSTRUMENT
APPROACH CHART
(IAC)**

TRANSITION		Aerodrome Elevation 12 ft	VAR M 3.1	Threshold Elevation 12 ft	SANTO DOMINGO CIBAO EL CATEY	ACC 124.300 APP 119.000 TWR 118.350
ALT 17000	LEVEL FL 180					

**SAMANA
EL CATEY INTL
JUAN BOSCH
RNAV (GNSS) RWY 25**



MISSED APPROACH
PROCEED CLIMBING TO CY248 (MATWP) ON TRACK 254°; RIGHT TURN DIRECT TO IKDAT (IAWP) WITH 3000FT AND HOLD, OR ACCORDING TO ATC INSTRUCTIONS.



OCA/H, CEILING AND VISIBILITY MINIMUMS				
CATEGORY	A	B	C	D
STRAIGHT-IN RWY 25	330(318) 500 2.0		330(318) 500 3.6	
CIRCLING RWY 07	1000(988) 1000 2.8		2100 (2088) 2100 4.6	

CHANGE: NEW PROCEDURE.

**AEROPUERTO INTL "EL CATEY" JUAN BOSCH
SAMANA, R.D.
MDCY RNAV (GNSS) RWY 25**

IDENT	LAT	LON
KOBET	19°27'30.00"N	069°43'04.00"W
KERSO	19°03'02.75"N	069°41'51.30"W
IKDAT (IAWP)	19°26'07.10"N	069°34'48.28"W
TADIM (IAWP)	19°17'44.67"N	069°30'13.74"W
CY250 (IWP)	19°21'08.47"N	069°34'07.28"W
CY249 (FAWP)	19°18'49.97"N	069°38'48.98"W
CY248 (MATWP)	19°15'35.87"N	069°45'23.14"W
RWY25 (MAWP)	19°16'31.35"N	069°43'30.55"W