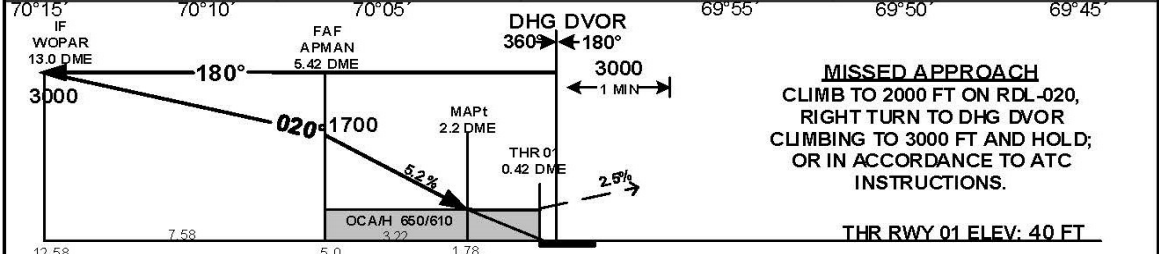
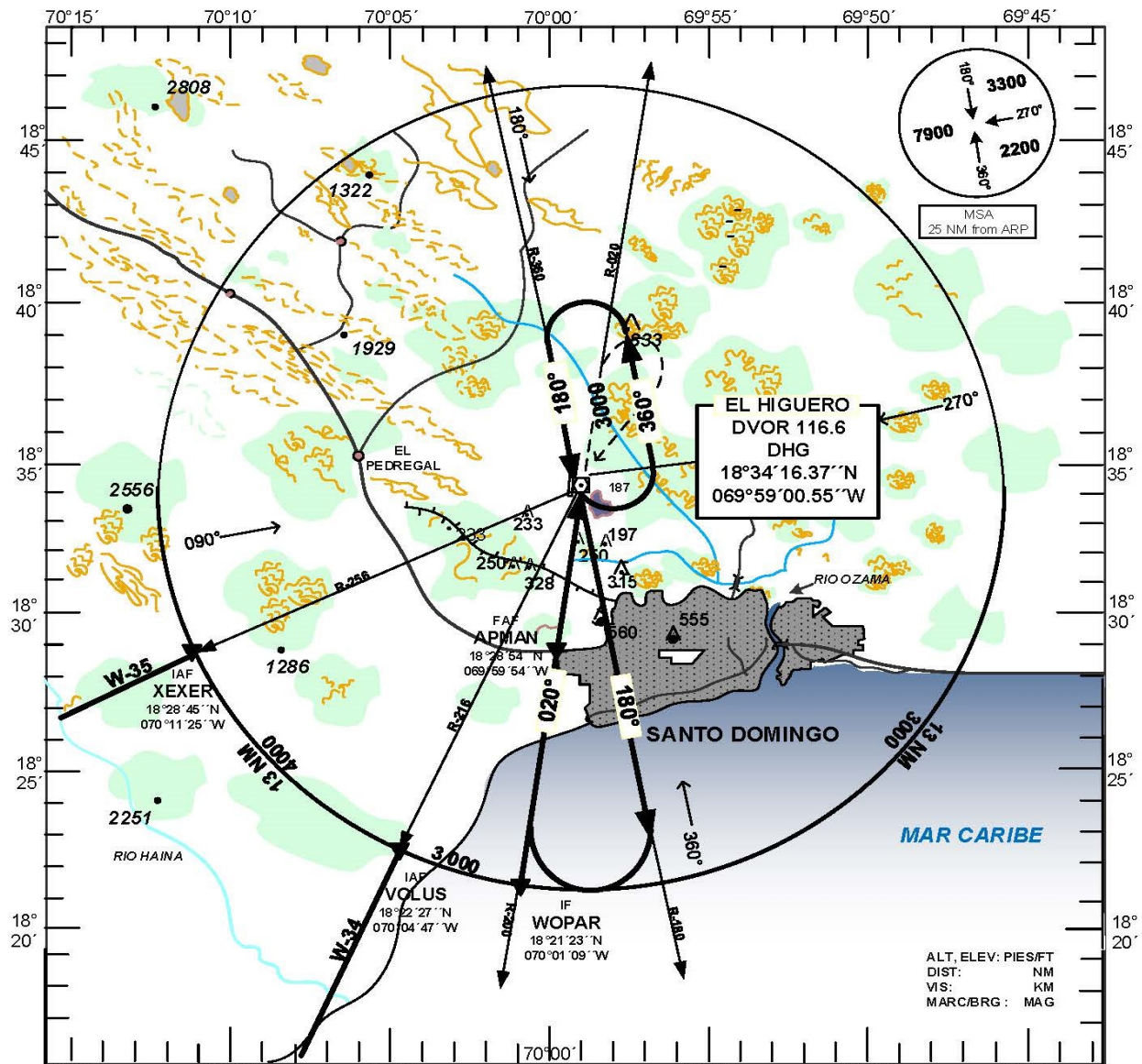


**INSTRUMENT
APPROACH CHART
(IAC)**

| TRANSITION | | Aero drome | VAR | Threshold | SANTO DOMINGO |
|------------|--------|------------|-----|-----------|--------------------------|
| ALT | LEVEL | Elevation | ↑ | Elevation | ACC 124.300 |
| 17.000 | FL 180 | 81 ft | WST | 40 ft | 124.600 |
| | | | | | LAS AMERICAS APP 119.300 |
| | | | | | EL HIGUERO TWR 118.900 |

**SANTO DOMINGO
EL HIGUERO INTL
JOAQUIN BALAGUER
VOR/DME RWY 01**



MISSED APPROACH
CLIMB TO 2000 FT ON RDL-020,
RIGHT TURN TO DHG DVOR
CLIMBING TO 3000 FT AND HOLD;
OR IN ACCORDANCE TO ATC
INSTRUCTIONS.

THR RWY 01 ELEV: 40 FT

| OCA/H, CEILING AND VISIBILITY MINIMUMS | | | | |
|--|----------------------|---|----------------------|----------------------|
| CATEGORY | A | B | C | D |
| STRAIGHT-IN RWY 01 | 650 (610) 700 2.4 | | 650 (610) 700 2.8 | 650 (610) 700 3.2 |
| CIRCLING RWY 19 | 1540 (1440) 1500 2.8 | | 1540 (1440) 1500 3.7 | 1540 (1440) 1500 4.6 |

CHANGE: MAPT LOCATION.

| MDJB VOR/DME RWY 01 PROCEDURE DATA | | | | |
|---|--------------------------------|--|-----------------|------------------------------------|
| PUNTO DE REF/ TERMINAL FIX | GEO. COORD | MARCACION/ BEARING (TRUE/MAG) | DIST. NM | GRAD. DESC. / SLOPE |
| IAF: XEXER | 18°28'45.03''N 070°11'24.31''W | 13 DME ARC | 12.71 | NIL |
| IAF: VOLUS | 18°22'26.59''N 070°04'47.16''W | 13 DME ARC | 3.63 | NIL |
| IF: WOPAR | 18°21'22.94''N 070°01'08.84''W | 008.99°/020° | 7.58 | NIL |
| FAF: APMAN (5.42 DME DHG) | 18°28'53.91''N 069°59'54.07''W | 008.99°/020° | 3.22 | 5.24 % |
| MAPT: 2.2 DME DHG | 18°32'05.48''N 069°59'22.26''W | 008.99°/020° | 1.78 to THR 01 | NIL |
| TP | NIL | NIL | NIL | NIL |
| MAHF: DHG VOR/DME | 18°34'16.37''N 069°59'00.55''W | OB: 348.99°/000° IB: 168.99°/180° | NIL | NIL |