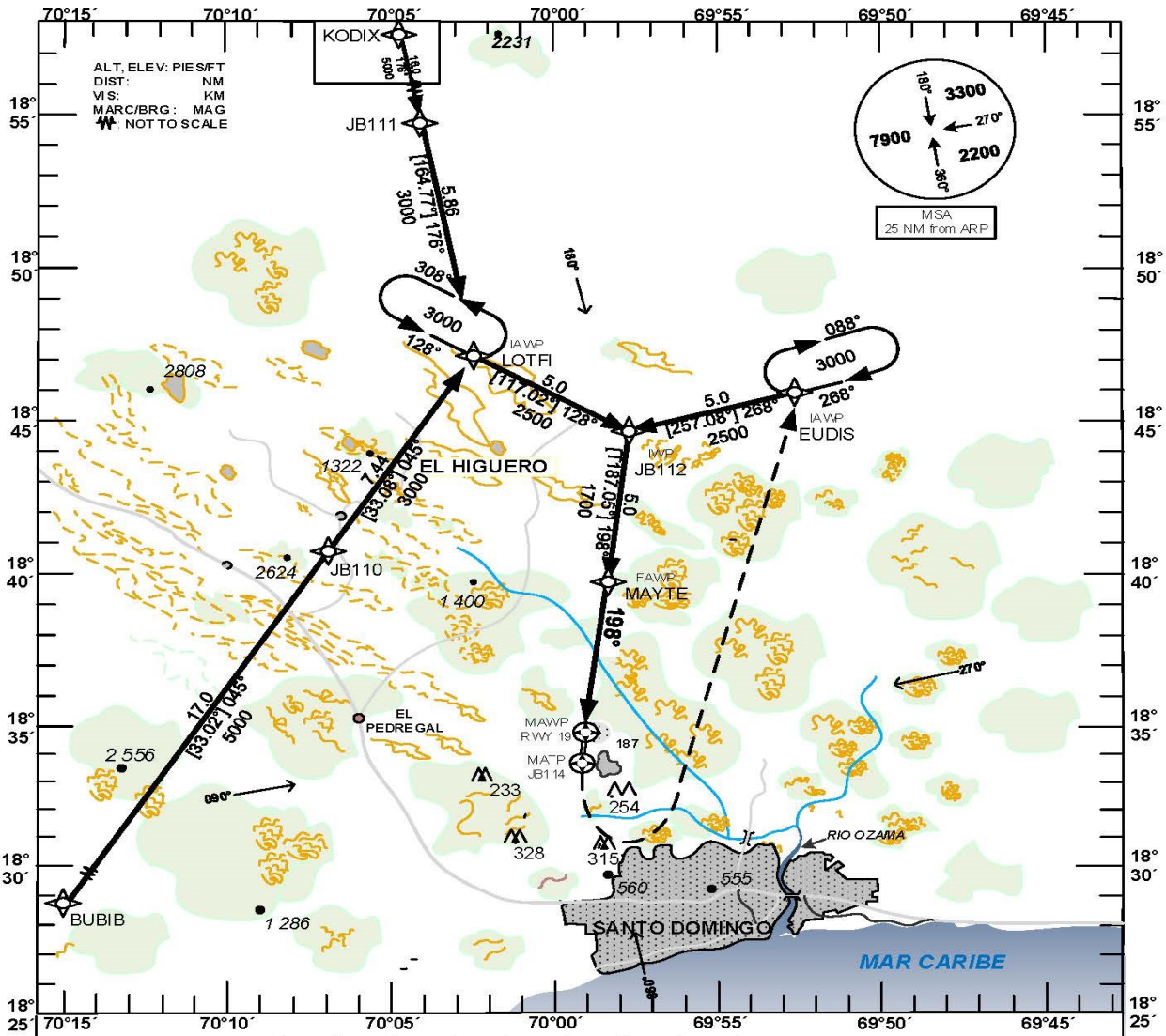


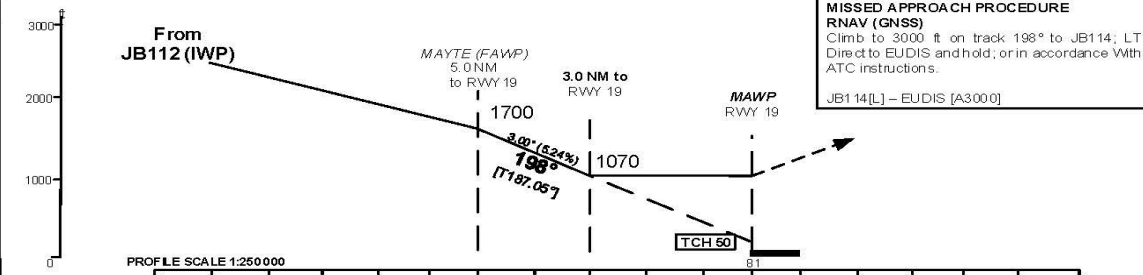
**INSTRUMENT
APPROACH CHART
(IAC)**

TRANSITION		Aerodrome	VAR	Threshold	SANTO DOMINGO	ACC 124.300
ALT 17000	LEVEL FL 180	Elevation 81 ft		Elevation 81 ft	LAS AMERICAS EL HIGUERO	124.600 APP 119.300 TWR 118.900

**SANTO DOMINGO
EL HIGUERO INTL
JOAQUIN BALAGUER
RNAV (GNSS) RWY 19**



DIST RWY 19	5	4	3	2	1
ALTITUDE	1700	1380	1070		



**MISSED APPROACH PROCEDURE
RNAV (GNSS)**
Climb to 3000 ft on track 198° to JB114; LT Direct to EUDIS and hold; or in accordance with ATC instructions.
JB114[L] – EUDIS [A3000]

OCA/H Ceiling and Visibility Minimums

CAT	A	B	C	D
OCA (OCH)	1070 (989)	1070 (989)	1070 (989)	1070 (989)
CEILING	1000	1000	1000	1000
VISIBILITY	2.4	2.4	2.8	3.2

Timing not authorized for defining the MAWP

GS	kt	80	100	120	140	160	180
FAWP – RWY19 (5.0 NM)	MIN:SEC	3:45	3:00	2:30	2:08	1:52	1:40
Rate of descent (5.24%)	ft / MIN	410	520	630	730	840	940

CHANGE: BUBIB-JB110-LOTFI SEGMENTS.

AEROPUERTO INT'L " JOAQUIN BALAGUER" HIGUERO, R.D. MDJB RNAV (GNSS) RWY 19		
IDENT	LAT	LON
KODIX	19°08'12.00"N	070°08'33.00"W
BUBIB	18°26'27.71"N	070°16'31.41"W
JB110	18°40'46.05"N	070°06'45.93"W
JB111	18°52'42.26"N	070°04'06.37"W
EUDIS (IAWP)	18°45'52.20"N	069°52'39.28"W
LOTFI (IAWP)	18°47'01.68"N	070°02'29.01"W
JB112 (IWP)	18°44'44.78"N	069°57'47.40"W
MAYTE (FAWP)	18°39'45.89"N	069°58'26.22"W
RWY 19 (MAWP)	18°34'47.01"N	069°59'05.20"W
JB114 (MATP)	18°33'47.22"N	069°59'12.75"W