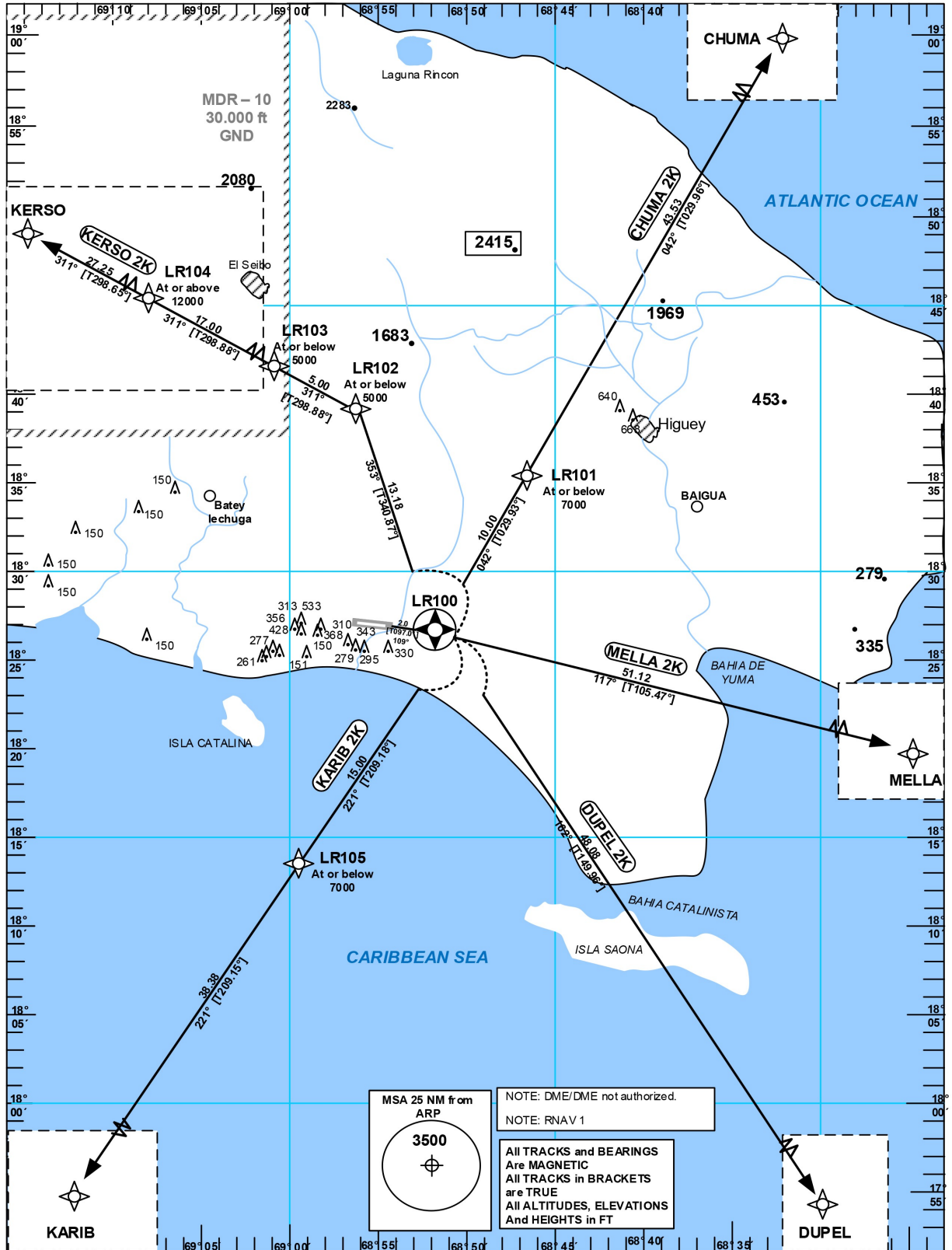


STANDARD DEPARTURE
CHART - INSTRUMENT
(SID)

TRANSITION		Aerodrome	VAR
ALT	LEVEL	Elevation	
17000	FL180	240 ft	
Santo Domingo ACC 124.300			
Las Americas APP 119.300			
La Romana TWR 118.600			

LA ROMANA
CASA DE CAMPO INTL
RNAV (GNSS) RWY 11



CHANGE: RNAV 1 Note.

STANDARD DEPARTURE
ROUTES-INSTRUMENT
(SID)

LA ROMANA
CASA DE CAMPO INTL
RNAV (GNSS) RWY 11

Designator	Route	After Take-Off		Remarks	
		Climb to	Contact	Points	Coordinates
1	2	3	4	5	6
KERSO 2K	KERSO TWO KILO Climb on track 109° to LR100; LT on track 353° to LR102; LT on track 311° via LR103 and LR104 to KERSO. [A500+] — LR100 [L] — LR102 [A5000-;L] — LR103 [A5000-] — LR104 [A12000+] — KERSO.	5000	Santo Domingo ACC 124.300 ACC 124.600	LR100 LR102 LR103 LR104 KERSO	18°26'48.38"N 068°51'45.62"W 18°39'18.18"N 068°56'18.48"W 18°41'43.58"N 069°00'55.21"W 18°49'57.48"N 069°16'36.85"W 19°03'02.75"N 069°41'51.30"W
CHUMA 2K	CHUMA TWO KILO Climb on track 109° to LR100; LT on track 042° via LR101 to CHUMA. [A500+] — LR100 [L] — LR101 [A7000-;R] — CHUMA [A7000+].	7000		LR100 LR101 CHUMA	18°26'48.38"N 068°51'45.62"W 18°35'30.33"N 068°46'30.45"W 19°13'20.40"N 068°23'32.40"W
MELLA 2K	MELLA TWO KILO Climb on track 109° to LR100; RT on track 117° to MELLA. [A500+] — LR100 [R] — MELLA.	Continuous		LR100 MELLA	18°26'48.38"N 068°51'45.62"W 18°13'00.00"N 068°00'00.00"W
DUPEL 2K	DUPEL TWO KILO Climb on track 109° to LR100; RT on track 162° to DUPEL. [A500+] — LR100 [R] — DUPEL.	Continuous		LR100 DUPEL	18°26'48.38"N 068°51'45.62"W 17°44'59.67"N 068°26'32.42"W
KARIB 2K	KARIB TWO KILO Climb on track 109° to LR100; RT on track 221° via LR105 to KARIB. [A500+] — LR100 [R] — LR105 [A7000-] - KARIB [A7000+].	7000		LR100 LR105 KARIB	18°26'48.38"N 068°51'45.62"W 18°13'39.35"N 068°59'26.62"W 17°39'59.12"N 069°19'01.18"W

DME/DME NOT AUTHORIZED.