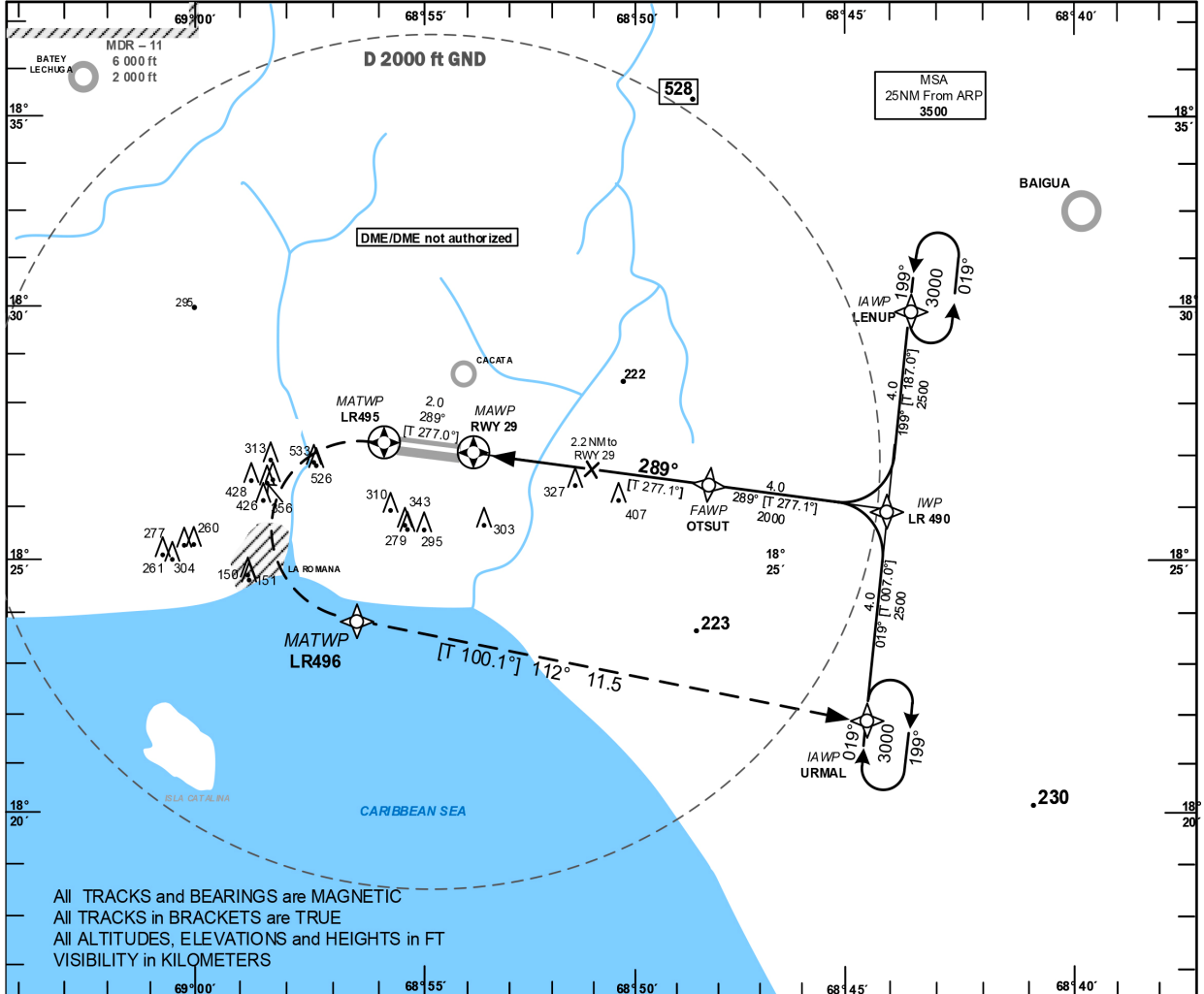


**INSTRUMENT  
APPROACH CHART  
(IAC)**

TRANSITION		Aerodrome	VAR	Threshold	SANTO DOMINGO	
ALT	LEVEL	Elevation		Elevation	ACC	124.300
17000	FL 180	240 ft	133°	217 ft		124.600
					APP	119.300
					TWR	118.600

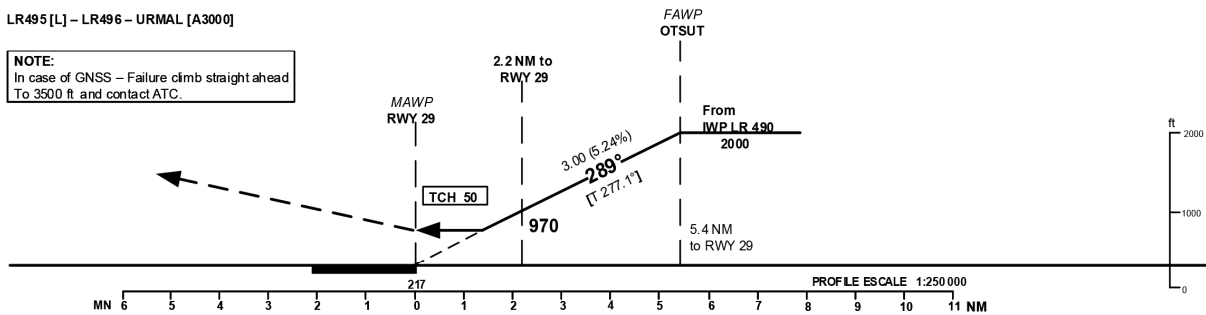
**LA ROMANA  
CASA DE CAMPO INTL  
RNAV(GNSS) RWY 29**



**MISSED APPROACH PROCEDURE**  
RNAV (GNSS)  
Climb on track 289° to LR495; LT via LR 496  
on track 112° to URMAL to 3000 or in  
accordance with ATC instructions.

LR495 [L] – LR496 – URMAL [A3000]

**NOTE:**  
In case of GNSS – Failure climb straight ahead  
To 3500 ft and contact ATC.



OCA/H Ceiling and Visibility Minimums

CAT	A	B	C	D
OCA (OCH)	670 (453)	670 (453)	670 (453)	670 (453)
CEILING	500	500	500	500
VISIBILITY	1.6	1.6	2.1	2.1

Timing not authorized for defining the MAWP.

GS	kt	80	100	120	140	160	180
OTSUT-RWY29 (5.4 NM)	MIN:SEC	4:03	3:14	2:42	2:19	2:02	1:48
Rate of descent (5.24%)	Ft/MIN	420	530	640	740	850	960

CHANGE: CTR vertical limits.

*Intencionalmente en Blanco*  
*Intentionally Left Blanc*