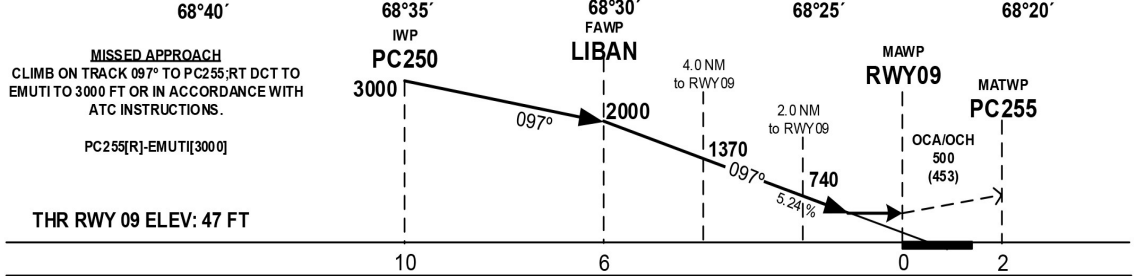
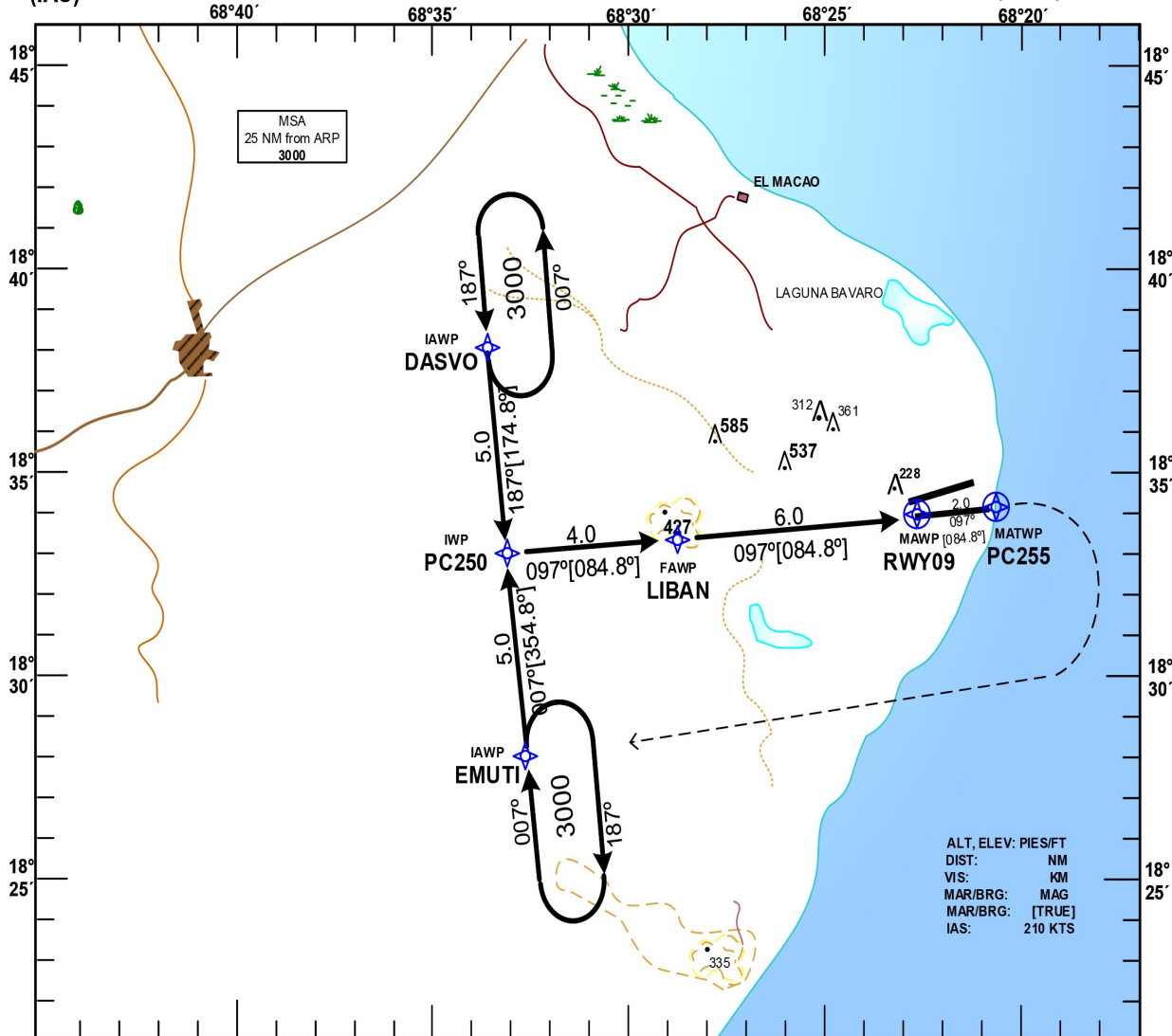


**INSTRUMENT
APPROACH CHART
(IAC)**

TRANSITION		Aerodrome	VAR	Threshold	SANTO DOMINGO
ALT	LEVEL	Elevation		Elevation	ACC 124.300
17000	FL 180	47 ft	VAR 133	47 ft	124.600
					APP 119.750
					TWR 118.800

**HIGÜEY
PUNTA CANA INTL
RNAV (GNSS) RWY 09**



OCA/H, Ceiling and Visibility Minimums

CAT	A	B	C	D
OCA(OCH)	500 (453)	500 (453)	500 (453)	500 (453)
CEILING	500	500	500	500
VISIBILITY	1.2	1.2	1.9	1.9

Timing not authorized for defining the MAPt.

GS	kt	80	100	120	140	160	180
LIBAN-RWY 09 (6.0NM)	MIN:SEC	4:30	3:36	3:00	2:34	2:15	2:00
Rate of descent (5.24%)	ft/MIN	420	530	640	740	850	960

CHANGE: CEILING AND VISIBILITY MINIMUMS.

AEROPUERTO INT'L "PUNTA CANA", HIGÜEY, R.D. "PUNTA CANA" INT'L AIRPORT, HIGÜEY, R.D. MDPC RNAV (GNSS) RWY 09		
IDENT	LAT	LOG
DASVO (IAWP)	18°38'03.28" N	068°33'37.53" W
EMUTI (IAWP)	18°28'03.41" N	068°32'40.30" W
PC250 (IWP)	18°33'03.35" N	068°33'08.90" W
LIBAN (FAWP)	18°33'25.31" N	068°28'57.34" W
RWY 09 (MAWP)	18°33'57.97" N	068°22'41.01" W
PC255 (MATWP)	18°34'08.84" N	068°20'35.21" W