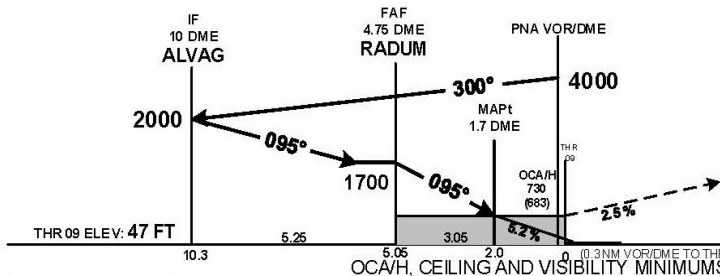
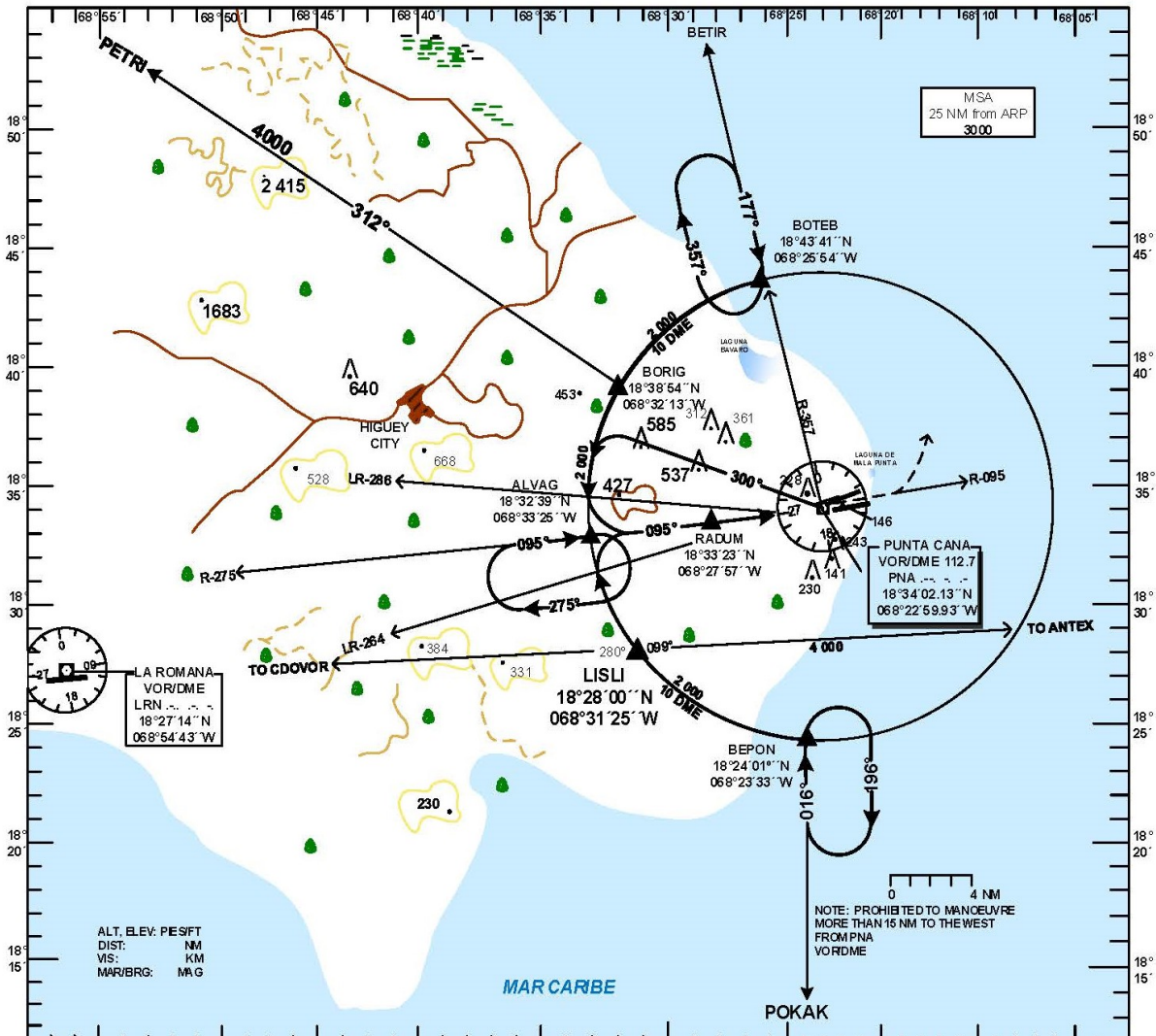


**INSTRUMENT  
APPROACH CHART  
(IAC)**

TRANSITION		Aerodrome	VAR	Threshold Elevation 47 ft	SANTO DOMINGO	ACC 124.300
ALT 17000	LEVEL FL 180	Elevation 47 ft			PUNTA CANA	APP 119.750

**HIGUEY  
PUNTA CANA INTL  
VOR/DME RWY 09**



**MISSED APPROACH**  
CLIMB TO 1500 FT ON PNA VOR/DME R-095,  
THEN LEFT TURN TO BOTEV VIA PNA R-367,  
WITH 2000 FT, IN ACCORDANCE TO  
ATC INSTRUCTIONS.

CAT	STRAIGHT RWY 09		CIRCLING RWY 27		GS (KTS)	80	100	120	140	160	180	
	OCA/H	CEILING	OCA/H	CEILING								VIS
A	730	1.6	830 (783)	800	2.8	2:17	1:50	1:32	1:18	1:08	1:01	
B	(683)					3:47	3:02	2:32	2:10	1:53	1:41	
C		3.6	980 (933)	1 000	4.6	424	530	636	742	848	954	
D	700					DIST (DME) FAF - MAPt		FAF	4	3	2	MAPt
						ALTITUDE		1700	1470	1150	830	730

CHANGE: MAPt LOCATION.

<b>MDPC VOR/DME RWY 09 PROCEDURE DATA</b>				
<b>PUNTO DE REF/ TERMINAL FIX</b>	<b>GEO. COORD</b>	<b>MARCACION BEARING (TRUE/MAG)</b>	<b>DIST. NM</b>	<b>GRAD.DESC/ SLOPE</b>
IAF: BOTE B	18°43'41"N 068°25'54"W	10 DME ARC	14.31	NIL
IAF: BEPON	18°24'01"N 068°23'33"W	10 DME ARC	13.79	NIL
IAF: BORIG	18° 38' 54"N 068°32'13"W	10 DME ARC	6.46	NIL
IAF: LISLI	18° 28' 00"N 068°31'25"W	10 DME ARC	5.06	NIL
IF: ALVAG	18°32'38.84"N 068°33'25.42"W	082.08°/095°	5.25	5.2%
FAF: RADUM	18°33'22.64"N 068°27'57.06"W	082.08°/095°	3.05 to MAPT	5.2%
MAPT: .7 DME PNA	18°33'48.1"N 068°24'46.27"W	082.08°/095°	2.0 TO THR 09	NIL