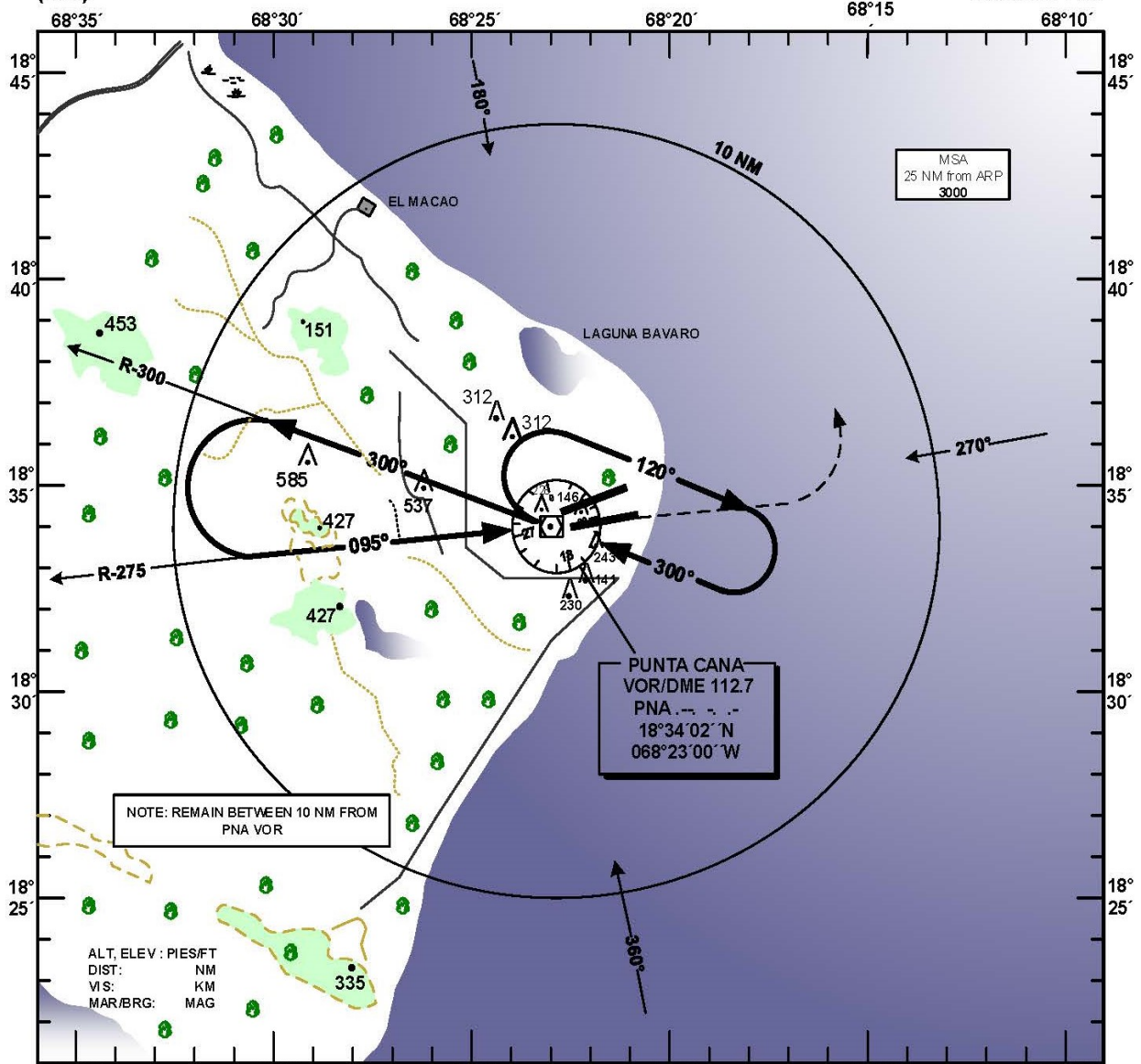


**INSTRUMENT  
APPROACH CHART  
(IAC)**

TRANSITION		Aerodrome	VAR	Threshold	SANTO DOMINGO	ACC 124.300
ALT 17000	LEVEL FL 180	Elevation 47 ft	$\swarrow$ 32	Elevation 47 ft	PUNTA CANA	124.600
					PUNTA CANA	APP 119.750
					PUNTA CANA	TWR 118.800

**HIGÜEY  
PUNTA CANA INTL  
VOR RWY 09**

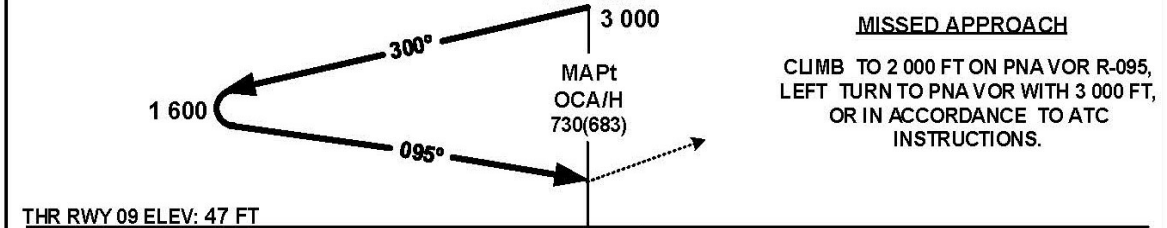


NOTE: REMAIN BETWEEN 10 NM FROM PNA VOR

ALT, ELEV: PIESFT  
DIST: NM  
VIS: KM  
MAR/BRG: MAG

PUNTA CANA  
VOR/DME 112.7  
PNA ---  
18°34'02" N  
068°23'00" W

68°35' 68°30' 68°25' 68°20' 68°15' 68°10'



**MISSED APPROACH**  
CLIMB TO 2 000 FT ON PNA VOR R-095,  
LEFT TURN TO PNA VOR WITH 3 000 FT,  
OR IN ACCORDANCE TO ATC  
INSTRUCTIONS.

OCA/H, CEILING AND VISIBILITY MINIMUMS

CATEGORY	A	B	C	D
STRAIGHT-IN RWY 09	730 (683) 700 1.6		730 (683) 700 3.6	
CIRCLING RWY 27		830 (783) 800 2.8	980 (933) 1 000 4.6	

LAST CHANGES: TITLE FORMAT, MSA VALUES