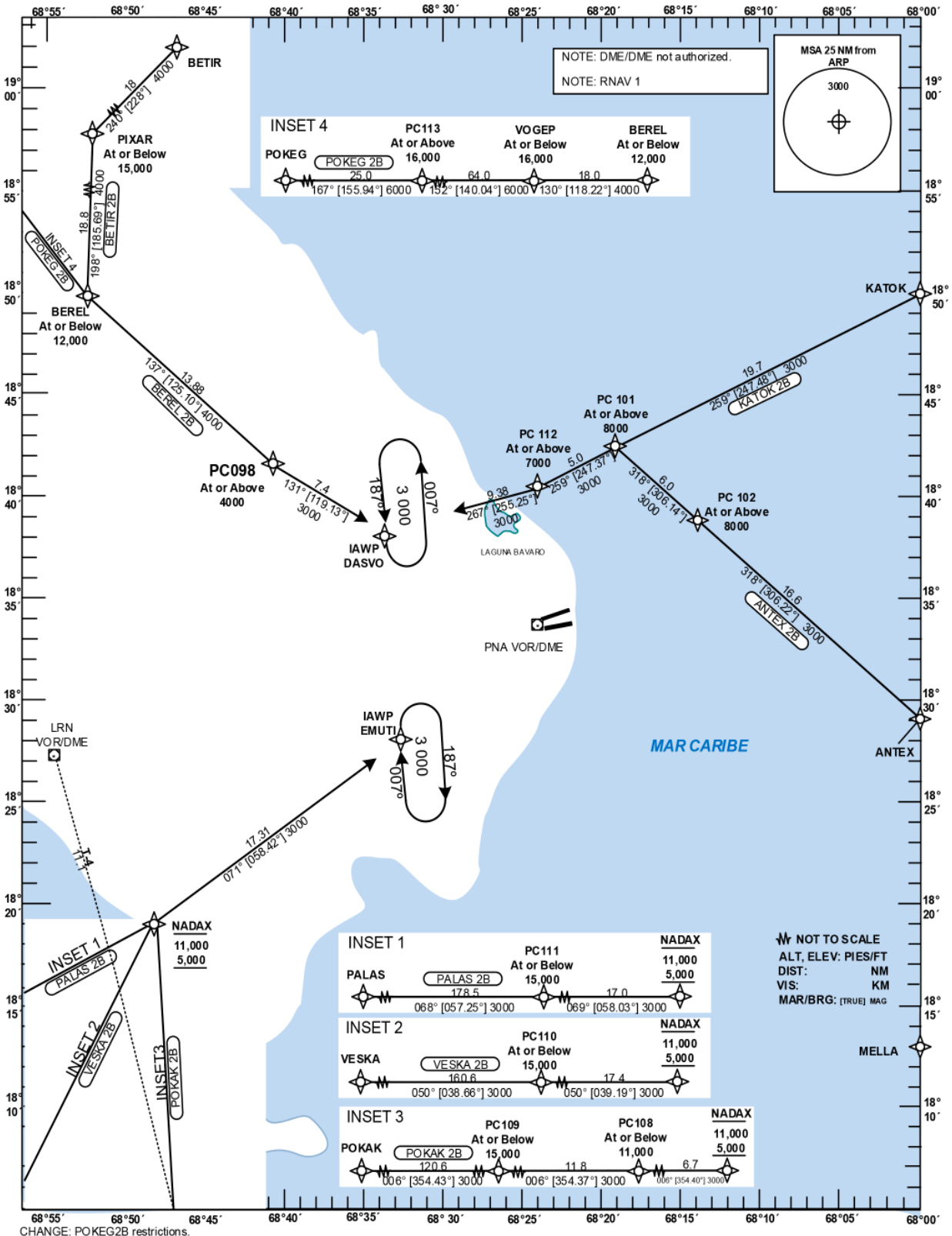


**STANDARD INSTRUMENT ARRIVAL (STAR)**

TRANSITION		Aerodrome Elevation	VAR	SANTO DOMINGO	ACC 124.300
ALT 17000	LEVEL FL 180	47 ft	VAR	PUNTA CANA	APP 119.750
				PUNTA CANA	TWR 118.800

**HIGUEY PUNTA CANA INTL RNAV (GNSS) RWY 09**



STANDARD ARRIVAL ROUTES-INSTRUMENT (STAR) PUNTA CANA HIGUEY INT'L RNAV (GNSS) RWY 09

Designator	Identification Significant Points	Constraints	MAG (True) Track	Dist NM	MNM IFR Cruising Level	Coordinates
<b>BETIR 2B</b>	<b>BETIR TWO BRAVO</b>					
	Δ BETIR	A16000-;K250-	240 (228)	18	4000	19°20'35"N 068°36'16"W
	Δ PIXAR	A15000-;K230-	198(185.69)	18.8	4000	19°08'30"N 068°50'25"W
	Δ BEREL	A12000-;K220-	137(125.10)	13.88	4000	18°49'42.00"N 068°52'23.00"W
	Δ PC098	A4000+;K220-	131(119.13)	7.4	3000	18°41'40.23"N 068°40'25.69"W
	Δ DASVO	A3000+;K210-	-	-	-	18°38'03.28"N 068°33'37.53"W
<b>BEREL 2B</b>	<b>BEREL TWO BRAVO</b>					
	Δ BEREL	A12000-;K220-	137(125.10)	13.88	4000	18°49'42.00"N 068°52'23.00"W
	Δ PC098	A4000+;K220-	131(119.13)	7.4	3000	18°41'40.23"N 068°40'25.69"W
	Δ DASVO	A3000+;K210-	-	-	-	18°38'03.28"N 068°33'37.53"W
<b>POKEG 2B</b>	<b>POKEG TWO BRAVO</b>					
	Δ POKEG	A16000+	167(155.94)	25	6000	20°10'30.00"N 070°03'18.00"W
	Δ PC113	A16000+	152(140.04)	63.97	6000	19°47'34.85"N 069°52'29.48"W
	Δ VOGEP	A16000-;K270-	130(118.22)	18.04	4000	18°58'16.55"N 069°09'08.52"W
	Δ BEREL	A12000-;K220-	137(125.10)	13.88	4000	18°49'42.00"N 068°52'23.00"W
	Δ PC098	A4000+;K220-	131(119.13)	7.4	3000	18°41'40.23"N 068°40'25.69"W
	Δ DASVO	A3000+;K210-	-	-	-	18°38'03.28"N 068°33'37.53"W
<b>KATOK 2B</b>	<b>KATOK TWO BRAVO</b>					
	Δ KATOK	A8000+;K230-	259(247.48)	19.7	3000	18°50'00"N 068°00'00"W
	Δ PC101	A8000+;K210-	259(247.37)	5	3000	18°42'23.33"N 068°19'12.74"W
	Δ PC112	A7000+;K210-	267(255.25)	9.38	3000	18°40'27.38"N 068°24'04.41"W
	Δ DASVO	A3000+;K210-	-	-	-	18°38'03.28"N 068°33'37.53"W
<b>ANTEX 2B</b>	<b>ANTEX TWO BRAVO</b>					
	Δ ANTEX	A8000+;K230-	318(306.22)	16.6	3000	18°29'00"N 068°00'00"W
	Δ PC102	A8000+;K230-	318(306.14)	6	3000	18°38'49.82"N 068°14'05.55"W
	Δ PC101	A8000+;K210-	259(247.37)	5	3000	18°42'23.33"N 068°19'12.74"W
	Δ PC112	A7000+;K210-	267(255.25)	9.38	3000	18°40'27.38"N 068°24'04.41"W
	Δ DASVO	A3000+;K210-	-	-	-	18°38'03.28"N 068°33'37.53"W
<b>POKAK 2B</b>	<b>POKAK TWO BRAVO</b>					
	Δ POKAK	A16000+	006(354.43)	120.57	3000	16°00'00"N 068°34'00"W
	Δ PC109	A15000-;K230-	006(354.37)	11.8	3000	18°00'28.91"N 068°46'16.76"W
	Δ PC108	A11000-;K210-	006(354.40)	6.7	3000	18°12'14.19"N 068°47'29.56"W
	Δ NADAX	A11000-/5000+;K210-	071(058.42)	17.31	3000	18°18'58"N 068°48'11"W
	Δ EMUTI	A3000+;K210-	-	-	-	18°28'03.41"N 068°32'40.30"W
<b>VESKA 2B</b>	<b>VESKA TWO BRAVO</b>					
	Δ VESKA	A16000+	050(038.66)	160.57	3000	16°00'00"N 070°45'00"W
	Δ PC110	A15000-;K230-	050(039.19)	17.4	3000	18°05'26.96"N 068°59'43.49"W
	Δ NADAX	A11000-/5000+;K210-	071(058.42)	17.31	3000	18°18'58"N 068°48'11"W
	Δ EMUTI	A3000+;K210-	-	-	-	18°28'03.41"N 068°32'40.30"W
<b>PALAS 2B</b>	<b>PALAS TWO BRAVO</b>					
	Δ PALAS	A16000+	068(057.25)	178.5	3000	16°34'00"N 071°41'00"W
	Δ PC111	A15000-;K230-	069(057)	17	3000	18°09'56.42"N 069°03'20.54"W
	Δ NADAX	A11000-/5000+;K210-	071(058.42)	17.31	3000	18°18'58"N 068°48'11"W
	Δ EMUTI	A3000+;K210-	-	-	-	18°28'03.41"N 068°32'40.30"W