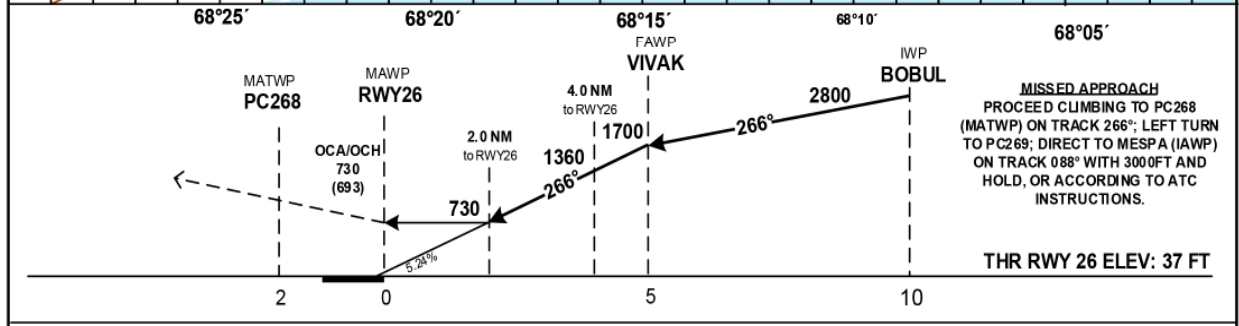
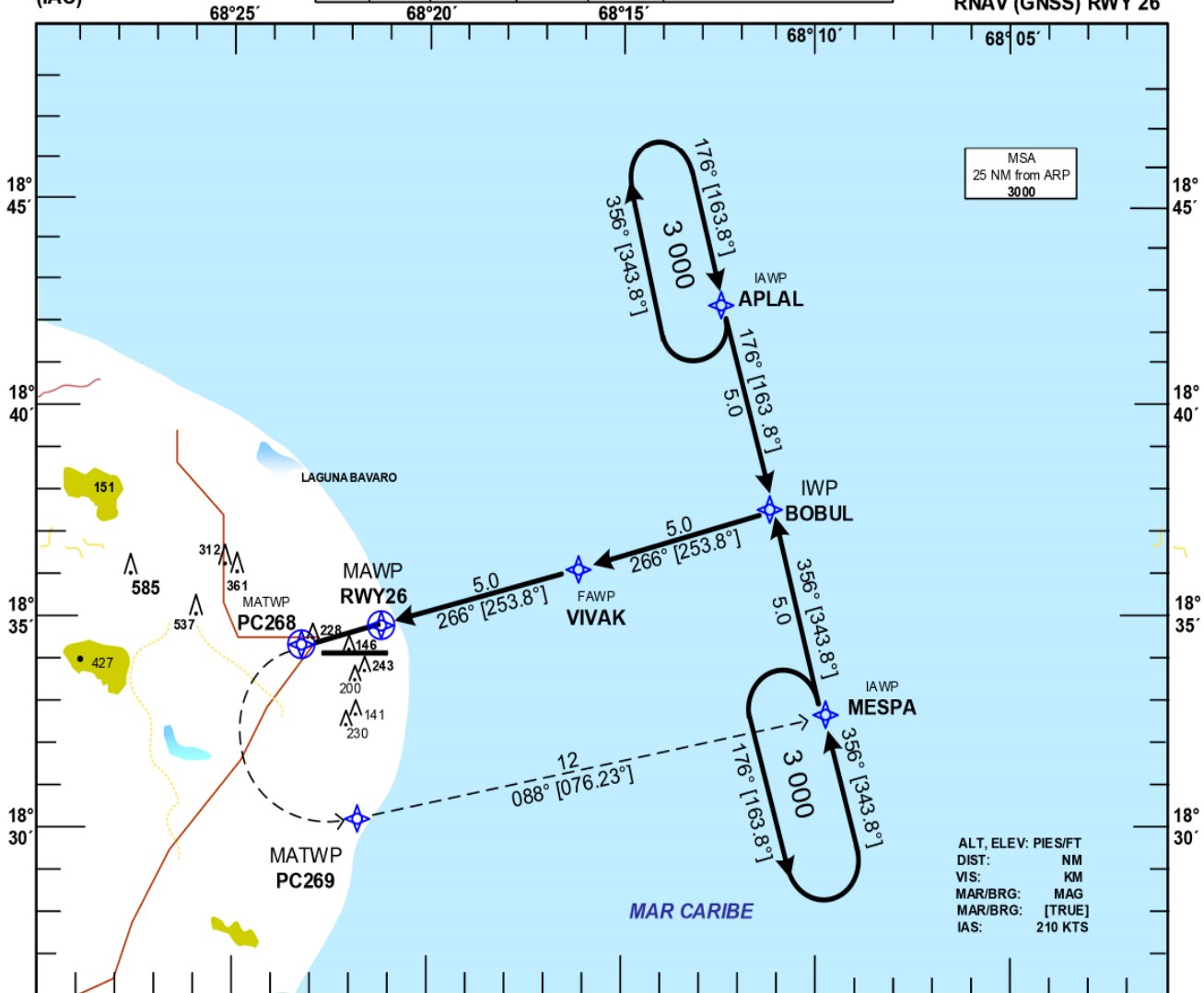


**INSTRUMENT  
APPROACH CHART  
(IAC)**

TRANSITION		Aerodrome	VAR	Threshold	SANTO DOMINGO	ACC 124.300
ALT 17000	LEVEL FL 180	Elevation 47 ft	$23^{\circ}$	Elevation 37 ft	PUNTA CANA	APP 119.750
					PUNTA CANA	TWR 118.800

**HIGÜEY  
PUNTA CANA INTL  
RNAV (GNSS) RWY 26**



OCA/H, CEILING AND VISIBILITY MINIMUMS				
CATEGORY	A	B	C	D
STRAIGHT-IN RWY 26	730 (693)	800 1.6	730 (693)	800 3.6
CIRCLING RWY 08	740 (703)	800 2.8	840 (803)	800 4.6

CHANGES: MAGNETIC TRACKS

<b>AEROPUERTO INT'L "PUNTA CANA" HIGUEY, R. D. MDPC RNAV (GNSS) RWY 26</b>		
<b>IDENT</b>	<b>LAT</b>	<b>LON</b>
APLAL (IAWP)	18°42'18.11"N	068°12'37.25"W
MESPA (IAWP)	18°32'38.87"N	068°09'43.95"W
BOBUL (IFWP)	18°37'26.08"N	068°11'09.83"W
VIVAK (FAWP)	18°36'04.88"N	068°16'14.02"W
RWY 26 (MAPWP)	18°34'41.13"N	068°21'17.40"W
PC268 (MATWP)	18°34'07.59"N	068°23'18.73"W
PC269 (MATWP)	18°29'47.32"N	068°21'59.37"W