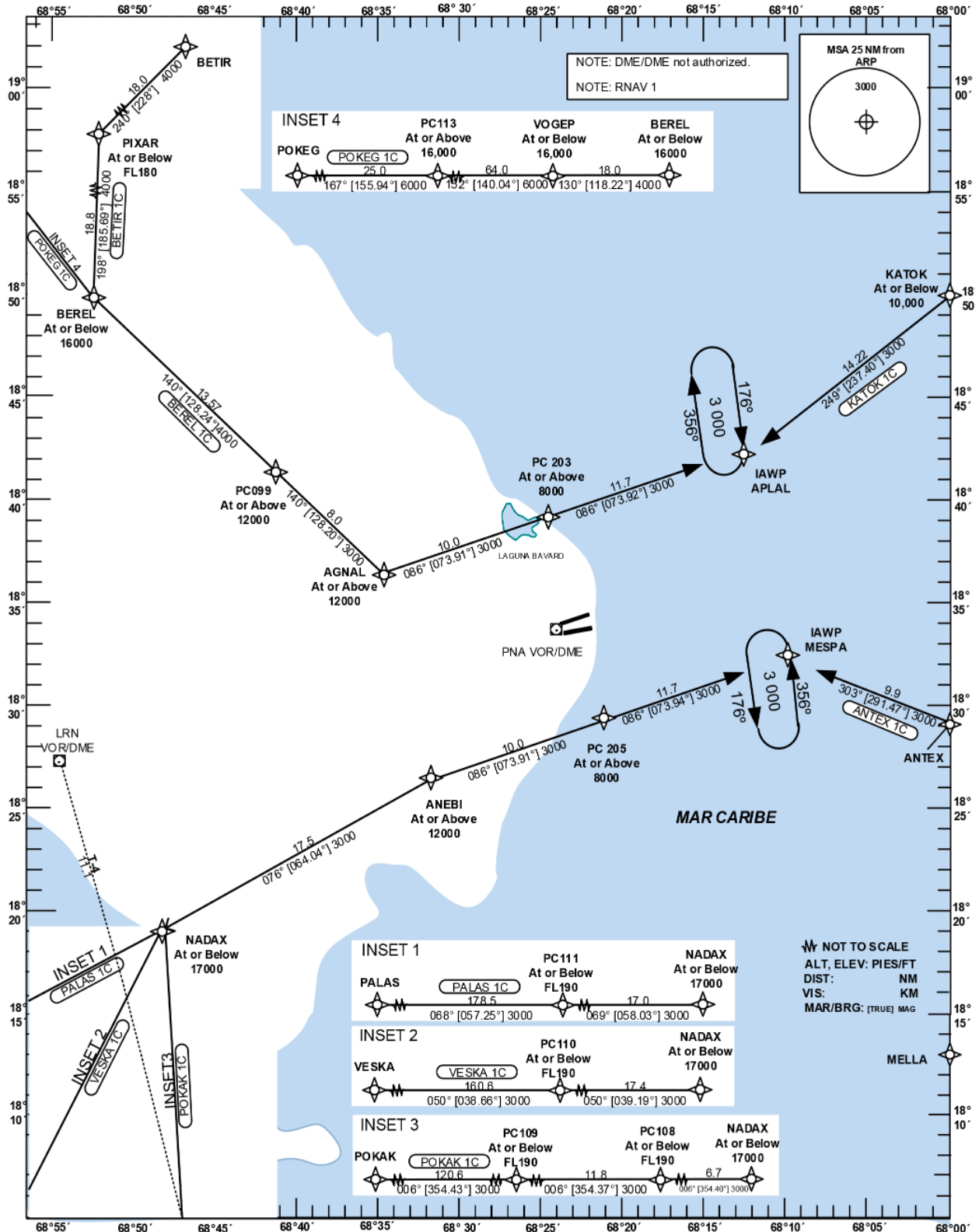


STANDARD INSTRUMENT ARRIVAL (STAR)

TRANSITION		Aerodrome	VAR	SANTO DOMINGO	ACC 124.300
ALT 17000	LEVEL FL 180	Elevation 47 ft	M 2.2	PUNTA CANA	124.600
				PUNTA CANA	APP 119.750
				PUNTA CANA	TWR 118.800

HIGUEY PUNTA CANA INTL RNAV (GNSS) RWY 26



CHANGE: POKEG 1C Arrival; BEREL 1C and BETIR 1C restrictions.

STANDARD ARRIVAL
ROUTES-INSTRUMENT
(STAR)

PUNTA CANA
HIGUEY INT'L
RNAV (GNSS) RWY 26

Designator	Identification Significant Points	Constraints	MAG (True) Track	Dist NM	MNM IFR Cruising Level	Coordinates
BETIR 1C	BETIR ONE CHARLIE					
	Δ BETIR	F180-;K250-	240 (228)	18	4000	19°20'35.00"N 068°36'16.00"W
	Δ PIXAR	F180-;K250-	198(185.69)	18.8	4000	19°08'30.00"N 068°50'25.00"W
	Δ BEREL	A16000-;K230-	140(128.24)	13.57	4000	18°49'42.00"N 068°52'23.00"W
	Δ PC099	A12000+;K220-	140(128.20)	8	3000	18°41'15.33"N 068°41'09.98"W
	Δ AGNAL	A12000+;K210-	086(073.91)	10	3000	18°36'17.19"N 068°34'32.84"W
	Δ PC203	A8000+;K210-	086(073.91)	11.7	3000	18°39'03.72"N 068°24'26.33"W
	Δ APLAL	A3000+;K210-	-	-	-	18°42'18.11"N 068°12'37.25"W
POKEG 1C	POKEG ONE CHALIE					
	Δ POKEG	A16000+	167(155.94)	25	6000	20°10'30.00"N 070°03'18.00"W
	Δ PC113	A16000+	152(140.04)	63.97	6000	19°47'34.85"N 069°52'29.48"W
	Δ VOGEP	A16000-;K270-	130(118.22)	18.04	4000	18°58'16.55"N 069°09'08.52"W
	Δ BEREL	F16000-;K230-	140(128.24)	13.57	4000	18°49'42.00"N 068°52'23.00"W
	Δ PC099	A12000+;K220-	140(128.20)	8	3000	18°41'15.33"N 068°41'09.98"W
	Δ AGNAL	A12000+;K210-	086(073.91)	10	3000	18°36'17.19"N 068°34'32.84"W
	Δ PC203	A8000+;K210-	086(073.91)	11.7	3000	18°39'03.72"N 068°24'26.33"W
Δ APLAL	A3000+;K210-	-	-	-	18°42'18.11"N 068°12'37.25"W	
BEREL 1C	BEREL ONE CHARLIE					
	Δ BEREL	A16000-;K230-	140(128.24)	13.57	4000	18°49'42.00"N 068°52'23.00"W
	Δ PC099	A12000+;K220-	140(128.20)	8	3000	18°41'15.33"N 068°41'09.98"W
	Δ AGNAL	A12000+;K210-	086(073.91)	10	3000	18°36'17.19"N 068°34'32.84"W
	Δ PC203	A8000+;K210-	086(073.91)	11.7	3000	18°39'03.72"N 068°24'26.33"W
	Δ APLAL	A3000+;K210-	-	-	-	18°42'18.11"N 068°12'37.25"W
KATOK 1C	KATOK ONE CHARLIE					
	Δ KATOK	A10000-;K210-	249(237.40)	14.22	3000	18°50'00"N 068°00'00"W
Δ APLAL	A3000+;K210-	-	-	-	18°42'18.11"N 068°12'37.25"W	
ANTEX 1C	ANTEX ONE CHARLIE					
	Δ ANTEX	A4000+;K210-	303(291.47)	9.9	3000	18°29'00"N 068°00'00"W
Δ MESPA	A3000+;K210-	-	-	-	18°32'38.87"N 068°09'43.95"W	
POKAK 1C	POKAK ONE CHARLIE					
	Δ POKAK	A16000+	006(354.43)	120.57	3000	16°00'00"N 068°34'00"W
	Δ PC109	F190-;K250-	006(354.37)	11.8	3000	18°00'28.91"N 068°46'16.76"W
	Δ PC108	F190-;K250-	006(354.40)	6.7	3000	18°12'14.19"N 068°47'29.56"W
	Δ NADAX	A17000-;K210-	076(064.04)	17.5	3000	18°18'58"N 068°48'11"W
	Δ ANEBI	A12000+;K210-	086(073.91)	10	3000	18°26'37.94"N 068°31'39.64"W
	Δ PC205	A8000+;K210-	086(073.94)	11.7	3000	18°29'24.76"N 068°21'32.43"W
	Δ MESPA	A3000+;K210-	-	-	-	18°32'38.87"N 068°09'43.95"W
VESKA 1C	VESKA ONE CHARLIE					
	Δ VESKA	A16000+	050(038.66)	160.57	3000	16°00'00"N 070°45'00"W
	Δ PC110	F190-;K250-	050(039.19)	17.4	3000	18°05'26.96"N 068°59'43.49"W
	Δ NADAX	A17000-;K210-	076(064.04)	17.5	3000	18°18'58"N 068°48'11"W
	Δ ANEBI	A12000+;K210-	086(073.91)	10	3000	18°26'37.94"N 068°31'39.64"W
	Δ PC205	A8000+;K210-	086(073.94)	11.7	3000	18°29'24.76"N 068°21'32.43"W
	Δ MESPA	A3000+;K210-	-	-	-	18°32'38.87"N 068°09'43.95"W
PALAS 1C	PALAS ONE CHARLIE					
	Δ PALAS	A16000+	068(057.25)	178.5	3000	16°34'00"N 071°41'00"W
	Δ PC111	F190-;K250-	069(058.03)	17	3000	18°09'56.42"N 069°03'20.54"W
	Δ NADAX	A17000-;K210-	076(064.04)	17.5	3000	18°18'58"N 068°48'11"W
	Δ ANEBI	A12000+;K210-	086(073.91)	10	3000	18°26'37.94"N 068°31'39.64"W
	Δ PC205	A8000+;K210-	086(073.94)	11.7	3000	18°29'24.76"N 068°21'32.43"W
	Δ MESPA	A3000+;K210-	-	-	-	18°32'38.87"N 068°09'43.95"W