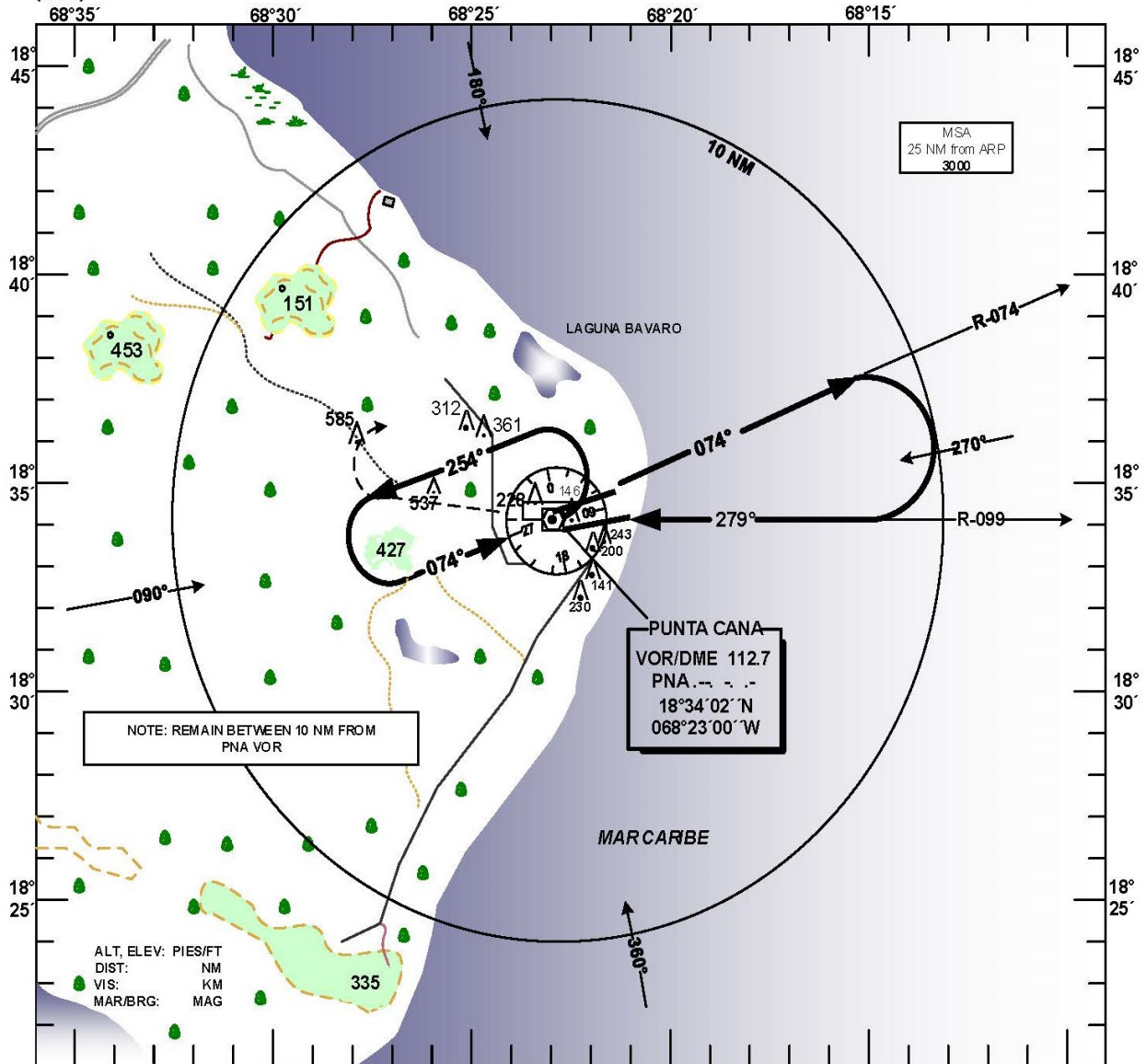


**INSTRUMENT
APPROACH CHART
(IAC)**

TRANSITION		Aerodrome	VAR	SANTO DOMINGO	ACC 124.300
ALT 17000	LEVEL FL 130	Elevation 47 ft	VAR 13°	PUNTA CANA	124.600
				PUNTA CANA	APP 119.750
				PUNTA CANA	TWR 118.800

**HIGÜEY
PUNTA CANA INTL
VOR RWY 27**



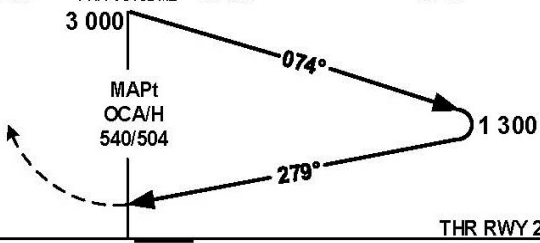
NOTE: REMAIN BETWEEN 10 NM FROM PNA VOR

PUNTA CANA
VOR/DME 112.7
PNA --- --
18°34'02" N
068°23'00" W

ALT, ELEV: PIES/FT
DIST: NM
VIS: KM
MAR/BRG: MAG

68°35' 68°30' 68°25' PNA VOR/DME 68°20' 68°15' 68°10'

MISSED APPROACH
CLIMB TO 2 000 FT ON PNA VOR R-279,
RIGHT TURN TO PNA VOR WITH 3 000 FT,
OR IN ACCORDANCE TO ATC
INSTRUCTIONS.



OCA/H, CEILING AND VISIBILITY MINIMUMS

CATEGORY	A	B	C	D
STRAIGHT-IN RWY 27	540 (504) 600	1.6	540 (504) 600	3.6
CIRCLING RWY 09	660 (613) 700	2.8	980 (933) 1 000	4.6

LAST CHANGES: TITLE FORMAT, MSA VALUES