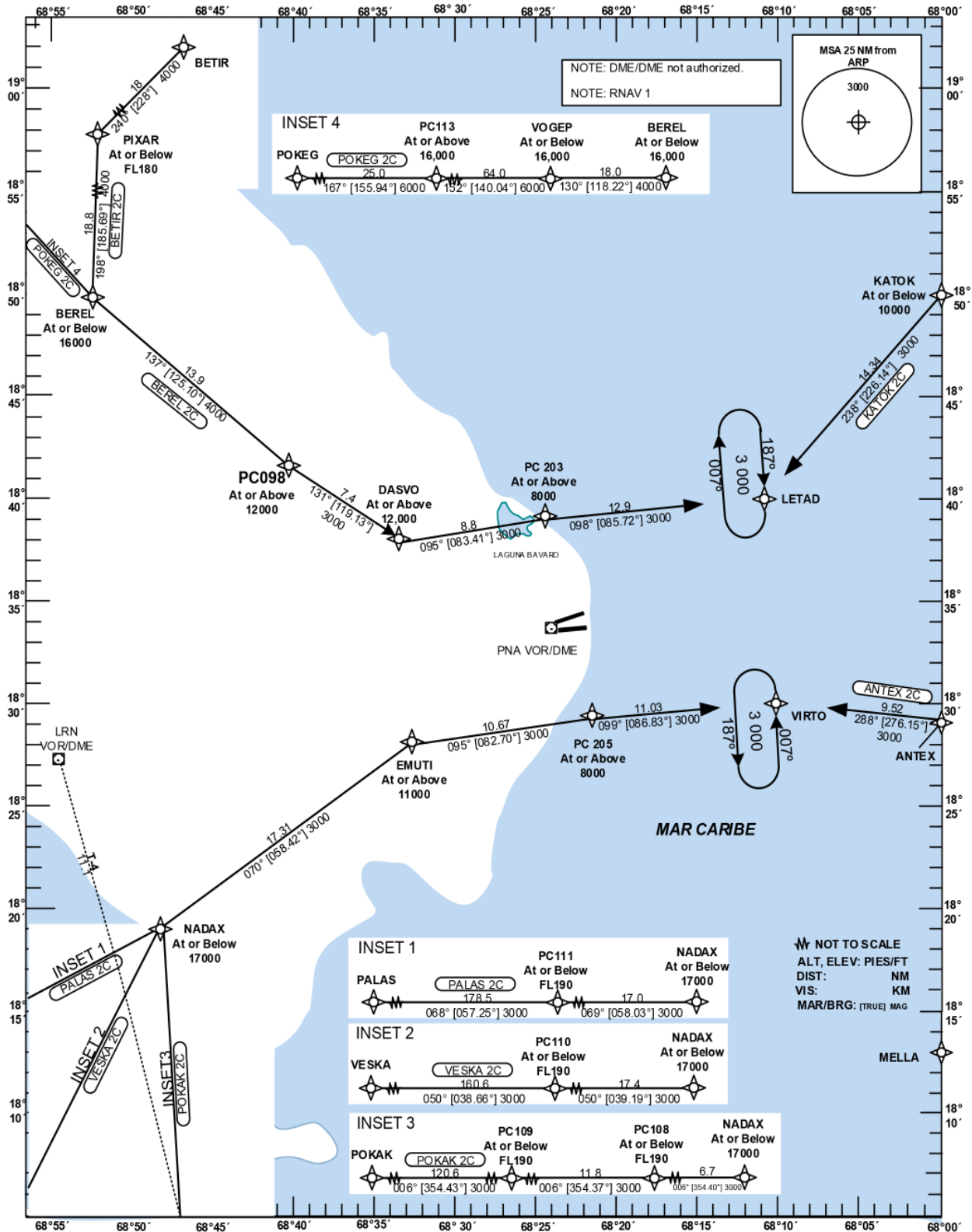


STANDARD INSTRUMENT ARRIVAL (STAR)

| TRANSITION | | Aerodrome Elevation | VAR | SANTO DOMINGO | ACC 124.300 |
|------------|--------------|---------------------|----------|---------------|-------------|
| ALT 17000 | LEVEL FL 180 | 47 ft | VAR 132° | PUNTA CANA | APP 119.750 |
| | | | | PUNTA CANA | TWR 118.800 |

HIGUEY PUNTA CANA INTL RNAV (GNSS) RWY 27



CHANGE: POKEG 2C Arrival; BEREL 2C and BETIR 2C restrictions.

STANDARD ARRIVAL ROUTES-INSTRUMENT (STAR) PUNTA CANA HIGUEY INT'L RNAV (GNSS) RWY 27

| Designator | Identification Significant Points | Constraints | MAG (True) Track | Dist NM | MNM IFR Cruising Level | Coordinates |
|-----------------|-----------------------------------|---------------|------------------|---------|------------------------------|------------------------------|
| BETIR 2C | BETIR TWO CHARLIE | | | | | |
| | BETIR | F180-;K250- | 240 (228) | 18 | 4000 | 19°20'35"N 068°36'16"W |
| | PIXAR | F180-;K250- | 198(185.69) | 18.8 | 4000 | 19°08'30"N 068°50'25"W |
| | BEREL | A16000-;K230- | 137(125.10) | 13.88 | 4000 | 18°49'42"N 068°52'23"W |
| | PC098 | A12000+;K220- | 131(119.13) | 7.4 | 3000 | 18°41'40.23"N 068°40'25.69"W |
| | DASVO | A12000+;K210- | 095(083.41) | 8.78 | 3000 | 18°38'03.28"N 068°33'37.53"W |
| | PC203 | A8000+;K210- | 098(085.72) | 12.9 | 3000 | 18°39'03.72"N 068°24'26.33"W |
| LETAD | A3000+;K210- | - | - | - | 18°40'01.14"N 068°10'53.56"W | |
| POKEG 2C | POKEG TWO CHARLIE | | | | | |
| | POKEG | A16000+ | 167(155.94) | 25 | 6000 | 20°10'30.00"N 070°03'18.00"W |
| | PC113 | A16000+ | 152(140.04) | 63.97 | 6000 | 19°47'34.85"N 069°52'29.48"W |
| | VOGEP | A16000-;K270- | 130(118.22) | 18.04 | 4000 | 18°58'16.55"N 069°09'08.52"W |
| | BEREL | A16000-;K230- | 137(125.10) | 13.88 | 4000 | 18°49'42.00"N 068°52'23.00"W |
| | PC098 | A12000+;K220- | 131(119.13) | 7.4 | 3000 | 18°41'40.23"N 068°40'25.69"W |
| | DASVO | A12000+;K210- | 095(083.41) | 8.78 | 3000 | 18°38'03.28"N 068°33'37.53"W |
| PC203 | A8000+;K210- | 098(085.72) | 12.9 | 3000 | 18°39'03.72"N 068°24'26.33"W | |
| LETAD | A3000+;K210- | - | - | - | 18°40'01.14"N 068°10'53.56"W | |
| BEREL 2C | BEREL TWO CHARLIE | | | | | |
| | BEREL | A16000-;K230- | 137(125.10) | 13.88 | 4000 | 18°49'42.00"N 068°52'23.00"W |
| | PC098 | A12000+;K220- | 131(119.13) | 7.4 | 3000 | 18°41'40.23"N 068°40'25.69"W |
| | DASVO | A12000+;K210- | 095(083.41) | 8.78 | 3000 | 18°38'03.28"N 068°33'37.53"W |
| | PC203 | A8000+;K210- | 098(085.72) | 12.9 | 3000 | 18°39'03.72"N 068°24'26.33"W |
| LETAD | A3000+;K210- | - | - | - | 18°40'01.14"N 068°10'53.56"W | |
| KATOK 2C | KATOK TWO CHARLIE | | | | | |
| | KATOK | A10000-;K210- | 238(226.14) | 14.34 | 3000 | 18°50'00"N 068°00'00"W |
| LETAD | A3000+;K210- | - | - | - | 18°40'01.14"N 068°10'53.56"W | |
| ANTEX 2C | ANTEX TWO CHARLIE | | | | | |
| | ANTEX | A4000+;K210- | 288(276.15) | 9.52 | 3000 | 18°29'00"N 068°00'00"W |
| VIRTO | A3000+;K210- | - | - | - | 18°30'01.18"N 068°09'57.41"W | |
| POKAK 2C | POKAK TWO CHARLIE | | | | | |
| | POKAK | A16000+ | 006(354.43) | 120.57 | 3000 | 16°00'00"N 068°34'00"W |
| | PC109 | F190-;K250- | 006(354.37) | 11.8 | 3000 | 18°00'28.91"N 068°46'16.76"W |
| | PC108 | F190-;K250- | 006(354.40) | 6.7 | 3000 | 18°12'14.19"N 068°47'29.56"W |
| | NADAX | A17000-;K230- | 070(058.42) | 17.31 | 3000 | 18°18'58"N 068°48'11"W |
| | EMUTI | A11000+;K210- | 095(082.70) | 10.67 | 3000 | 18°28'03.41"N 068°32'40.30"W |
| | PC205 | A8000+;K210- | 099(086.83) | 11.03 | 3000 | 18°29'24.76"N 068°21'32.43"W |
| VIRTO | A3000+;K210- | - | - | - | 18°30'01.18"N 068°09'57.41"W | |
| VESKA 2C | VESKA TWO CHARLIE | | | | | |
| | VESKA | A16000+ | 050(038.66) | 160.57 | 3000 | 16°00'00"N 070°45'00"W |
| | PC110 | A190-;K250- | 050(039.19) | 17.4 | 3000 | 18°05'26.96"N 068°59'43.49"W |
| | NADAX | A17000-;K230- | 070(058.42) | 17.31 | 3000 | 18°18'58"N 068°48'11"W |
| | EMUTI | A11000+;K210- | 095(082.70) | 10.67 | 3000 | 18°28'03.41"N 068°32'40.30"W |
| | PC205 | A8000+;K210- | 099(086.83) | 11.03 | 3000 | 18°29'24.76"N 068°21'32.43"W |
| VIRTO | A3000+;K210- | - | - | - | 18°30'01.18"N 068°09'57.41"W | |
| PALAS 2C | PALAS TWO CHARLIE | | | | | |
| | PALAS | A16000+ | 068(057.25) | 178.5 | 3000 | 16°34'00"N 071°41'00"W |
| | PC111 | A190-;K250- | 069(058.03) | 17 | 3000 | 18°09'56.42"N 069°03'20.54"W |
| | NADAX | A17000-;K230- | 070(058.42) | 17.31 | 3000 | 18°18'58"N 068°48'11"W |
| | EMUTI | A11000+;K210- | 095(082.70) | 10.67 | 3000 | 18°28'03.41"N 068°32'40.30"W |
| | PC205 | A8000+;K210- | 099(086.83) | 11.03 | 3000 | 18°29'24.76"N 068°21'32.43"W |
| VIRTO | A3000+;K210- | - | - | - | 18°30'01.18"N 068°09'57.41"W | |