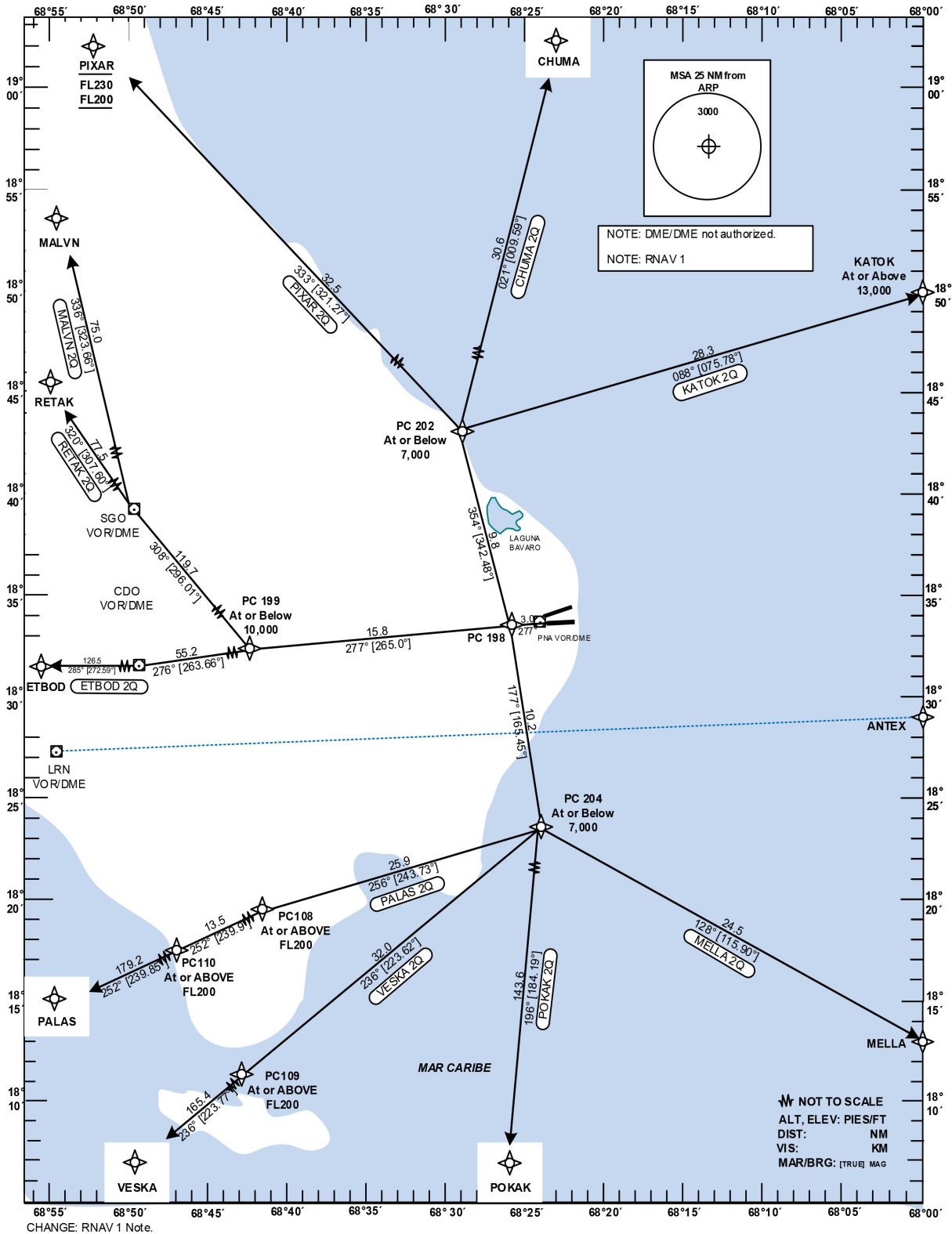


STANDARD INSTRUMENT DEPARTURE (SID)

TRANSITION		Aerodrome	VAR	SANTO DOMINGO
ALT	LEVEL	Elevation		ACC 124.300
17000	FL 180	47 ft	M 21	124.600
				PUNTA CANA APP 119.750
				PUNTA CANA TWR 118.800

HIGUEY PUNTA CANA INTL RNAV (GNSS) RWY 27



STANDARD DEPARTURE
ROUTES-INSTRUMENT
(SID)

PUNTA CANA
HIGÜEY INTL
RNAV (GNSS) RWY 27

Designator	Route	After Take-Off		Remarks	
		Climb to	Contact	Point	Coordinates
1	2	3	4	5	6
PIXAR 2Q	PIXAR TWO QUEBEC Climb on track 277 to PC198;RT on track 354 to PC202;LT on track 333 to PIXAR [500+] - PC198 [A7000-;R] - PC202 [A7000-;L] - PIXAR [F230-/F200+]	7000	Santo Domingo ACC 124.300 ACC 124.600	PC198 PC202 PIXAR 1	18°33'42.19"N 068°25'49.76"W 18°43'03.38"N 068°28'55.66"W 19°08'30.00"N 068°50'25.00"W
CHUMA 2Q	CHUMA TWO QUEBEC Climb on track 277 to PC198;RT on track 354 to PC202;RT on track 021 to CHUMA [500+] - PC198 [A7000-;R] - PC202 [A7000-;R] - CHUMA	7000		PC198 PC202 CHUMA	18°33'42.19"N 068°25'49.76"W 18°43'03.38"N 068°28'55.66"W 19°13'20.40"N 068°23'32.40"W
KATOK 2Q	KATOK TWO QUEBEC Climb on track 277 to PC198;RT on track 354 to PC202;RT on track 088 to KATOK [[500+] - PC198 [A7000-;R]- PC202 [A7000-;R] - KATOK [A13000+]	7000		PC198 PC202 KATOK	18°33'42.19"N 068°25'49.76"W 18°43'03.38"N 068°28'55.66"W 18°50'00.00"N 068°00'00.00"W
MELLA 2Q	MELLA TWO QUEBEC Climb on track 277 to PC198;LT on track 177 to PC204; LT on track 128 to MELLA [500+] - PC198 [A7000-;L] -PC204[A7000-;L] - MELLA	7000		PC198 PC204 MELLA	18°33'42.19"N 068°25'49.76"W 18°23'45.39"N 068°23'07.51"W 18°13'00.00"N 068°00'00.00"W
POKAK 2Q	POKAK TWO QUEBEC Climb on track 277 to PC198;LT on track 177 to PC204;RT on track 196 to POKAK [500+] - PC198 [A7000-;L] -PC204[A7000-;R] - POKAK	7000		PC198 PC204 POKAK	18°33'42.19"N 068°25'49.76"W 18°23'45.39"N 068°23'7.51"W 16°00'00.00"N 068°33'60.00"W
VESKA 2Q	VESKA TWO QUEBEC Climb on track 277 to PC198;LT on track 177 to PC204;RT on track 236 via PC109 to VESKA [500+] - PC198 [A7000-;L] -PC204[A7000-;R]- PC109 [F200+] - VESKA	7000		PC198 PC204 PC109 VESKA	18°33'42.19"N 068°25'49.76"W 18°23'45.39"N 0 68°23'7.51"W 18°00'28.91"N 068°46'16.76"W 16°00'00.00"N 070°45'00.00"W
PALAS 2Q	PALAS TWO QUEBEC Climb on track 277 to PC198;LT on track 177 to PC204;RT on track 256 to PC108; LT on track 252 via PC110 to PALAS [500+] - PC198 [A7000-;L] -PC204[A7000-;R]-PC108 [F200+;L] - PC110 [F200+] - PALAS	7000		PC198 PC204 PC108 PC110 PALAS	18°33'42.19"N 068°25'49.76"W 18°23'45.39"N 0 68°23'7.51"W 18°12'14.19"N 68°47'29.56"W 18°05'26.96"N 068°59'43.49"W 16°34'00.00"N 071°41'00.00"W
ETBOD 2Q	ETBOD TWO QUEBEC Climb on track 277 via PC198 to PC199; LT on track 276 to CDO; RT on track 285 to ETBOD [500+] - PC198 [A10000-] - PC199 [A10000-;L] - CDO [R] - ETBOD	10000		PC198 PC199 CDO ETBOD	18°33'42.19"N 068°25'49.76"W 18°32'18.60"N 068°42'22.69"W 18°26'02.97"N 069°40'02.43"W 18°31'00.00"N 071°53'00.00"W
RETAK 2Q	RETAK TWO QUEBEC Climb on track 277 via PC198 to PC199; RT on track 308 to SGO; RT on track 320 to RETAK [500+] - PC198 [A10000-] - PC199 [A10000-;R] - SGO [R] - RETAK	10000		PC198 PC199 SGO RETAK	18°33'42.19"N 068°25'49.76"W 18°32'18.60"N 068°42'22.69"W 19°24'26.34"N 070°36'13.70"W 20°11'42.00"N 071°41'30.00"W
MALVN 2Q	MALVN TWO QUEBEC Climb on track 277 via PC198 to PC199; RT on track 308 to SGO; RT on track 336 to MALVN [500+] - PC198 [A10000-] - PC199 [A10000-;R] - SGO [R] - MALVN	10000		PC198 PC199 SGO MALVN	18°33'42.19"N 068°25'49.76"W 18°32'18.60"N 068°42'22.69"W 19°24'26.34"N 070°36'13.70"W 20°25'00.00"N 071°23'34.00"W