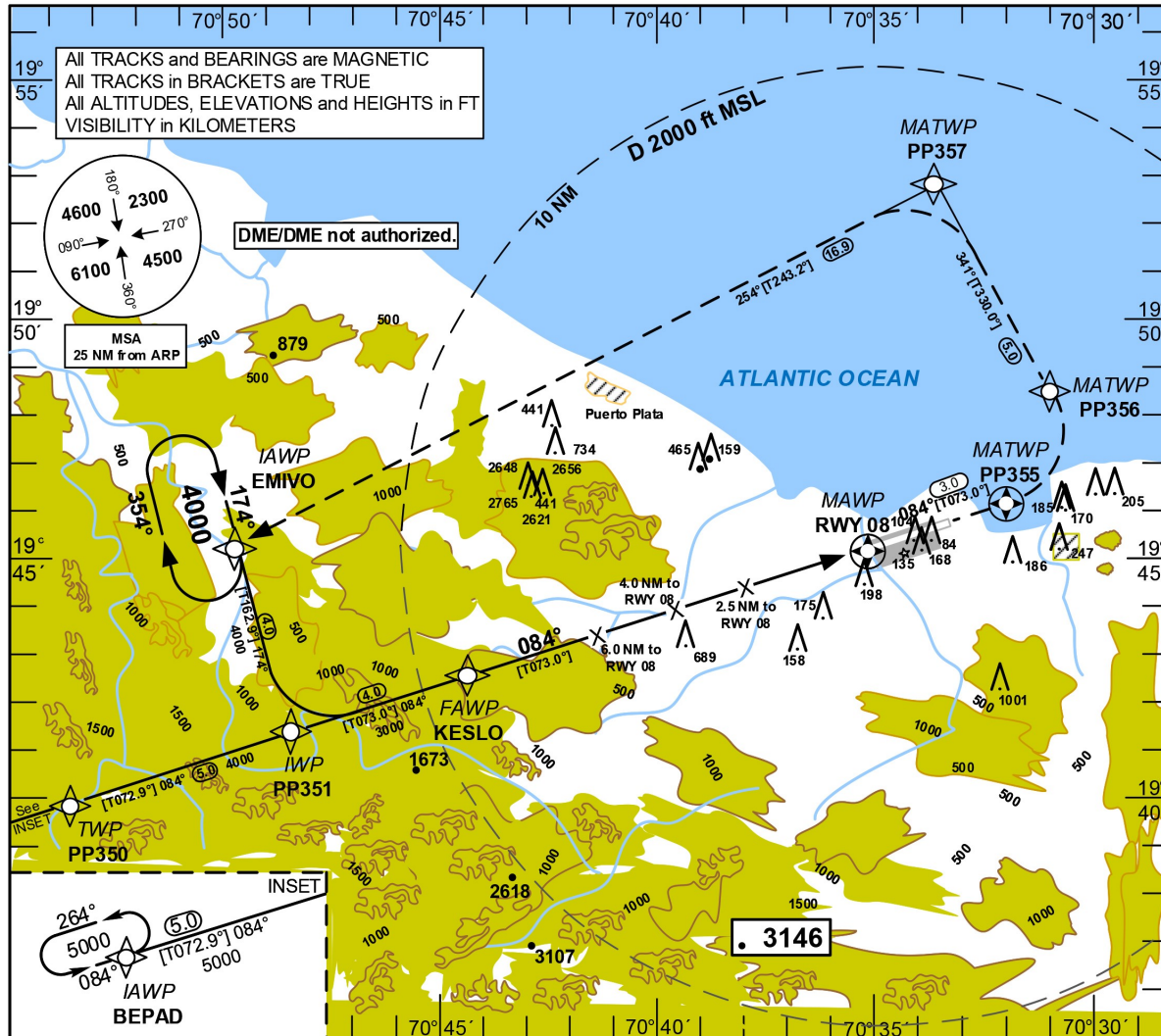


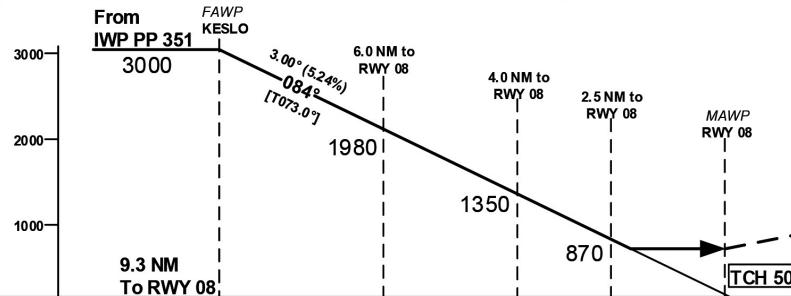
INSTRUMENT APPROACH CHART (IAC)

TRANSITION		Aerodrome Elevation 17 ft	VAR 11M	Threshold Elevation 17 ft	SANTO DOMINGO ACC 124.300 CIBAO APP 119.000 PUERTO PLATA TWR 118.000
ALT 17000	LEVEL FL180				

PUERTO PLATA GREGORIO LUPERON INTL RNAV (GNSS) Z RWY 08



DIST RWY 08	9	8	7	6	5	4	3	2
ALTITUDE	2940	2620	2300	1980	1660	1340	1030	710



MISSED APPROACH PROCEDURE RNAV (GNSS)
Climb on track 084° to PP355; LT via PP356
On track 341° to PP357; LT on track 254° to EMIVO to 4000 or in accordance with ATC Instructions.

PP 355[L] - PP 356[K200] - PP 357[L] - EMIVO[A4000]

NOTE:
In case of GNSS - Failure climb straight ahead To 4000 ft, then LT heading 360° to 5000 ft and Contact ATC. This only applies to the final approach segment.

PROFILE SCALE 1: 250.0000

OCA/H Ceiling and Visibility Minimums				
CAT	A	B	C	D
OCA (OCH)	660 (643)	660 (643)	660 (643)	660 (643)
CEILING	700	700	700	700
VISIBILITY	1.6	1.6	2.4	2.8

GS	kt	80	100	120	140	160	180
KESLO - RWY 08 (9.3 NM)	MIN:SEC	6:54	5:31	4:36	3:57	3:27	3:04
Rate of descent (5.24%)	Ft:MIN	420	530	640	740	850	960

CHANGE: MAWP (RWY 08) GEOGRAPHIC COORDINATES.

AEROPUERTO INT'L "GREGORIO LUPERON", PUERTO PLATA, R.D. "GREGORIO LUPERON" INT'L AIRPORT, PUERTO PLATA, R.D. MDPP RNAV (GNSS) Z RWY 08		
IDENT	LAT	LONG
EMIVO (IAWP)	19°45'11.28" N	070°49'41.72" W
BEPAD (IAWP)	19°38'24.19" N	070°58'34.94" W
PP351 (IWP)	19°41'20.94" N	070°48'27.17" W
PP350 (TWP)	19°39'52.64" N	070°53'31.10" W
KESLO (FAWP)	19°42'31.48" N	070°44'23.95" W
RWY 08 (MAWP)	19°45'14.28" N	070°35'01.02" W
PP355 (MATWP)	19°46'06.51" N	070°32'00.19" W
PP356 (MATWP)	19°48'30.32" N	070°31'00.16" W
PP357 (MATWP)	19°52'51.46" N	070°33'39.51" W