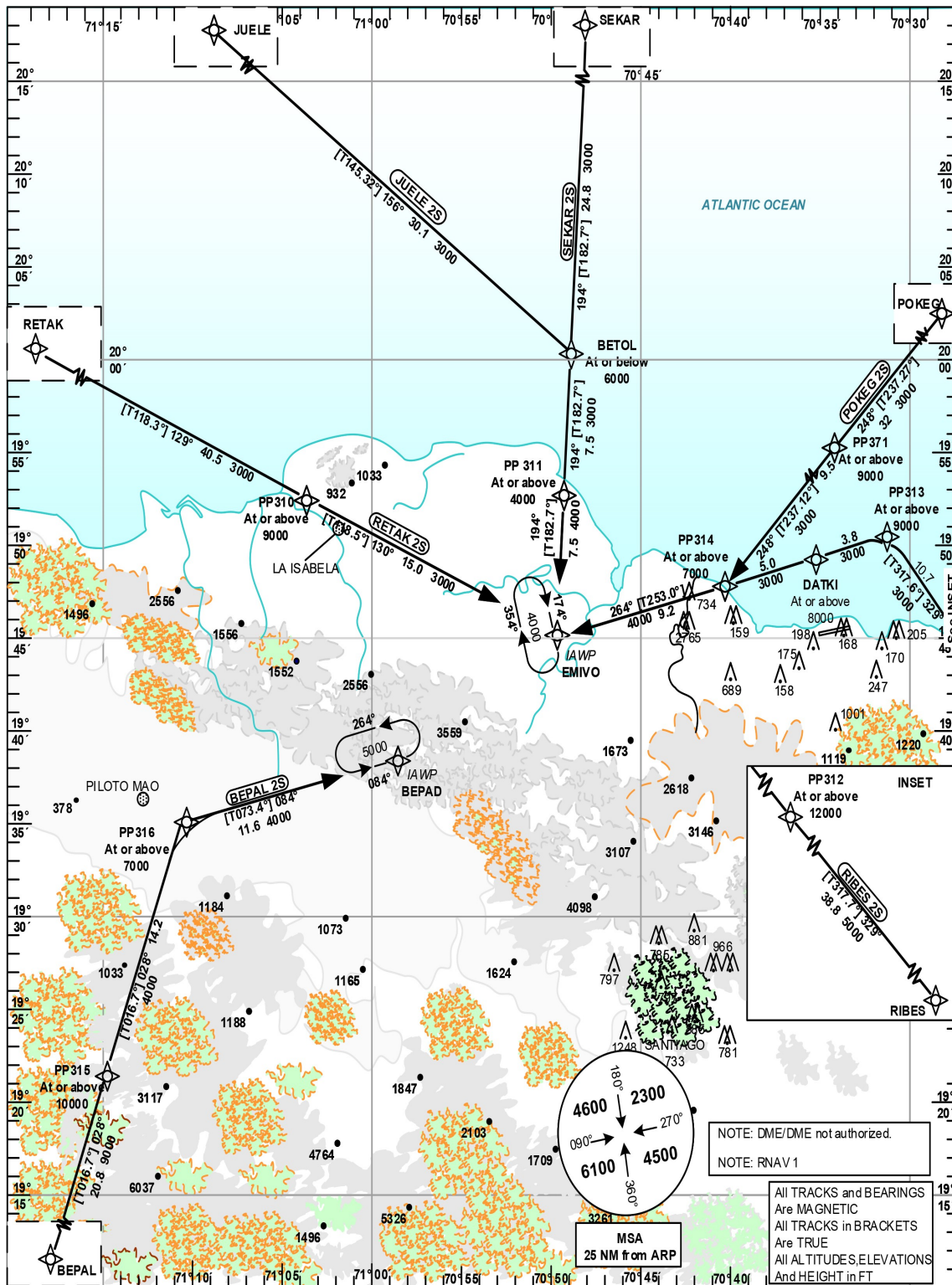


**STANDARD ARRIVAL
CHART - INSTRUMENT
(STAR)**

TRANSITION		VAR	Aerodrome Elevation 17 ft	SANTO DOMINGO	
ALT 17 000	LEVEL FL 180			CIBAO	ACC 124.300
				APP 119.000	
				PUERTO PLATA	TWR 118.000

**PUERTO PLATA
GREGORIO LUPERON INTL
RNAV (GNSS) RWY 08**



CHANGE: RNAV 1 Note.

STANDARD ARRIVAL
ROUTES-INSTRUMENT
(STAR)

PUERTO PLATA
GREGORIO LUPERON INTL
RNAV (GNSS) RWY 08

Designator	Identification Significant Points	Constraints	MAG (True) Track	Dist NM	MNM IFR Cruising Level	Coordinates
BEPAL 2S	BEPAL TWO SIERRA					
	Δ BEPAL	A10000+; K250-	028 (016.7)	20.8	9000	19°01'23.00"N 071°21'04.00"W
	Δ PP315	A10000+; K250-	028 (016.7)	14.2	4000	19°21'25.40"N 071°14'44.37"W
	Δ PP316	A7000+; K220-; R	084 (073.4)	11.6	4000	19°35'05.55"N 071°10'24.49"W
	Δ BEPAD	A5000+; K210-				19°38'24.19"N 070°58'34.94"W
RETAK 2S	RETAK TWO SIERRA					
	Δ RETAK	A9000+; K250-	129 (118.3)	40.5	3000	20°11'42.00"N 071°41'30.00"W
	Δ PP310	A9000+; K220-	130 (118.5)	15.0	3000	19°52'22.82"N 071°03'40.31"W
	Δ EMIVO	A4000+; K210-				19°45'11.28"N 070°49'41.72"W
RIBES 2S	RIBES TWO SIERRA					
	Δ RIBES	A12000+; K250-	329 (317.7)	38.8	5000	19°13'48.00"N 069°56'05.00"W
	Δ PP312	A12000+; K250-	329 (317.6)	10.7	3000	19°42'34.97"N 070°23'46.05"W
	Δ PP313	A9000+; K220-; L	264 (253.0)	3.8	3000	19°50'29.15"N 070°31'24.37"W
	Δ DATKI	A8000+; K210-	264 (253.0)	14.2	4000	19°49'22.12"N 070°35'16.41"W
	Δ EMIVO	A4000+; K210-				19°45'11.28"N 070°49'41.72"W
SEKAR 2S	SEKAR TWO SIERRA					
	Δ SEKAR	A9000+; K250-	194 (182.7)	24.8	3000	20°25'00.00"N 070°47'42.00"W
	Δ BETOL	A6000-; K220-	194 (182.7)	7.5	3000	20°00'13.66"N 070°48'56.73"W
	Δ PP311	A4000+; K210-	194 (182.7)	7.5	4000	19°52'42.47"N 070°49'19.24"W
	Δ EMIVO	A4000+; K210-				19°45'11.28"N 070°49'41.72"W
JUELE 2S	JUELE TWO SIERRA					
	Δ JUELE	A9000+; K250-	156 (145.32)	30.1	3000	20°25'04.00"N 071°07'07.00"W
	Δ BETOL	A6000-; K220-; R	194 (182.7)	7.5	3000	20°00'13.66"N 070°48'56.73"W
	Δ PP311	A4000+; K210-	194 (182.7)	7.5	4000	19°52'42.47"N 070°49'19.24"W
	Δ EMIVO	A4000+; K210-				19°45'11.28"N 070°49'41.72"W
POKEG 2S	POKEG TWO SIERRA					
	Δ POKEG	A9000+; K250-	248 (237.27)	32	3000	20°10'30.00"N 070°03'18.00"W
	Δ PP371	A9000+; K220-	248 (237.12)	9.5	3000	19°53'05.69"N 070°31'51.81"W
	Δ PP314	A7000+; K210-; R	264 (253.0)	9.2	4000	19°47'54.00"N 070°40'20.95"W
	Δ EMIVO	A4000+; K210-				19°45'11.28"N 070°49'41.72"W
DME/DME not authorized.						