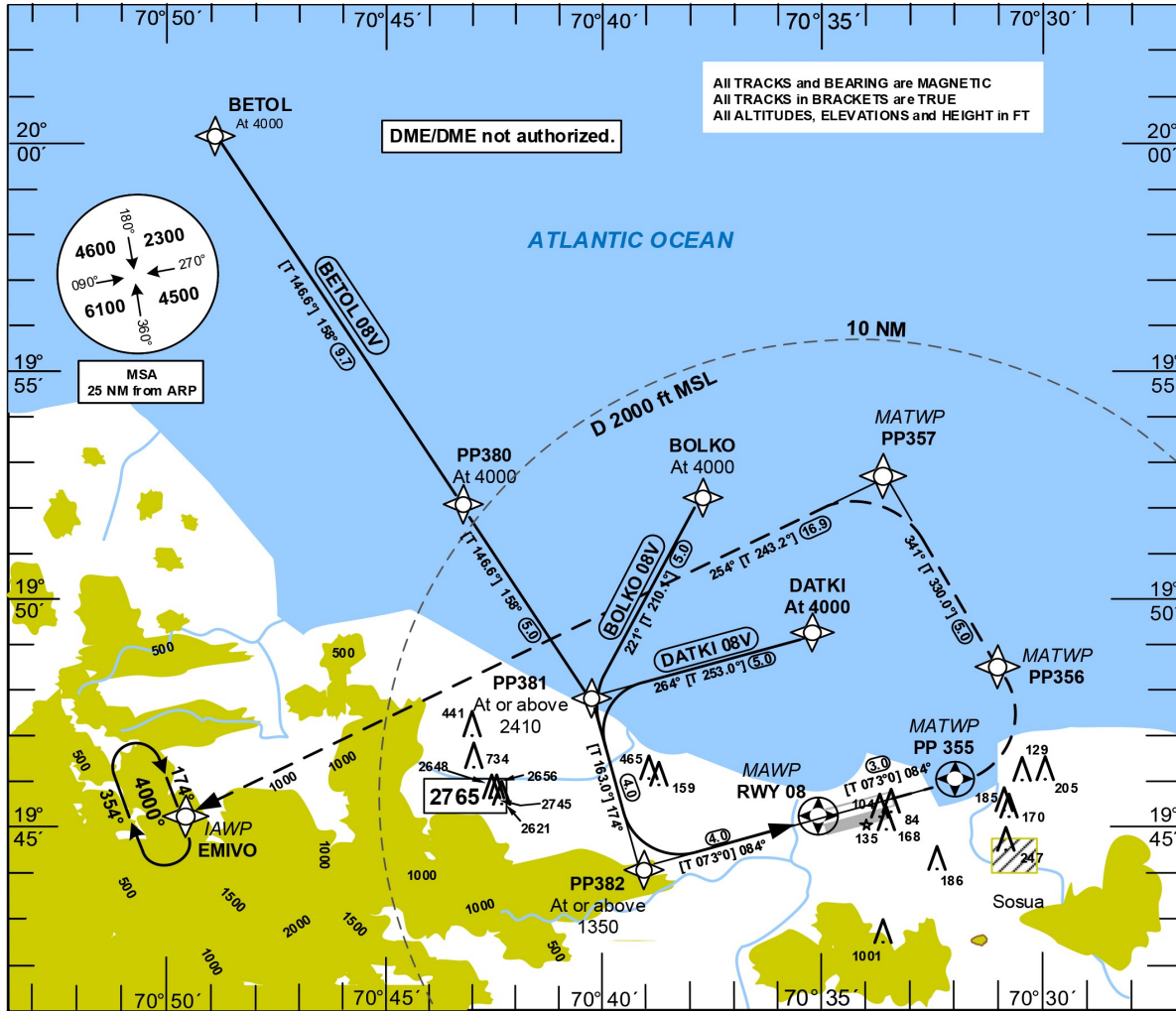


VISUAL APPROACH CHART (VAC)

TRANSITION		Aerodrome	VAR 11°W	Threshold Elevation 17 ft	SANTO DOMINGO ACC 124.300
ALT	LEVEL	Elevation			CIBAO APP 119.000
17000	FL 180	17 ft			PUERTO PLATA TWR1 18.000

PUERTO PLATA
GREGORIO LUPERON INTL
VISUAL
RNAV (GNSS Guided) RWY 08



- Pilot must maintain visual reference to the terrain and report The aerodrome in sight.
- Pilot is requesting or ATC suggests a visual approach.
- Radar vectors can be issued by ATC to join the visual Approach procedure.

WEATHER MINIMA

Ground visibility : \geq 5 Km
Ceiling : \geq 4000 ft GND

MISSED APPROACH

Climb on track 084° to PP355; LT via PP356 on track 341° to PP357; LT on track 254° to EMIVO to 4000 ft or in accordance with ATC instructions.

WAYPOINT LIST (WGS 84)

WAYPOINT COORDINATES

WP	LATITUDE	LONGITUDE	REMARKS
BETOL	N 20 00 13.66	W 70 48 56.73	
BOLKO	N 19 52 14.77	W 70 37 41.25	
DATKI	N 19 49 22.12	W 70 35 16.41	
EMIVO	N 19 45 11.28	W 70 49 41.72	IAWP
PP380	N 19 52 05.64	W 70 43 16.24	
PP381	N 19 47 54.00	W 70 40 20.95	
PP382	N 19 44 03.30	W 70 39 06.39	
PP355	N 19 46 06.51	W 70 32 00.19	MATWP
PP356	N 19 48 30.32	W 70 31 00.16	MATWP
PP357	N 19 52 51.46	W 70 33 39.51	MATWP
RWY 08	N 19 45 14.28	W 70 35 01.02	MAWP

ROUTE DESCRIPTION

ROUTE	WAYPOINT SEQUENCE
BETOL 08V	BETOL[A4000] - PP380[A4000] - PP381[K185-; A2410+; R] - PP382[K185-; A1350+; L] - RWY 08
BOLKO 08V	BOLKO[A4000] - PP381[K185-; A2410+; L] - PP382[K185-; A1350+; L] - RWY 08
DATKI 08V	DATKI[A4000] - PP381[K185-; A2410+; L] - PP382[K185-; A1350+; L] - RWY 08

CHANGE: MAWP (RWY 08) GEOGRAPHIC COORDINATES.