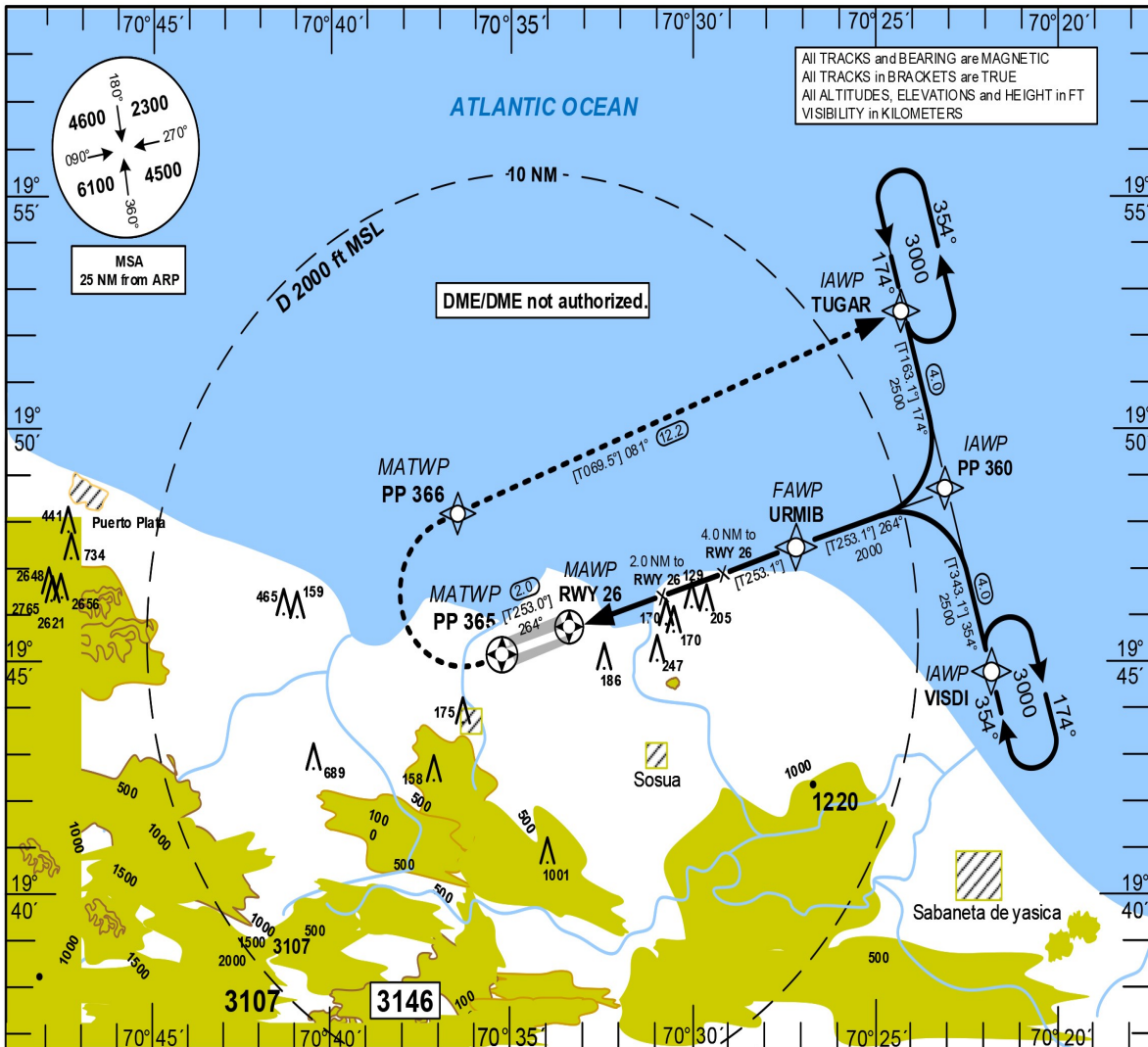


**INSTRUMENT  
APPROACH  
CHART (IAC)**

TRANSITION		Aerodrome	VAR	Threshold	SANTO DOMINGO	ACC 124.300
ALT	LEVEL	Elevation		Elevation	CIBAO	APP 119.000
17000	FL 180	17 ft		17 ft	PUERTO PLATA	TWR 118.000

**PUERTO PLATA  
GREGORIO LUPERON INTL  
RNAV (GNSS) RWY 26**

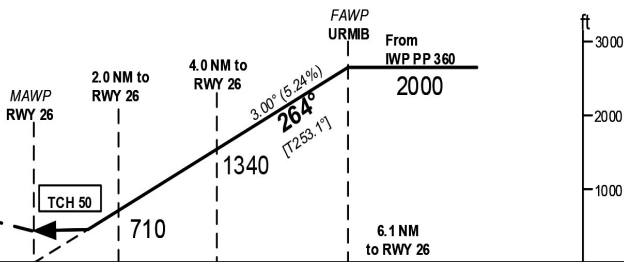


DIST RWY 26	2	3	4	5	6
ALTITUDE	710	1030	1340	1660	1980

**MISSED APPROACH PROCEDURE**  
RNAV (GNSS)  
Climb on track 284° to PP365; RT via PP366  
On track 081° to TUGAR; to 3000 or in accordance  
With ATC instructions.

PP 365[R] - PP 366[K200-] - TUGAR [A3000]

**NOTE:**  
In case of GNSS - Failure immediate RT; climb  
on track 360° to 5000ft and contact ATC.



CAT	A	B	C	D
OCA (OCH)	590 (573)	590 (573)	590 (573)	590 (573)
CEILING	600	600	600	600
VISIBILITY	1.6	1.6	2.4	2.4

GS	kt	80	100	120	140	160	180
URMIB - RWY26 (6.1NM)	MIN:SEC	3:35	3:40	3:03	2:37	2:17	2:02
Rate of descent (5.24%)	FT/MIN	420	530	640	740	850	960

CHANGE: MAWP (RWY 26) GEOGRAPHIC COORDINATES; THR 26 ELEVATION.

<b>AEROPUERTO INT'L "GREGORIO LUPERON", PUERTO PLATA, R.D. "GREGORIO LUPERON" INT'L AIRPORT, PUERTO PLATA, R.D. MDPP RNAV (GNSS) RWY 26</b>		
<b>IDENT</b>	<b>LAT</b>	<b>LONG</b>
TUGAR (IAWP)	19°52'30.31" N	070°24'21.77" W
VISDI (IAWP)	19°44'49.29" N	070°21'53.84" W
PP360 (IWP)	19°48'39.80" N	070°23'07.78" W
URMIB (FAWP)	19°47'29.75" N	070°27'11.30" W
RWY 26 (MAWP)	19°45'42.26" N	070°33'24.09" W
PP365 (MATWP)	19°45'07.92" N	070°35'23.21" W
PP366 (MATWP)	19°48'13.45" N	070°36'29.99" W