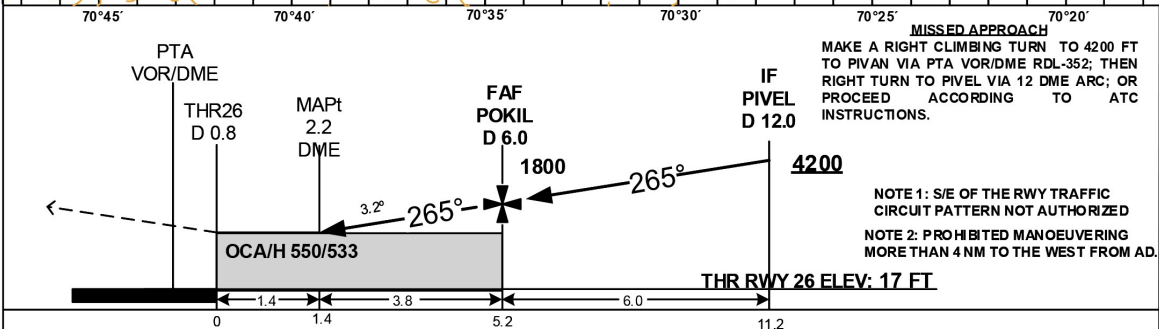
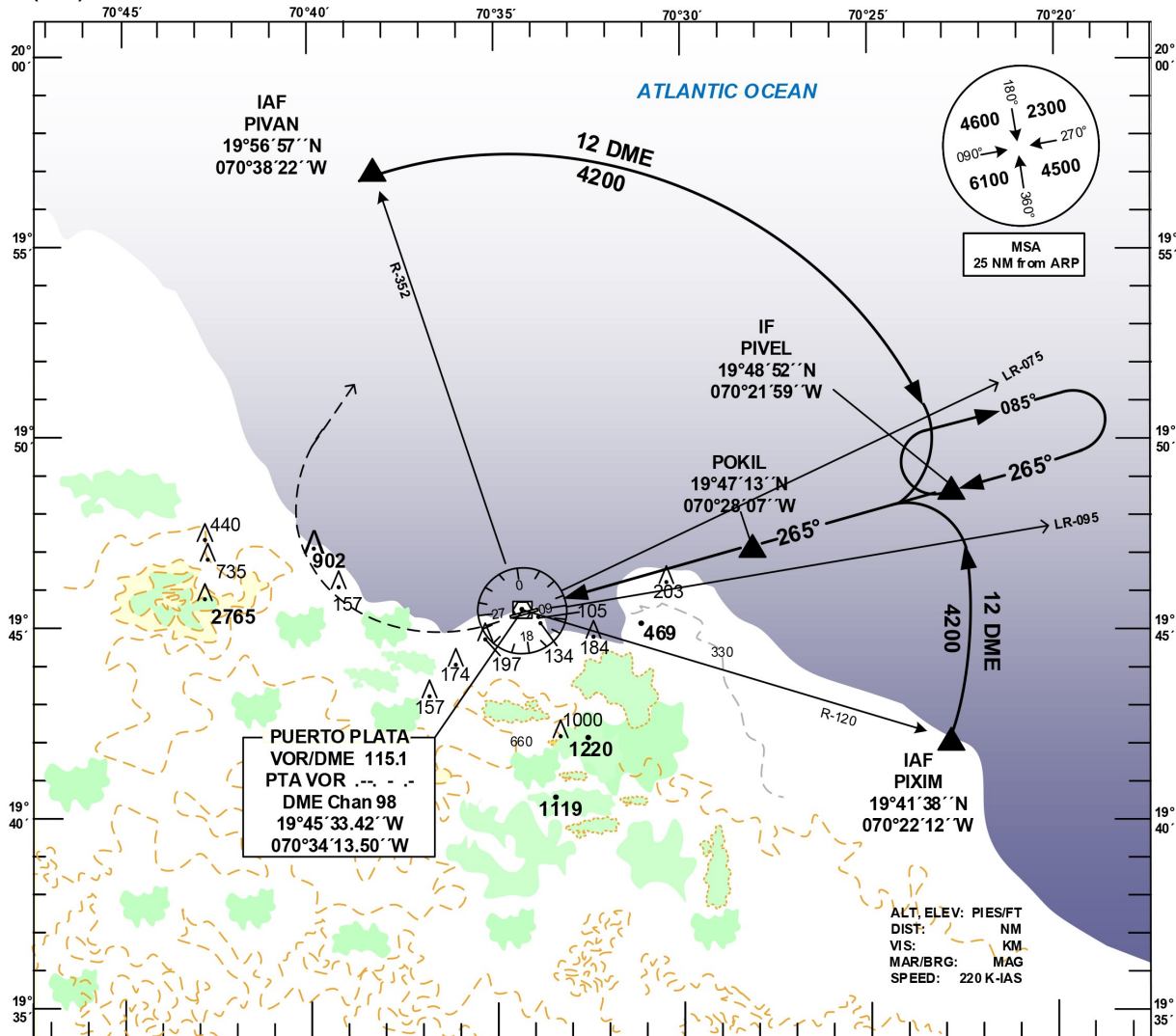


**INSTRUMENT
APPROACH CHART
(IAC)**

TRANSITION		Aerodrome Elevation 17 ft	VAR	Threshold Elevation 17 ft	SANTO DOMINGO CIBAO PUERTO PLATA	ACC 124.300 APP 119.000 TWR 118.000
ALT 17000	LEVEL FL 180					

**PUERTO PLATA
GREGORIO LUPERON INTL
VOR/DME RWY 26**



CAT	S RWY 26		CIRCLING RWY 08	GS (KTS)	80	100	120	140	160	180
	OCA/H, CEILING	VIS								
A	550 (533) 600	1.6	730(713) 800 2.8	FAF-MAPt: MIN/SEG (3.8 NM)	2:51	2:17	1:54	1:38	1:26	1:16
B			790(773) 800 2.8	FAF-THR: MIN/SEG (5.0 NM)	3:45	3:00	2:30	2:08	1:53	1:40
C			920(903) 1000 4.6	ROD: FT / MIN (FAF to MAPt)	439	548	658	767	874	984
D			1300(1283) 1300 4.6	DIST (DME) FAF-MAPt	FAF	5	4	3	MAPt	
				ALTITUD	1800	1471	1142	813	550	

CHANGE: THR 26 GEOGRAPHIC COORDINATES AND ELEVATION.

MDPP VOR/DME RWY 26 PROCEDURE DATA					
PUNTO DE REF/ TERMINAL FIX	GEO. COOD	MARCACION BEARING (TRUE/MAG)	DIST. NM	GRAD. DESC. / SLOPE	
IAF: PIVAN	19°56'56.71''N 070°38'22.33''W	12 DME ARC	19.47	NIL	
IAF: PIXIM	19°41'37.72''N 070°22'12.00''W	12 DME ARC	7.33	NIL	
IF: PIVEL	19°48'52.21''N 070°21'59.44''W	254.07°/265°	6.0	NIL	
FAF: POKIL	19°47'12.92''N 070°28'06.53''W	254.07°/265°	5.2	5.6 %; 3.2°	
MAPt: 2.2 DME PTA	19°46'12.06''N 070°31'59.62''W	254.07°/265°	1.4 THR 26	NIL	
TP	NIL	NIL	NIL	NIL	
MAHF: PIVEL	19°48'52.21''N 070°21'59.44''W	OB: 074.07°/085° IB: 254.07°/265°	NIL	NIL	