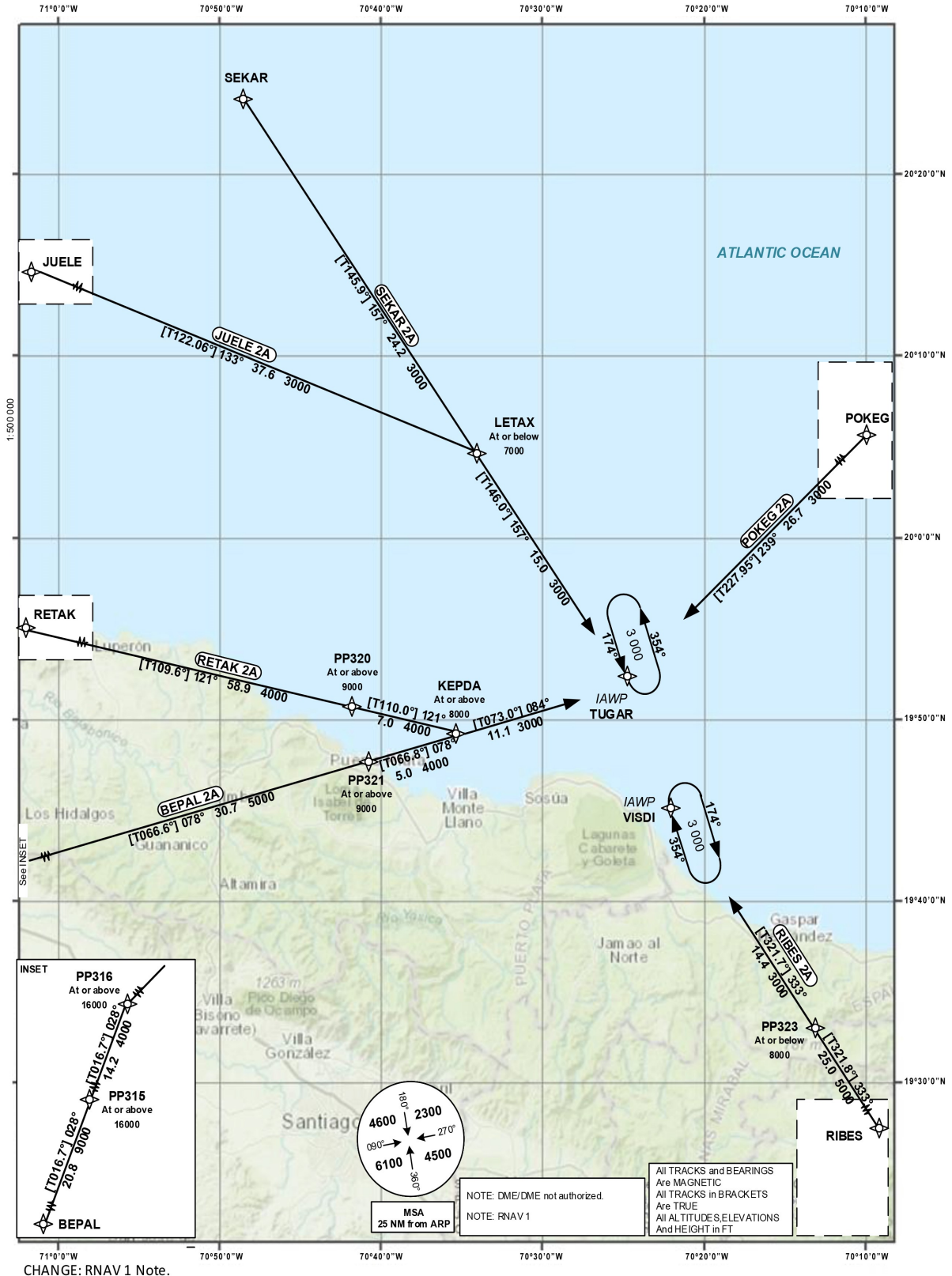


STANDARD ARRIVAL
CHART - INSTRUMENT
(STAR)

TRANSITION		VAR 11W	Aerodrome Elevation 17 ft	SANTO DOMINGO CIBAO PUERTO PLATA	ACC 124.300 APP 119.000 TWR 118.000
ALT 17 000	LEVEL FL 180				

PUERTO PLATA
GREGORIO LUPERON INTL
RNAV (GNSS) RWY 26



STANDARD ARRIVAL
ROUTES-INSTRUMENT
(STAR)

PUERTO PLATA
GREGORIO LUPERON INTL
RNAV (GNSS) RWY 26

Designator	Identification Significant Points	Constraints	MAG (True) Track	Dist NM	MNM IFR Cruising Level	Coordinates
BEPAL 2A	BEPAL TWO ALPHA					
	Δ BEPAL	A16000+; K250-	028 (016.7)	20.8	9000	19°01'23.00"N 071°21'04.00"W
	Δ PP315	A16000+; K250-	028 (016.7)	14.2	4000	19°21'25.40"N 071°14'44.37"W
	Δ PP316	A16000+; K220-; R	078 (066.6)	30.7	5000	19°35'05.55"N 071°10'24.49"W
	Δ PP321	A9000+; K220-	078 (066.8)	5.0	4000	19°47'17.14"N 070°40'28.97"W
	Δ KEPDA	A8000+; K210-; R	084 (073.0)	11.1	3000	19°49'15.66"N 070°35'36.48"W
	Δ TUGAR	A3000+; K210-				19°52'30.31"N 070°24'21.77"W
JUELE 2A	JUELE TWO ALPHA					
	Δ JUELE	A7000+; K250-	133 (122.06)	37.6	3000	20°25'03.50"N 071°07'06.63"W
	Δ LETAX	A7000-; K210-	157 (146.0)	15.0	3000	20°04'59.04"N 070°33'16.43"W
	Δ TUGAR	A3000+; K210-				19°52'30.31"N 070°24'21.77"W
POKEG 2A	POKEG TWO ALPHA					
	Δ POKEG	A8000+; K250-	239 (227.95)	26.7	3000	20°10'30.00"N 070°03'18.00"W
	Δ TUGAR	A3000+; K210-				19°52'30.31"N 070°24'21.77"W
RETAK 2A	RETAK TWO ALPHA					
	Δ RETAK	A9000+; K250-	121 (109.6)	58.9	4000	20°11'42.00"N 071°41'30.00"W
	Δ PP320	A9000+; K220-	121 (110.0)	7.0	4000	19°51'39.72"N 070°42'35.20"W
	Δ KEPDA	A8000+; K210-; L	084 (073.0)	11.1	3000	19°49'15.66"N 070°35'36.48"W
	Δ TUGAR	A3000+; K210-				19°52'30.31"N 070°24'21.77"W
RIBES 2A	RIBES TWO ALPHA					
	Δ RIBES	A8000+; K250-	333 (321.8)	25.0	5000	19°13'48.00"N 069°56'05.00"W
	Δ PP323	A8000-; K220-	333 (321.7)	14.4	3000	19°33'29.68"N 070°12'27.09"W
	Δ VISDI	A3000+; K210-				19°44'49.29"N 070°21'53.84"W
SEKAR 2A	SEKAR TWO ALPHA					
	Δ SEKAR	A7000+; K250-	157 (145.9)	24.2	3000	20°25'00.00"N 070°47'42.00"W
	Δ LETAX	A7000-; K210-	157 (146.0)	15.0	3000	20°04'59.04"N 070°33'16.43"W
	Δ TUGAR	A3000+; K210-				19°52'30.31"N 070°24'21.77"W
DME/DME not authorized.						