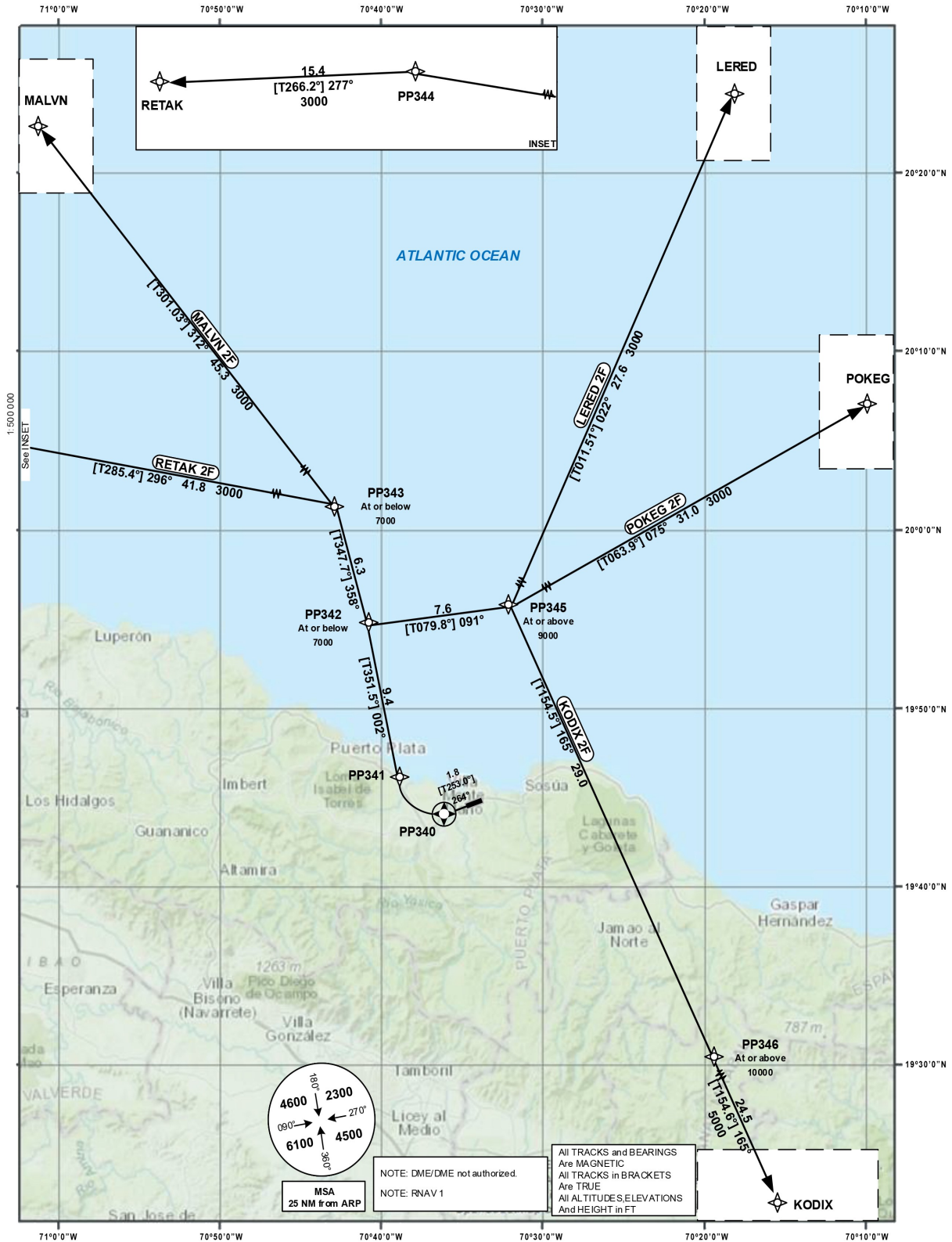


STANDARD DEPARTURE
CHART – INSTRUMENT
(SID)

TRANSITION		VAR 11° W	Aerodrome Elevation 17 ft	SANTO DOMINGO ACC 124.300 CIBAO APP 119.000 PUERTO PLATA TWR 118.000
ALT 17 000	LEVEL FL 180			

PUERTO PLATA
GREGORIO LUPERON INTL
RNAV (GNSS) RWY 26



CHANGE: RNAV 1 Note.

STANDARD DEPARTURE
ROUTES-INSTRUMENT
(SID)

PUERTO PLATA
GREGORIO LUPERON INTL
RNAV (GNSS) RWY 26

Designator	Route	After Take-Off		Remarks	
		Climb to	Contact	Points	Coordinates
1	2	3	4	5	6
LERED 2F*	LERED TWO FOXTROT	7000	Santo Domingo ACC 124.300 ACC 124.600		
	Climb on track 264° to PP340; RT via PP341 on track 002° to PP342; RT on track 091° to PP345; LT on track 022° to LERED. CLIMB WITH 5.3%/320FT PER NM UNTIL PASSING 3000. [A500+] — PP340 [R] — PP341 — PP342 [A7000-; R] — PP345 [A9000+; L] — LERED.			PP340 PP341 PP342 PP345 LERED	19°44'41.60"N 070°36'54.24"W 19°46'09.29"N 070°39'21.22"W 19°55'27.82"N 070°40'49.30"W 19°56'48.79"N 070°32'54.69"W 20°23'54.80"N 070°27'03.50"W
KODIX 2F*	KODIX TWO FOXTROT	7000			
	Climb on track 264° to PP340; RT via PP341 on track 002° to PP342; RT on track 091° to PP345; RT on track 165° via PP346 to KODIX. CLIMB WITH 5.3%/320FT PER NM UNTIL PASSING 3000. [A500+] — PP340 [R] — PP341 — PP342 [A7000-; R] — PP345 [A9000+; R] — PP346 [A10000+;] — KODIX.			PP340 PP341 PP342 PP345 PP346 KODIX	19°44'41.60"N 070°36'54.24"W 19°46'09.29"N 070°39'21.22"W 19°55'27.82"N 070°40'49.30"W 19°56'48.79"N 070°32'54.69"W 19°30'27.18"N 070°19'40.31"W 19°08'12.00"N 070°08'33.00"W
POKEG 2F*	POKEG TWO FOXTROT	7000			
	Climb on track 264° to PP340; RT via PP341 on track 002° to PP342; RT on track 091° to PP345; LT on track 075° to POKEG. CLIMB WITH 5.3%/320FT PER NM UNTIL PASSING 3000. [A500+] — PP340 [R] — PP341 — PP342 [A7000-; R] — PP345 [A9000+; L] — POKEG.			PP340 PP341 PP342 PP345 POKEG	19°44'41.60"N 070°36'54.24"W 19°46'09.29"N 070°39'21.22"W 19°55'27.82"N 070°40'49.30"W 19°56'48.79"N 070°32'54.69"W 20°10'30.00"N 070°03'18.00"W
RETAK 2F*	RETAK TWO FOXTROT	7000			
	Climb on track 264° to PP340; RT via PP341 on track 002° to PP342; LT on track 358° to PP343; LT on track 296° to PP344; LT on track 277° to RETAK. CLIMB WITH 5.3%/320FT PER NM UNTIL PASSING 3000. [A500+] — PP340 [R] — PP341 — PP342 [A7000-; L] — PP343 [A7000-; L] — PP344 [L] — RETAK.		PP340 PP341 PP342 PP343 PP344 RETAK	19°44'41.60"N 070°36'54.24"W 19°46'09.29"N 070°39'21.22"W 19°55'27.82"N 070°40'49.30"W 20°01'38.98"N 070°42'15.23"W 20°12'44.04"N 071°25'07.73"W 20°11'42.00"N 071°41'30.00"W	
MALVN 2F*	MALVN TWO FOXTROT	7000			
	Climb on track 264° to PP340; RT via PP341 on track 002° to PP342; LT on track 358° to PP343; LT on track 312° to MALVN. CLIMB WITH 5.3%/320FT PER NM UNTIL PASSING 3000. [A500+] — PP340 [R] — PP341 — PP342 [A7000-; L] — PP343 [A7000-; L] — MALVN.		PP340 PP341 PP342 PP343 MALVN	19°44'41.60"N 070°36'54.24"W 19°46'09.29"N 070°39'21.22"W 19°55'27.82"N 070°40'49.30"W 20°01'38.98"N 070°42'15.23"W 20°25'00.00"N 071°23'33.67W	
* Procedure Design Gradient due to Obstacles / Terrain. If unable to comply advise ATC prior to start-up and expect RWY08 departure.					