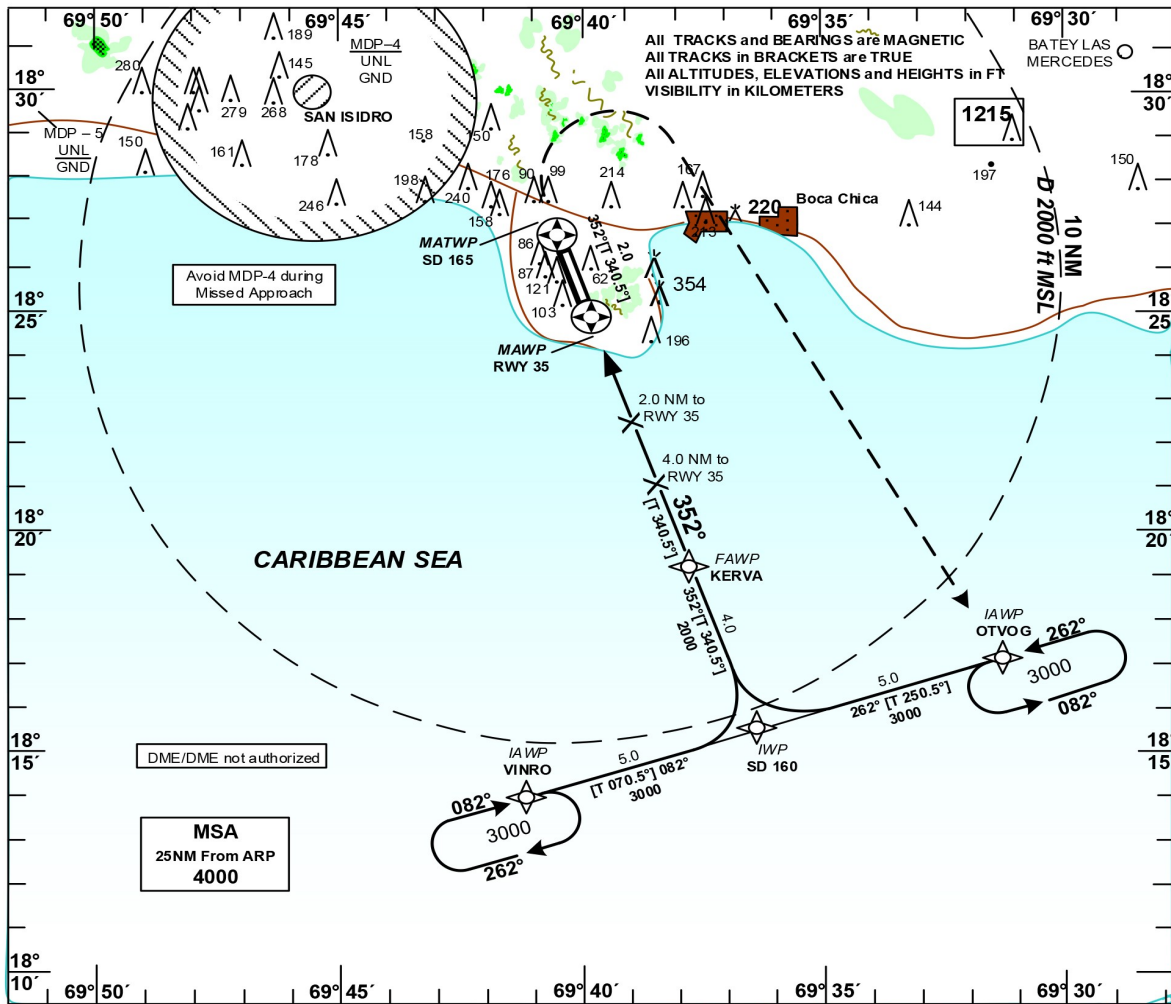


INSTRUMENT APPROACH CHART (IAC)

TRANSITION		Aerodrome	VAR	Threshold	SANTO DOMINGO	ACC 124.300
ALT	LEVEL	Elevation	135°	Elevation	LAS AMERICAS	124.600
17000	FL 180	60 ft		60 ft	LAS AMERICAS	APP 119.300
					LAS AMERICAS	TWR 118.100

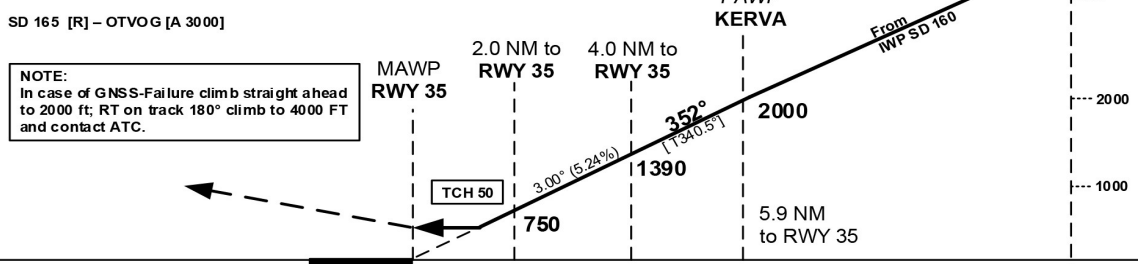
SANTO DOMINGO DE LAS AMERICAS INTL RNAV (GNSS) RWY 35



MISSED APPROACH PROCEDURE RNAV (GNSS)
Climb on track 352° to SD 165; RT Direct to OTVOG to 3000 or in accordance with ATC instructions.

DIST RWY 35	2	3	4	5			
ALTITUDE	750	1070	1390	1700			

NOTE:
In case of GNSS-Failure climb straight ahead to 2000 ft; RT on track 180° climb to 4000 FT and contact ATC.



OCA/H, Ceiling and Visibility Minimums	A	B	C	D
CAT	A	B	C	D
OCA (OCH)	510 (450)	510 (450)	510 (450)	510 (450)
CEILING	500	500	500	500
VISIBILITY	1.2	1.2	1.9	1.9

GS	kt	80	100	120	140	160	180
KERVA - RWY 35 (5.9 NM)	MIN:SEC	4:26	3:32	2:57	2:32	2:13	1:58
Rate of descent (5.24%)	ft / MIN	420	530	640	740	850	960

LAST CHANGES: CEILING AND VISIBILITY MINIMUMS.

AEROPUERTO INT'L "LAS AMÉRICAS", SANTO DOMINGO, R.D. "LAS AMÉRICAS" INT'L AIRPORT, SANTO DOMINGO, R.D. MDSB RNAV (GNSS) RWY 35		
IDENT	LAT	LOG
OTVOG (IAWP)	18°17'11.06" N	069°31'22.73" W
VINRO (IAWP)	18°13'49.99" N	069°41'17.04" W
SD160 (IWP)	18°15'30.59" N	069°36'19.93" W
KERVA (FAWP)	18°19'17.74" N	069°37'44.06" W
THR 35 (MAWP)	18°24'55.30" N	069°39'49.25" W
SD165 (MATWP)	18°26'48.87" N	069°40'31.36" W