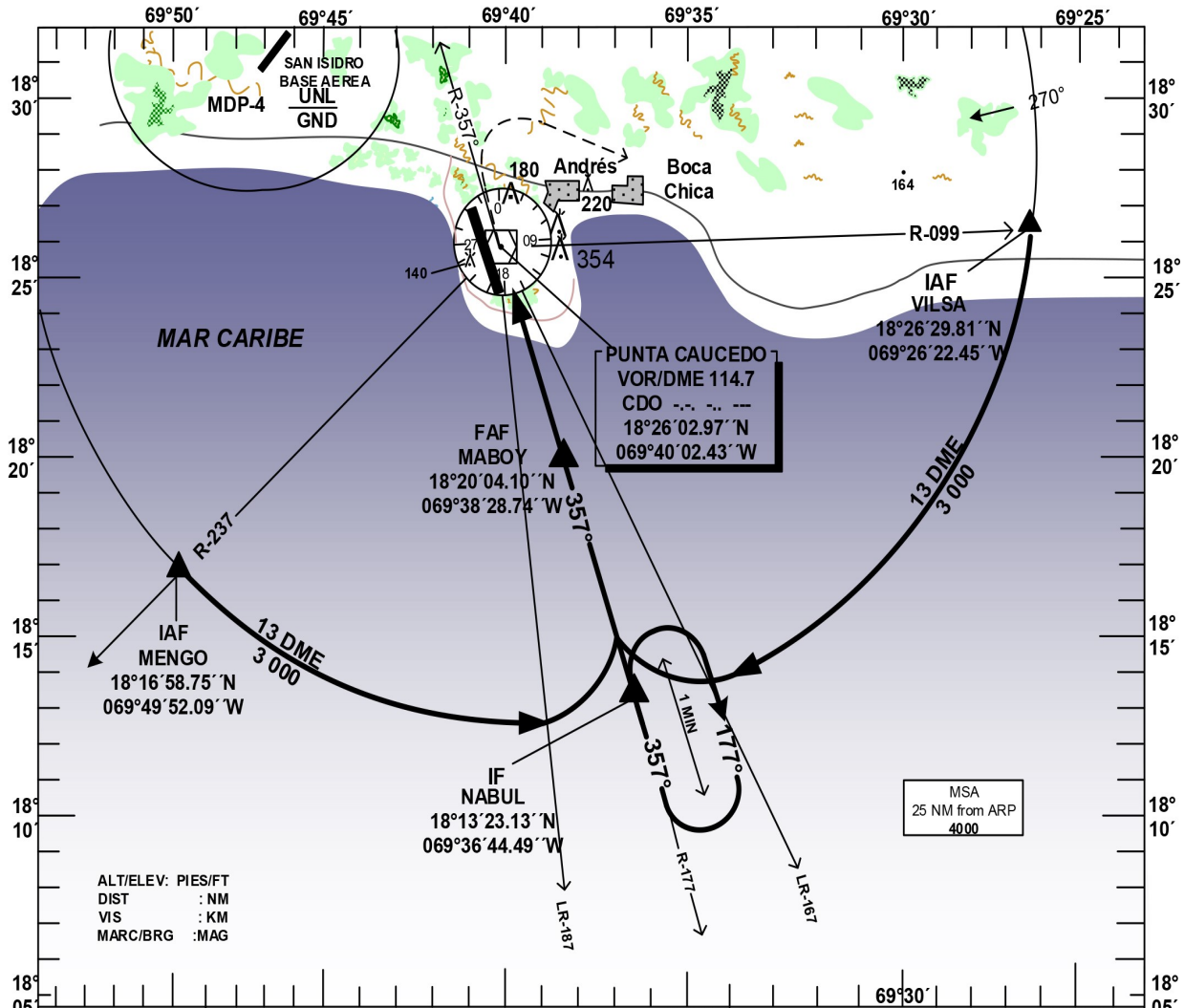


**INSTRUMENT APPROACH CHART (IAC)**

TRANSITION		Aerodrome	VAR	Threshold	SANTO DOMINGO	
ALT	LEVEL	Elevation		Elevation	ACC	124.300
17000	FL 180	60 ft	VAR 001°	60 ft	124.600	
					APP	119.300
					TWR	118.100

**SANTO DOMINGO DE LAS AMERICAS INTL VOR/DME RWY 35**

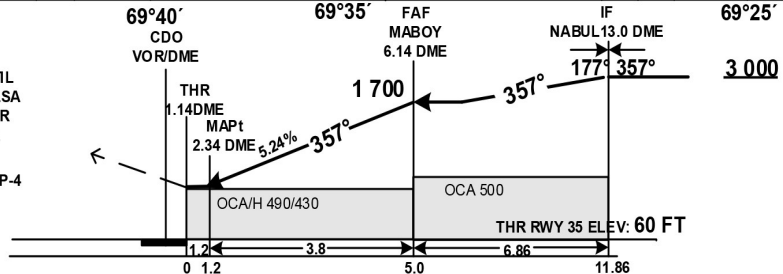


ALT/ELEV: PIES/FT  
DIST : NM  
VIS : KM  
MARC/BRG :MAG

**MISSED APPROACH**

CLIMB ON CDO VOR/DME RDL-357 UNTIL 2 000 FT, THEN RIGHT TURN DCT TO VILSA VIA RDL-099, CLIMBING TO 3 000 FT OR ACCORDING TO ATC INSTRUCTIONS.

NOTE: AVOID PROHIBITED AREA MDP-4 AT 4 NM NW OF CDO VOR/DME



CAT	S RWY 35		CIRCLING RWY 17	GS (KTS)	80	100	120	140	160	180
	OCA/H, CEILING	VIS								
A	490 (430) 500	1.6 2.0 2.4	700 (640) 700 2.8 800 (740) 800 4.6	FAF-MAPt : MIN/SEG (3.8 NM)	2:51	2:17	1:54	1:38	1:26	1:16
B				FAF-THR: MIN/SEG (5.0 NM)	3:45	3:00	2:30	2:08	1:53	1:40
C				ROD : FT / MIN (FAF to MAPt)	425	531	637	742	846	953
D				DIST (DME) FAF-MAPt	FAF	6	5	4	3	MAPt
				ALTITUD	1 700	1 668	1 350	1 032	714	490

LAST CHANGES: FIX MABOY ADDED TO PLAIN VIEW

<b>MDSB VOR/DME RWY 35 PROCEDURE DATA</b>					
<b>PUNTO DE REF/ TERMINAL FIX</b>		<b>GEO. COOD</b>	<b>MARCACION/ BEARING (TRUE/MAG)</b>	<b>DIST. NM</b>	<b>GRAD. DESC. / SLOPE</b>
IAF:	VILSA	18°26'29.81''N 069°26'22.45''W	13 DME ARC	17.70 NM	NIL
IAF:	MENGO	18°16'58.75''N 069°49'52.09''W	13 DME ARC	13.61 NM	NIL
IF:	NABUL	18°13'23.13''N 069°36'44.49''W	346.06°/357°	6.86 NM	NIL
FAF:	MABOY	18°20'04.10''N 069°38'28.74''W	346.06°/357°	3.8 NM	5.24 %; 3.0°
MAPt:	2.34 DME CDO	18°23'46.20''N 069°39'26.71''W	346.06°/357°	1.2 NM THR 35	NIL
TP		NIL	NIL	NIL	NIL
MAHF:	NABUL	18°13'23.13''N 069°36'44.49''W	IB: 346.06°/357° OB: 166.06°/117°	13 DME CDO	NIL