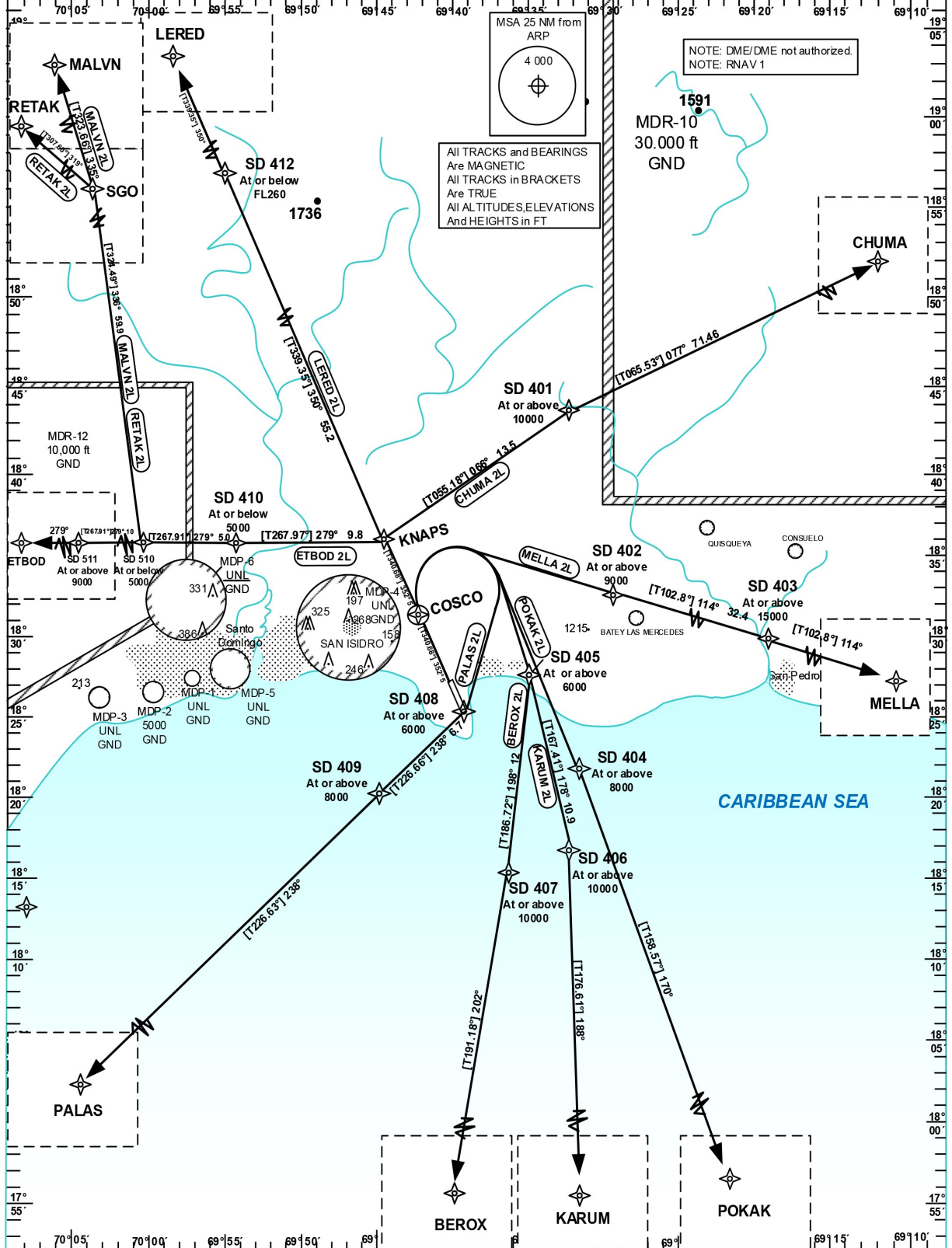


STANDARD DEPARTURE CHART-  
INSTRUMENT  
(SID)

TRANSITION		Aerodrome Elevation 60 ft	VAR N 0.1 V	SANTO DOMINGO ACC 124.300	
ALT 17000	LEVEL FL 180			LAS AMERICAS APP 119.300	LAS AMERICAS TWR 118.100

SANTO DOMINGO  
DE LAS AMERICAS INTL  
JOSÉ FRANCISCO PEÑA GÓMEZ  
RNAV (GNSS) RWY 35



CHANGE: ETBOD2L departure restrictions.

STANDARD DEPARTURE  
ROUTES-INSTRUMENT  
(SID)

SANTO DOMINGO  
DE LAS AMÉRICAS INTL  
JOSÉ FRANCISCO PEÑA GÓMEZ  
RNAV (GNSS) RWY 35

Designator	Route	After Take-Off		Remarks			
		Climb to	Contact	Point	Coordinates		
1	2	3	4	5	6		
<b>RETAK 2L</b>	<b>RETAK TWO LIMA</b> Climb on track 352° to KNAPS; LT via SD410 on track 279° to SD510; RT on track 336° to SGO; LT on track 319° to RETAK (Δ).  [A500+] — KNAPS [L] — SD410 [A5000-] — SD510 [A5000-;R] — SGO [L] — RETAK	5000	Santo Domingo ACC 124.300 ACC 124.600	KNAPS SD410 SD510 SGO RETAK	18°36'06.66"N 069°43'56.04"W 18°35'45.59"N 069°54'11.39"W 18°35'34.53"N 069°59'27.02"W 19°24'26.34"N 070°36'13.70"W 20°11'42.00"N 071°41'30.00"W		
<b>MALVN 2L</b>	<b>MALVN TWO LIMA</b> Climb on track 352° to KNAPS; LT via SD410 on track 279° to SD510; RT on track 336° to SGO; LT on track 335° to MALVN (Δ).  [A500+] — KNAPS [L] — SD410[A5000-] — SD510 [A5000-;R] — SGO [L] — MALVN					KNAPS SD410 SD510 SGO MALVN	18°36'06.66"N 069°43'56.04"W 18°35'45.59"N 069°54'11.39"W 18°35'34.53"N 069°59'27.02"W 19°24'26.34"N 070°36'13.70"W 20°25'00.00"N 071°23'33.67"W
<b>LERED 2L</b>	<b>LERED TWO LIMA</b> Climb on track 352° via KNAPS and SD412 to LERED (Δ).  [A500+] — KNAPS [R] — SD412 [FL260-] — LERED	Continuous Climb		KNAPS SD412 LERED	18°36'06.66"N 069°43'56.04"W 19°27'53.75"N 070°04'30.93"W 20°23'54.80"N 070°27'03.50"W		
<b>CHUMA 2L</b>	<b>CHUMA TWO LIMA</b> Climb on track 352° to KNAPS; RT to track 066° to SD401; RT on track 077° to CHUMA (Δ).  [A500+] — KNAPS [R] — SD401[A10000+;R] — CHUMA					KNAPS SD401 CHUMA	18°36'06.66"N 069°43'56.04"W 18°43'49.87"N 069°32'16.51"W 19°13'20.40"N 068°23'32.40"W
<b>ETBOD 2L</b>	<b>ETBOD TWO LIMA</b> Climb on track 352° to KNAPS; LT via SD410, SD510 and SD511 on track 279° to ETBOD (Δ).  [A500+] — KNAPS [L] — SD410 [A5000-] — SD510 [A5000-] — SD511 [A9000+] — ETBOD					5000	
<b>MELLA 2L</b>	<b>MELLA TWO LIMA</b> Climb on track 352° to COSCO; RT direct to SD402; via SD403 on track 114° to MELLA (Δ).  [A500+] — COSCO [R] — SD402 [A9000+] — SD403 [A15000+] — MELLA	Continuous Climb		COSCO SD402 SD403 MELLA	18°31'22.47"N 069°42'11.49"W 18°32'47.70"N 069°29'33.66"W 18°25'32.95"N 068°56'22.42"W 18°13'00.00"N 068°00'00.00"W		
<b>POKAK 2L</b>	<b>POKAK TWO LIMA</b> Climb on track 352° to COSCO; RT direct to SD404; on track 170° to POKAK (Δ).  [A500+] — COSCO [R] — SD404 [A8000+] — POKAK					COSCO SD404 POKAK	18°31'22.47"N 069°42'11.49"W 18°21'50.60"N 069°31'29.44"W 16°00'00.00"N 068°34'00.00"W
<b>KARUM 2L</b>	<b>KARUM TWO LIMA</b> Climb on track 352° to COSCO; RT direct to SD405; on track 178° to SD406; RT on track 188° to KARUM (Δ).  [A500+] — COSCO [R] — SD405 [A6000+] — SD406 [A10000+; R] — KARUM					COSCO SD405 SD406 KARUM	18°31'22.47"N 069°42'11.49"W 18°27'29.22"N 069°34'51.35"W 18°16'50.90"N 069°32'22.16"W 16°00'00.00"N 069°24'00.00"W
<b>BEROX 2L</b>	<b>BEROX TWO LIMA</b> Climb on track 352° to COSCO; RT direct to SD405; on track 198° to SD407; RT on track 202° to BEROX (Δ).  [A500+] — COSCO [R] — SD405 [A6000+] — SD407 [A10000+; R] — BEROX					COSCO SD405 SD407 BEROX	18°31'22.47"N 069°42'11.49"W 18°27'29.22"N 069°34'51.35"W 18°15'30.59"N 069°36'19.93"W 16°00'00.00"N 070°04'00.00"W
<b>PALAS 2L</b>	<b>PALAS TWO LIMA</b> Climb on track 352° to COSCO; RT direct to SD408; via SD409 on track 238° to PALAS (Δ).  [A500+] — COSCO [R] — SD408 [A6000+] — SD409 [A8000+] — PALAS			COSCO SD408 SD409 PALAS	18°31'22.47"N 069°42'11.49"W 18°24'55.31"N 069°39'49.22"W 18°20'17.96"N 069°44'56.91"W 16°34'00.00"N 071°41'00.00"W		