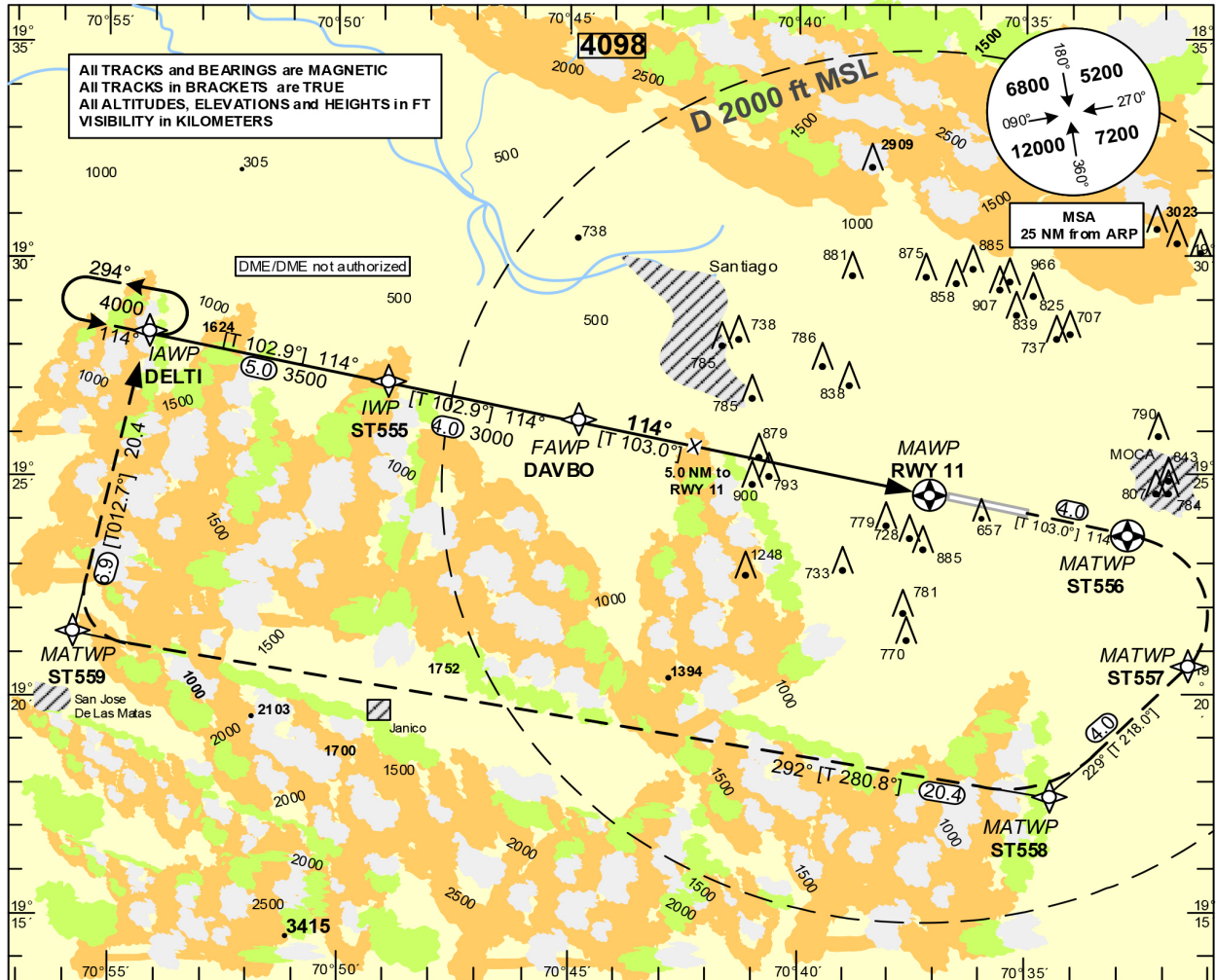


**INSTRUMENT
APPROACH
CHART – (IAC)**

TRANSITION		Aerodrome	VAR	Threshold	SANTO DOMINGO	ACC 124.300
ALT	LEVEL	Elevation		Elevation	CIBAO	APP 119.000
17000	FL 180	567 ft		565 ft	SANTIAGO	TWR 118.300

**SANTIAGO
DEL CIBAO INTL
RNAV (GNSS) RWY 11**

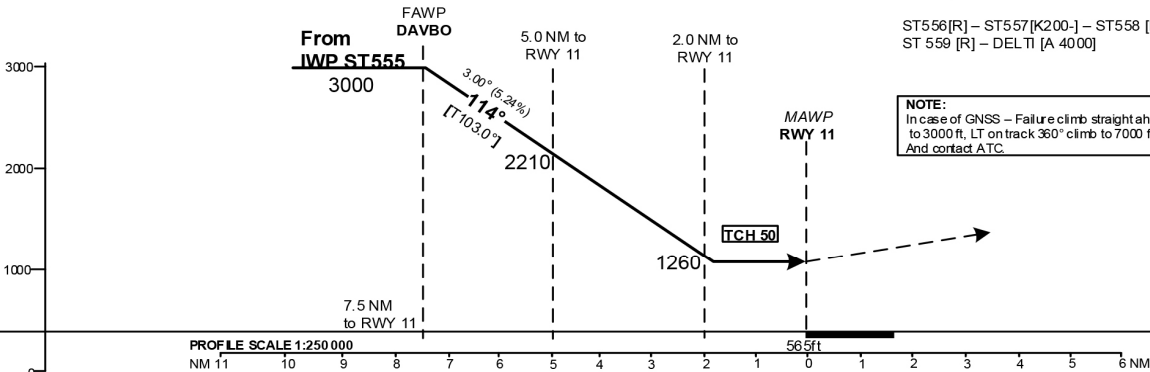


DIST RWY 11	7	6	5	4	3	2		
ALTITUDE	2850	2530	2210	1890	1580	1260		

**MISSED APPROACH PROCEDURE
RNAV (GNSS)**
Climb on track 114° to ST 556; RT via ST557
On track 229° to ST558; RT, on track 292° to
ST 559; RT, on track 024° to DELTI to 4000

ST556[R] – ST557[K200-] – ST558 [R] –
ST 559 [R] – DELTI [A 4000]

NOTE:
In case of GNSS – Failure climb straight ahead
to 3000 ft, LT on track 360° climb to 7000 ft
And contact ATC.



OCA/H Ceiling and Visibility Minimums

CAT	A	B	C	D
OCA(OCH)	1200 (635)	1200 (635)	1200 (635)	1200 (635)
CEILING	700	700	700	700
VISIBILITY	1.6	1.6	2.4	2.7

Timing not authorized for defining the MAWP.

GS	Kt	80	100	120	140	160	180
DAVBO – RWY11 (7.5 NM)	MIN:SEC	5:38	4:40	3:35	3:13	2:49	2:30
Rate of descent (5.24%)	Ft/ min	420	530	640	740	850	960

CHANGE: MSA AND OCH VALUES.