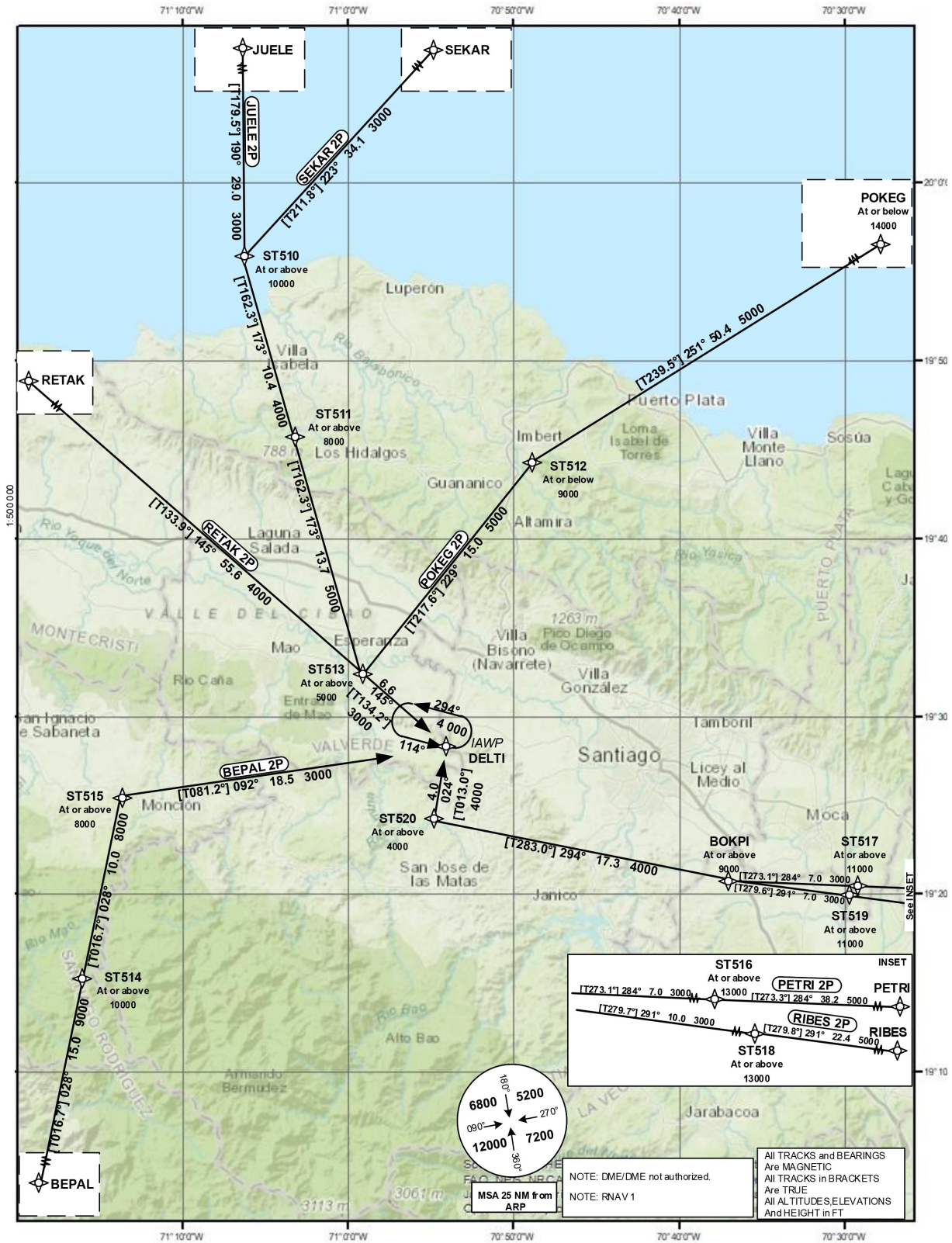


STANDARD ARRIVAL
CHART-INSTRUMENT
(STAR)

TRANSITION		Aerodrome Elevation 567 ft	VAR M 11	SANTO DOMINGO CIBAO SANTIAGO	ACC 124.300 APP 119.000 TWR 118.300
ALT	LEVEL FL 180				

SANTIAGO
DEL CIBAO INTL
RNAV (GNSS) RWY 11



CHANGE: RNAV 1 Note.

STANDARD ARRIVAL ROUTES INSTRUMENT (STAR)				SANTIAGO CIBAO INTL RNAV (GNSS) RWY 11		
Designator	Identification Significant Points	Constraints	MAG (True) Track	Dist NM	MNM IFR Cruising Level	Remarks
BEPAL 2P	BEPAL TWO PAPA					
	Δ BEPAL	A10000+;K250+	028(016.7)	15.0	9000	19°01'23.00"N 071°21'04.00"W
	Δ ST514	A10000+;K250-	028(016.7)	10.0	8000	19°15'49.03"N 071°16'30.74"W
	Δ ST515	A8000+;K220-;R	092(081.2)	18.5	3000	19°25'25.86"N 071°13'28.26"W
	Δ DELTI	A4000+;K210-				19°28'14.80"N 070°54'03.90"W
PETRI 2P	PETRI TWO PAPA					
	Δ PETRI	A13000+;K250+	284(273.3)	38.2	5000	19°16'06.00"N 069°42'30.00"W
	Δ ST516	A13000+;K220-	284(273.1)	7.0	3000	19°19'41.50"N 070°22'24.52"W
	Δ ST517	A11000+;K210-	284(273.1)	7.0	3000	19°20'04.23"N 070°29'48.00"W
	Δ BOKPI	A9000+;K210-;R	294(283.0)	17.3	4000	19°20'26.65"N 070°37'11.52"W
	Δ ST520	A4000+;K210-;R	024(013.0)	4.0	4000	19°24'19.97"N 070°55'00.60"W
	Δ DELTI	A4000+;K210-				19°28'14.80"N 070°54'03.90"W
RETAK 2P	RETAK TWO PAPA					
	Δ RETAK	A9000+;K250+	145(133.9)	55.6	4000	20°11'42.00"N 071°41'30.00"W
	Δ ST513	A5000+;K220-	145(134.2)	6.6	3000	19°32'51.54"N 070°59'04.11"W
	Δ DELTI	A4000+;K210-				19°28'14.80"N 070°54'03.90"W
RIBES 2P	RIBES TWO PAPA					
	Δ RIBES	A13000+;K250+	291(279.8)	22.4	5000	19°13'48.00"N 069°56'05.00"W
	Δ ST518	A13000+;K220-	291(279.7)	10.0	3000	19°17'35.60"N 070°19'28.18"W
	Δ ST519	A11000+;K210-	291(279.6)	7.0	3000	19°19'16.44"N 070°29'53.60"W
	Δ BOKPI	A9000+;K210-;R	294(283.0)	17.3	4000	19°20'26.65"N 070°37'11.52"W
	Δ ST520	A4000+;K210-;R	024(013.0)	4.0	4000	19°24'19.97"N 070°55'00.60"W
	Δ DELTI	A4000+;K210-				19°28'14.80"N 070°54'03.90"W
SEKAR 2P	SEKAR TWO PAPA					
	Δ SEKAR	A10000+;K250+	223(211.8)	34.1	3000	20°25'00.00"N 070°47'42.00"W
	Δ ST510	A10000+;K220-;L	173(162.3)	10.4	4000	19°55'57.65"N 071°06'49.47"W
	Δ ST511	A8000+;K220-	173(162.3)	13.7	5000	19°45'59.47"N 071°03'28.35"W
	Δ ST513	A5000+;K210-;L	145(134.2)	6.6	3000	19°32'51.54"N 070°59'04.11"W
	Δ DELTI	A4000+;K210-				19°28'14.80"N 070°54'03.90"W
JUELE 2P	JUELE TWO PAPA					
	Δ JUELE	A10000+;K250+	190(179.5)	29.0	3000	20°25'03.50"N 071°07'06.63"W
	Δ ST510	A10000+;K220-;L	173(162.3)	10.4	4000	19°55'57.65"N 071°06'49.47"W
	Δ ST511	A8000+;K220-	173(162.3)	13.7	5000	19°45'59.47"N 071°03'28.35"W
	Δ ST513	A5000+;K210-;L	145(134.2)	6.6	3000	19°32'51.54"N 070°59'04.11"W
	Δ DELTI	A4000+;K210-				19°28'14.80"N 070°54'03.90"W
POKEG 2P	POKEG TWO PAPA					
	Δ POKEG	A14000-;K250+	251(239.6)	50.4	5000	20°10'30.00"N 070°03'18.00"W
	Δ ST512	A9000-;K220-;L	229(217.6)	15.0	5000	19°44'48.00"N 070°49'23.25"W
	Δ ST513	A5000+;K210-;L	145(134.2)	6.6	3000	19°32'51.54"N 070°59'04.11"W
	Δ DELTI	A4000+;K210-				19°28'14.80"N 070°54'03.90"W

DME/DME not authorized.