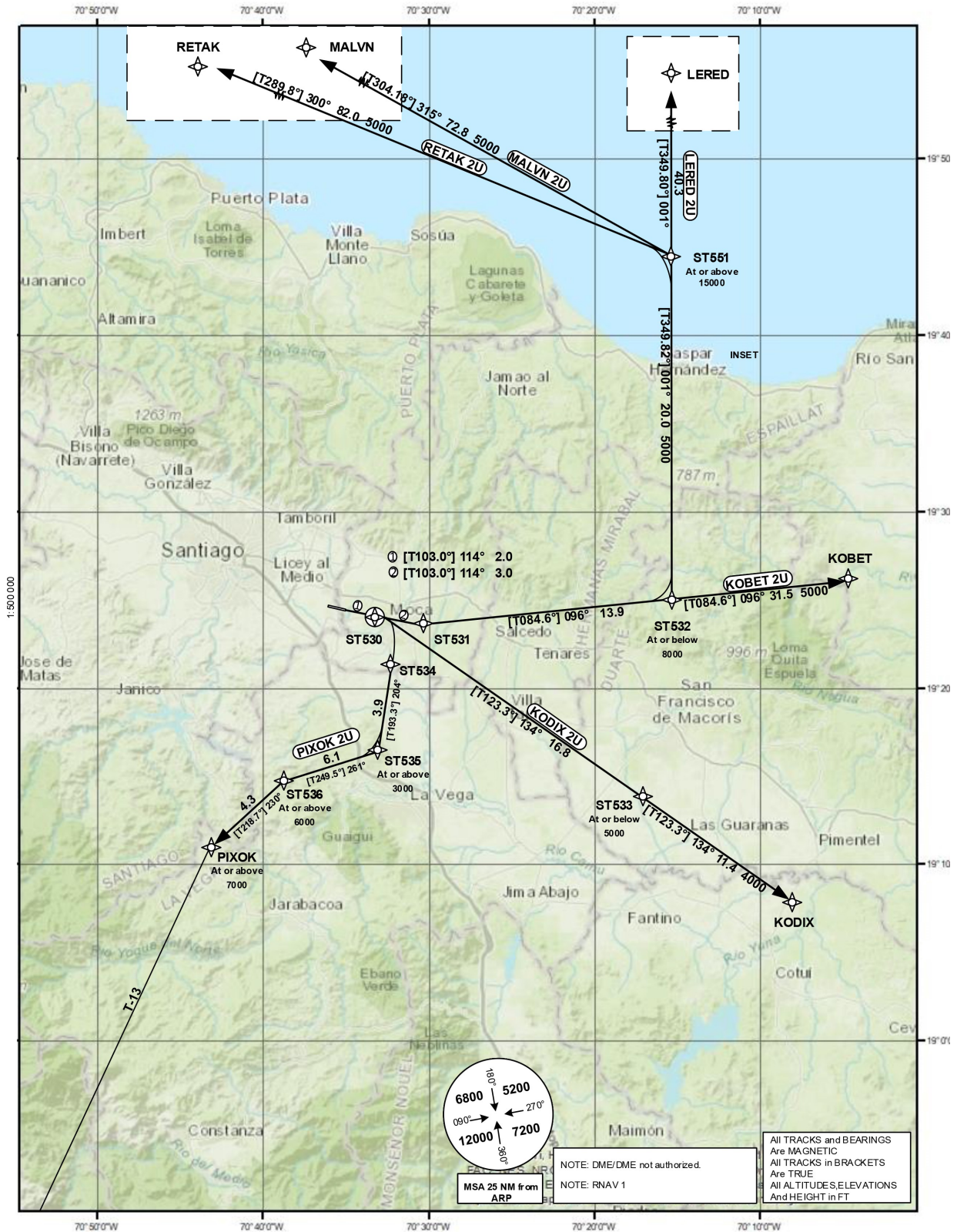


STANDARD DEPARTURE
CHART-INSTRUMENT
(SID)

TRANSITION		Aerodrome Elevation 567 ft	VAR	SANTO DOMINGO CIBAO SANTIAGO	ACC 124.300 APP 119.000 TWR 118.300
ALT 17000	LEVEL FL 180				

SANTIAGO
DEL CIBAO INTL
RNAV (GNSS) RWY 11



CHANGE: RNAV 1 Note.

STANDARD DEPARTURE
ROUTES-INSTRUMENT
(SID)

SANTIAGO
CIBAO INTL
RNAV (GNSS) RWY 11

Designator	Route	After Take-Off		Remarks	
		Climb to	Contact	Points	Coordinates
1	2	3	4	5	6
LERED 2U*	LERED TWO UNIFORM	8000	Santo Domingo ACC 124.300 ACC 124.600	ST531 ST532 ST551 LERED	19°23'04.37"N 070°30'23.37"W 19°24'23.43"N 070°15'43.39"W 19°44'09.01"N 070°19'28.11"W 20°23'54.80"N 070°27'03.50"W
	Climb on track 114° to ST531; LT on track 096° to ST532; LT on track 001° via ST551 to LERED. CLIMB WITH 5.0%/300FT PER NM UNTIL PASSING 3000. [A1000+] — ST531 [L] — ST532 [A8000-; L] — ST551 [A15000+] — LERED.				
MALVN 2U*	MALVN TWO UNIFORM	8000		ST531 ST532 ST551 MALVN	19°23'04.37"N 070°30'23.37"W 19°24'23.43"N 070°15'43.39"W 19°44'09.01"N 070°19'28.11"W 20°25'00.00"N 071°23'33.67"W
	Climb on track 114° to ST531; LT on track 096° to ST532; LT on track 001° to ST551; LT on track 315° to MALVN. CLIMB WITH 5.0%/300FT PER NM UNTIL PASSING 3000. [A1000+] — ST531 [L] — ST532 [A8000-; L] — ST551 [A15000+; L] — MALVN.				
KODIX 2U*	KODIX TWO UNIFORM	5000		ST530 ST533 KODIX	19°23'45.14"N 070°33'29.12"W 19°14'30.00"N 070°18'38.74"W 19°08'11.00"N 070°08'33.00"W
	Climb on track 114° to ST530; RT on track 134° via ST533 to KODIX. CLIMB WITH 5.0%/300FT PER NM UNTIL PASSING 3000. [A1000+] — ST530 [R] — ST533 [A5000-] — KODIX.				
KOBET 2U*	KOBET TWO UNIFORM	8000		ST531 ST532 KOBET	19°23'04.37"N 070°30'23.37"W 19°24'23.43"N 070°15'43.39"W 19°27'30.00"N 069°43'04.00"W
	Climb on track 114° to ST531; LT on track 096° via ST532 to KOBET. CLIMB WITH 5.0%/300FT PER NM UNTIL PASSING 3000. [A1000+] — ST531 [L] — ST532 [A8000-] — KOBET.				
RETAK 2U*	RETAK TWO UNIFORM	8000		ST531 ST532 ST551 RETAK	19°23'04.37"N 070°30'23.37"W 19°24'23.43"N 070°15'43.39"W 19°44'09.01"N 070°19'28.11"W 20°11'42.00"N 071°41'30.00"W
	Climb on track 114° to ST531; LT on track 096° to ST532; LT on track 001° to ST551; LT on track 300° to RETAK. CLIMB WITH 5.0%/300FT PER NM UNTIL PASSING 3000. [A1000+] — ST531 [L] — ST532 [A8000-; L] — ST551 [A15000+; L] — RETAK.				
PIXOK 2U*	PIXOK TWO UNIFORM	3000		ST530 ST534 ST535 ST536 PIXOK	19°23'45.14"N 070°33'29.12"W 19°21'33.15"N 070°32'02.47"W 19°17'42.79"N 070°32'59.77"W 19°15'35.02"N 070°38'59.83"W 19°12'11.13"N 070°41'51.66"W
	Climb on track 114° to ST530; RT via ST534 on track 204° to ST535; RT on track 261° to ST536; LT on track 230° to PIXOK. CLIMB WITH 5.0%/300FT PER NM UNTIL PASSING 3000. [A1000+] — ST530 [R] — ST534 — ST535 [A3000+;R] — ST536 [A6000+; L] — PIXOK [A7000+].				
*Procedure Design Gradient due to Obstacles / Terrain. If unable to comply advise ATC prior to start-up.					
DME/DME NOT AUTHORIZED.					