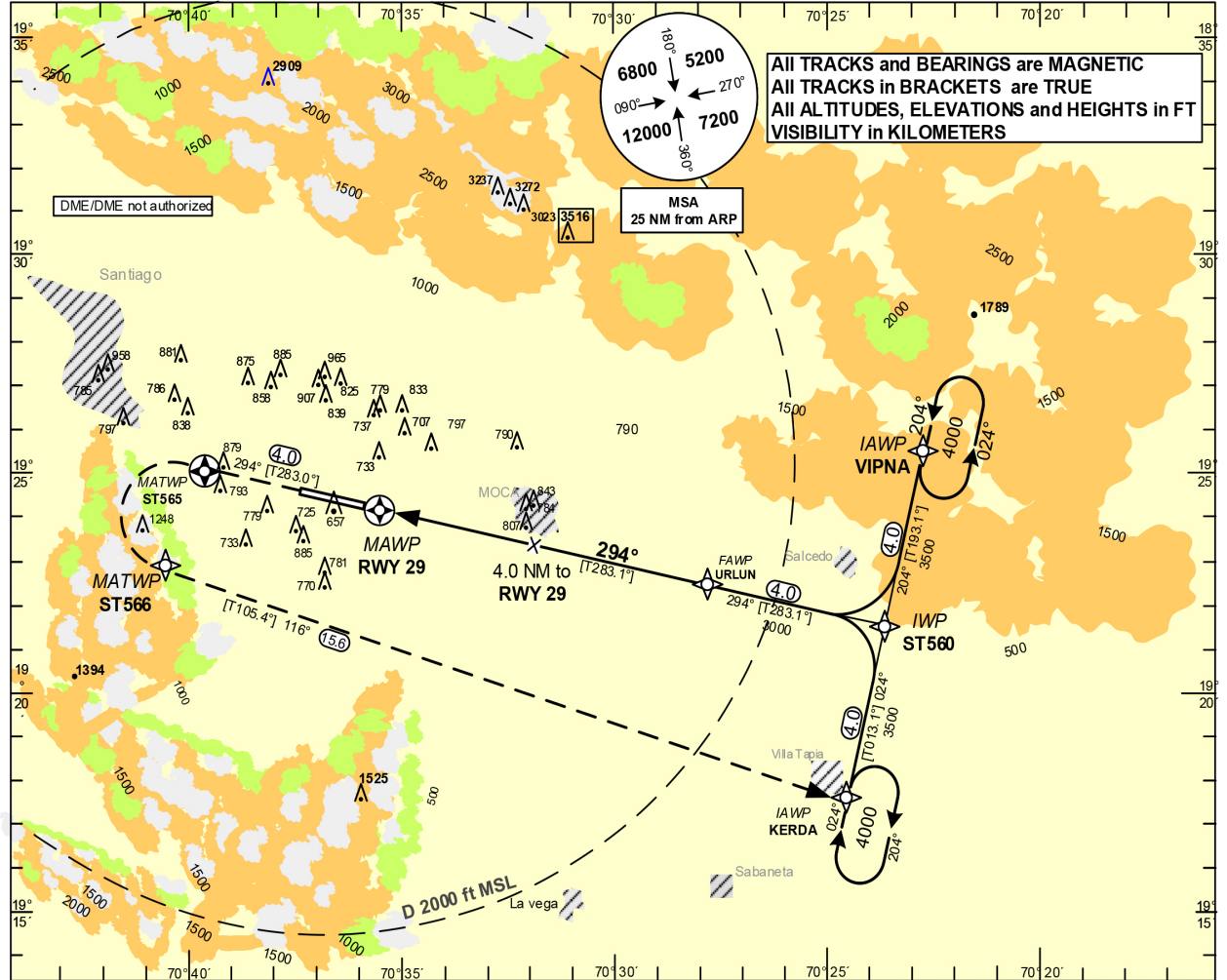


**INSTRUMENT
APPROACH CHART
(IAC)**

TRANSITION		Aerodrome	VAR	Threshold	SANTO DOMINGO	ACC 124.300
ALT 17000	LEVEL FL 180	Elevation 567 ft	$M \pm 11.4^\circ$	Elevation 556 ft	CIBAO SANTIAGO	APP 119.000 TWR 118.300

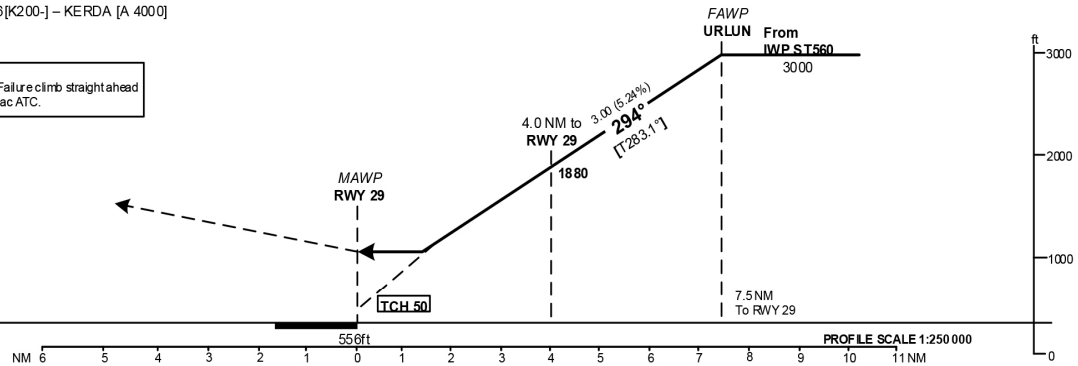
**SANTIAGO
DEL CIBAO INTL
RNAV (GNSS) RWY 29**



**MISSED APPROACH PROCEDURE
RNAV (GNSS)**
Climb on track 294° to ST 565; LT via ST566
On track 116° to KERDA to 4000
ST565[L] – ST566[K200] – KERDA [A 4000]

DIST RWY 29	2	3	4	5	6	7		
ALTITUDE	1240	1560	1880	2200	2520	2830		

NOTE:
In case of GNSS – Failure climb straight ahead to 7000ft, and contact ATC.



OCA/H Ceiling and Visibility Minimums

CAT	A	B	C	D
OCA(OCH)	1060 (504)	1060 (504)	1060 (504)	1060 (504)
CEILING	600	600	600	600
VISIBILITY	1.6	1.6	2.3	2.3

Timing not authorized for defining the MAWP.

GS	Kt	80	100	120	140	160	180
URLUN – RWY29 (7.5 NM)	MIN:SEC	5:38	4:30	3:45	3:13	2:49	2:30
Rate of descent (5.24%)	Ft/ min	420	530	640	740	850	960

CHANGE: MSA AND OCH VALUES.