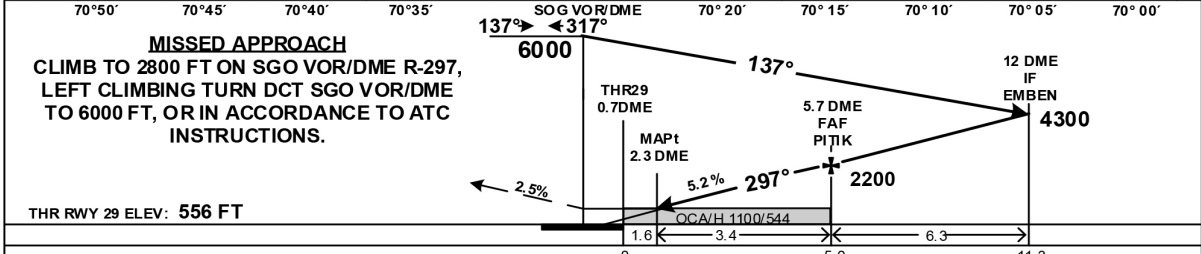
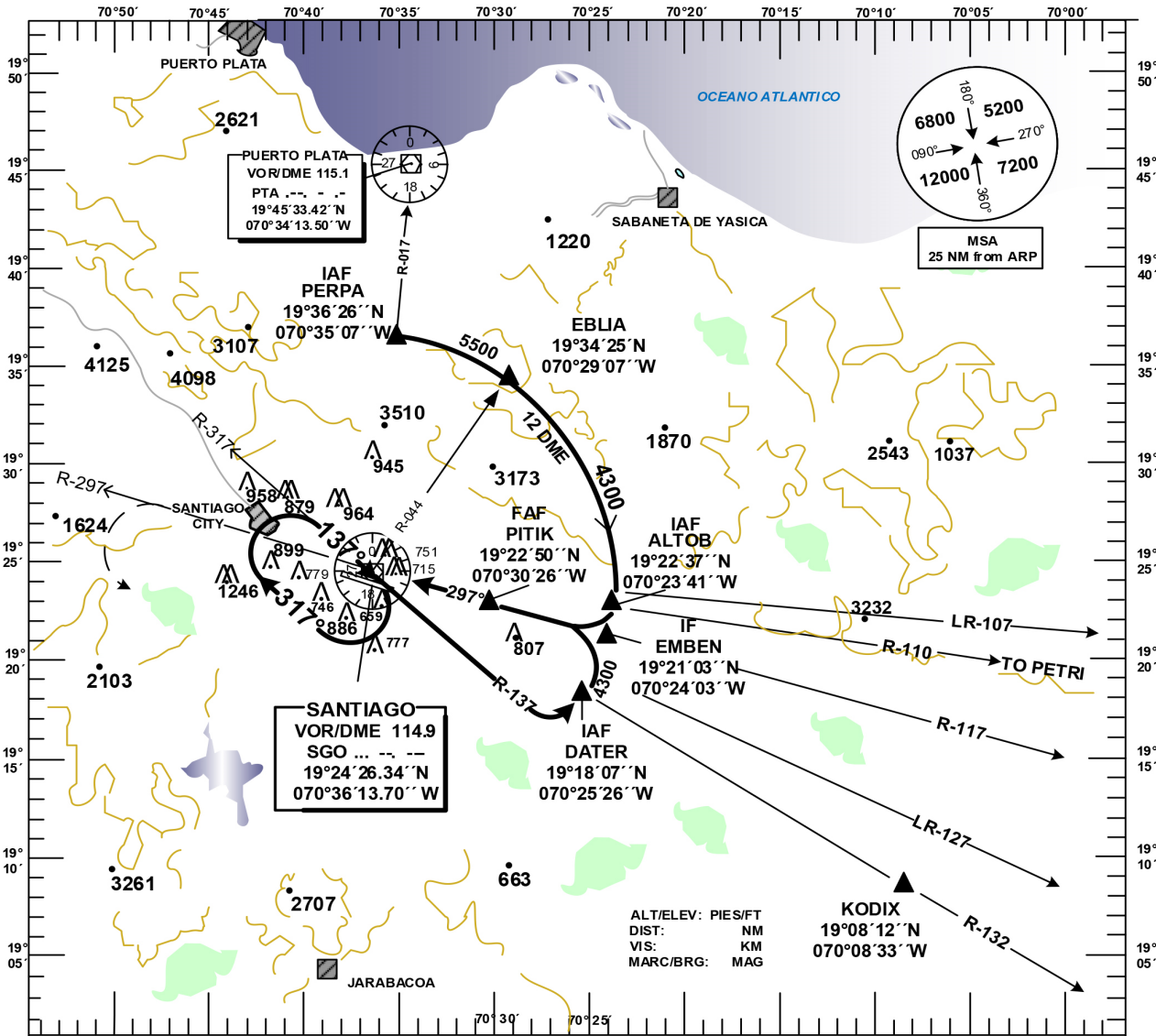


**INSTRUMENT  
APPROACH CHART  
(IAC)**

TRANSITION		Aerodrome	VAR	Threshold	SANTO DOMINGO
ALT	LEVEL	Elevation		Elevation	ACC 124.300
17000	FL 180	567 ft	270°	556 ft	APP 119.000
					TWR 118.300

**SANTIAGO  
DEL CIBAO INTL  
VOR/DME RWY 29**



CAT	S RWY 29		CIRCLING RWY 11	GS (KTS)	80	100	120	140	160	180	
	OCA/H, CEILING	VIS									
A	1100 (544) 600	1.6	1300(744) 800 1.9	FAF-MAPT: MIN/SEG (3.4 NM)	2:33	2:02	1:42	1:27	1:17	1:08	
B			1380(824) 900 2.8	FAF-THR: MIN/SEG (5.0 NM)	3:45	3:00	2:30	2:08	1:53	1:40	
C			2.4	1760(1204) 1300 4.6	ROD: FT / MIN (FAF to MAPt)	431	539	647	753	859	973
D			2.8		DIST (DME) FAF-MAPT	FAF	5	4	3	MAPt	
				ALTITUD	2200	1973	1649	1325	1100		

CHANGE: MSA AND OCH VALUES.

<b>MDST VOR/DME RWY 29 PROCEDURE DATA</b>					
<b>PUNTO DE REF/ TERMINAL FIX</b>	<b>GEO. COOD</b>	<b>MARCACION BEARING (TRUE/MAG)</b>	<b>DIST. NM</b>	<b>GRAD. DESC. / SLOPE</b>	
IAF: PERPA	19°36'26.30''N 070°35'06.83''W	12 DME ARC	20.93	NIL	
IAF: DATER	19°18'06.55''N 070°25'25.82''W	12 DME ARC	3.14	NIL	
IF: EMBEN	19°21'03.20''N 070°24'02.81''W	285.63°/297.00°	6.3	NIL	
FAF: PITIK	19°22'49.95''N 070°30'26.46''W	285.63°/297.00°	5.0	5.2 %; 3.0°	
MAPt: 2.3 DME SGO	19°23'49.00''N 070°33'53.11''W	285.63°/297.00°	1.6 THR 29	NIL	
TP	NIL	NIL	NIL	NIL	
MAHF: SGO VOR/DME	19°24'26.34''N 070°36'13.70''W	OB: 305.63°/317.00° IB: 125.63°/137.00°	NIL	NIL	