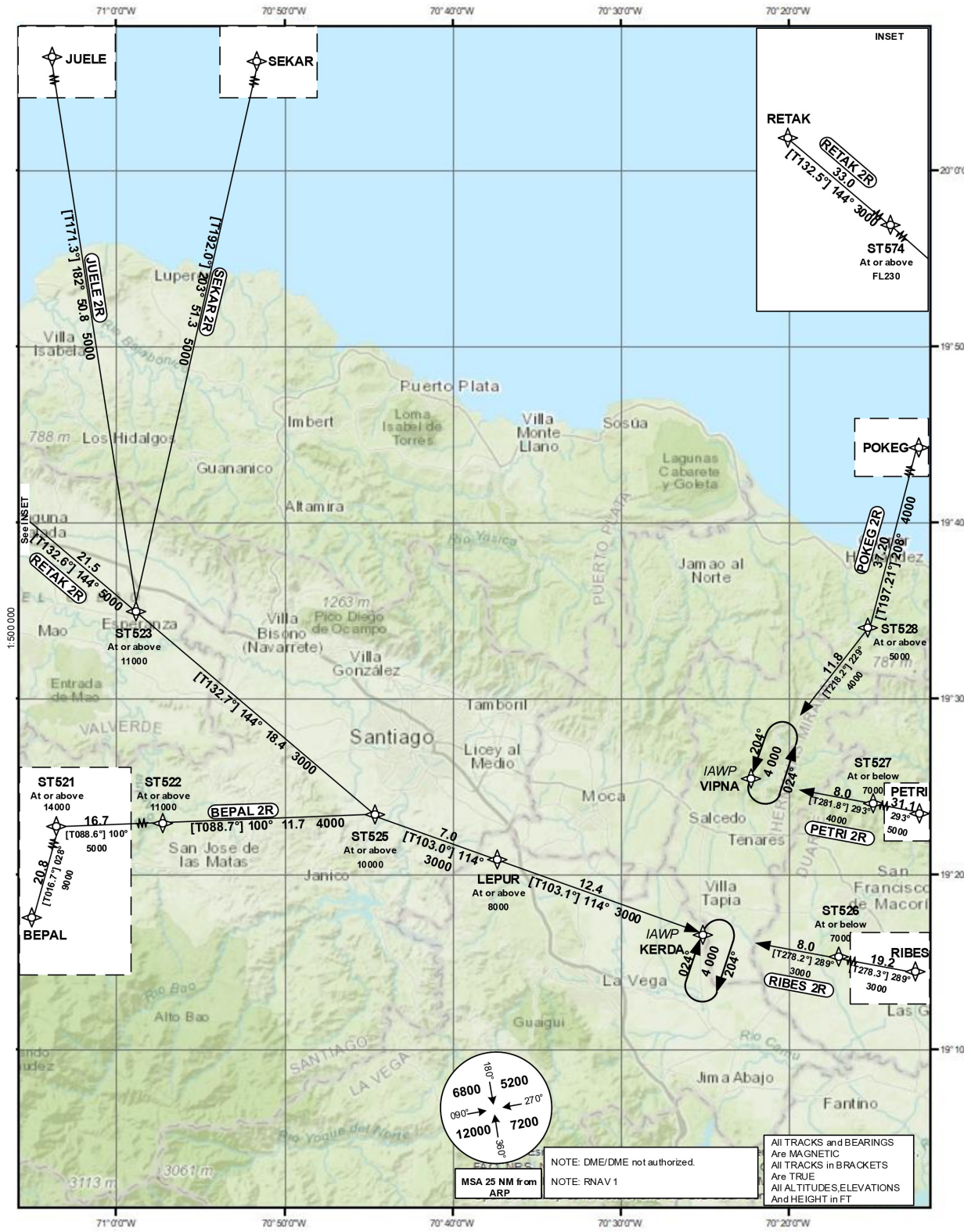


STANDARD ARRIVAL
CHART-INSTRUMENT
(STAR)

TRANSITION		Aerodrome Elevation 567 ft	VAR 23N	SANTO DOMINGO CIBAO SANTIAGO	ACC 124.300 APP 119.000 TWR 118.300
ALT 17000	LEVEL FL 180				

SANTIAGO
DEL CIBAO INTL
RNAV (GNSS) RWY 29



CHANGE: RNAV 1 Note.

STANDARD ARRIVAL ROUTES INSTRUMENT (STAR)			SANTIAGO CIBAO INTL RNAV (GNSS) RWY 29			
Designator	Identification Significant Points	Constraints	MAG (True) Track	Dist NM	MNM IFR Cruising Level	Remarks
BEPAL 2R	BEPAL TWO ROMEO	A14000+;K250+	028(016.7)	20.8	9000	19°01'23.00"N 071°21'04.00"W
	Δ BEPAL	A14000+;K250-;R	100(088.6)	16.7	5000	19°21'25.40"N 071°14'44.37"W
	Δ ST521	A11000+;K220-	100(088.7)	11.7	4000	19°21'49.82"N 070°57'00.92"W
	Δ ST522	A10000+;K210-;R	114(103.0)	7.0	3000	19°22'05.80"N 070°44'38.92"W
	Δ ST525	A8000+;K210-	114(103.1)	12.4	3000	19°20'31.11"N 070°37'26.08"W
PETRI 2R	PETRI TWO ROMEO	A9000-;K250-	293(281.8)	31.1	5000	19°16'06.00"N 069°42'30.00"W
	Δ PETRI	A7000-;K220-	293(281.8)	8.0	4000	19°23'51.59"N 070°14'22.58"W
	Δ ST527	A4000+;K210-				19°25'30.09"N 070°22'41.70"W
	Δ VIPNA					
RETAK 2R	RETAK TWO ROMEO	FL230+;K250+	144(132.5)	33.0	3000	20°11'42.00"N 071°41'30.00"W
	Δ RETAK	FL230+;K250-	144(132.6)	21.5	5000	19°49'17.17"N 071°15'41.89"W
	Δ ST574	A11000+;K250-	144(132.7)	18.4	3000	19°34'38.69"N 070°58'56.49"W
	Δ ST523	A10000+;K210-;L	114(103.0)	7.0	3000	19°22'05.80"N 070°44'38.92"W
	Δ ST525	A8000+;K210-	114(103.1)	12.4	3000	19°20'31.11"N 070°37'26.08"W
RIBES 2R	RIBES TWO ROMEO	A9000-;K250-	289(278.3)	19.2	3000	19°13'48.00"N 069°56'05.00"W
	Δ RIBES	A7000-;K210-	289(278.2)	8.0	3000	19°16'32.41"N 070°16'12.49"W
	Δ ST526	A4000+;K210-				19°17'40.75"N 070°24'36.53"W
	Δ KERDA					
SEKAR 2R	SEKAR TWO ROMEO	A11000+;K250+	203(192.0)	51.3	5000	20°25'00.00"N 070°47'42.00"W
	Δ SEKAR	A11000+;K250-;L	144(132.7)	18.4	3000	19°34'38.69"N 070°58'56.49"W
	Δ ST523	A10000+;K210-;L	114(103.0)	7.0	3000	19°22'05.80"N 070°44'38.92"W
	Δ ST525	A8000+;K210-	114(103.1)	12.4	3000	19°20'31.11"N 070°37'26.08"W
	Δ LEPUR	A4000+;K210-				19°17'40.75"N 070°24'36.53"W
JUELE 2R	JUELE TWO ROMEO	A11000+;K250+	182(171.3)	50.8	5000	20°25'03.50"N 071°07'06.63"W
	Δ JUELE	A11000+;K250-;L	144(132.7)	18.4	3000	19°34'38.69"N 070°58'56.49"W
	Δ ST523	A10000+;K210-;L	114(103.0)	7.0	3000	19°22'05.80"N 070°44'38.92"W
	Δ ST525	A8000+;K210-	114(103.1)	12.4	3000	19°20'31.11"N 070°37'26.08"W
	Δ LEPUR	A4000+;K210-				19°17'40.75"N 070°24'36.53"W
POKEG 2R	POKEG TWO ROMEO	A12000+;K250+	208(197.21)	37.2	4000	20°10'30.00"N 070°03'18.00"W
	Δ POKEG	A5000+;K220-	229(218.2)	11.8	4000	19°34'49.47"N 070°14'57.33"W
	Δ ST528	A4000+;K210-				19°25'30.09"N 070°22'41.70"W
	Δ VIPNA					
DME/DME not authorized.						