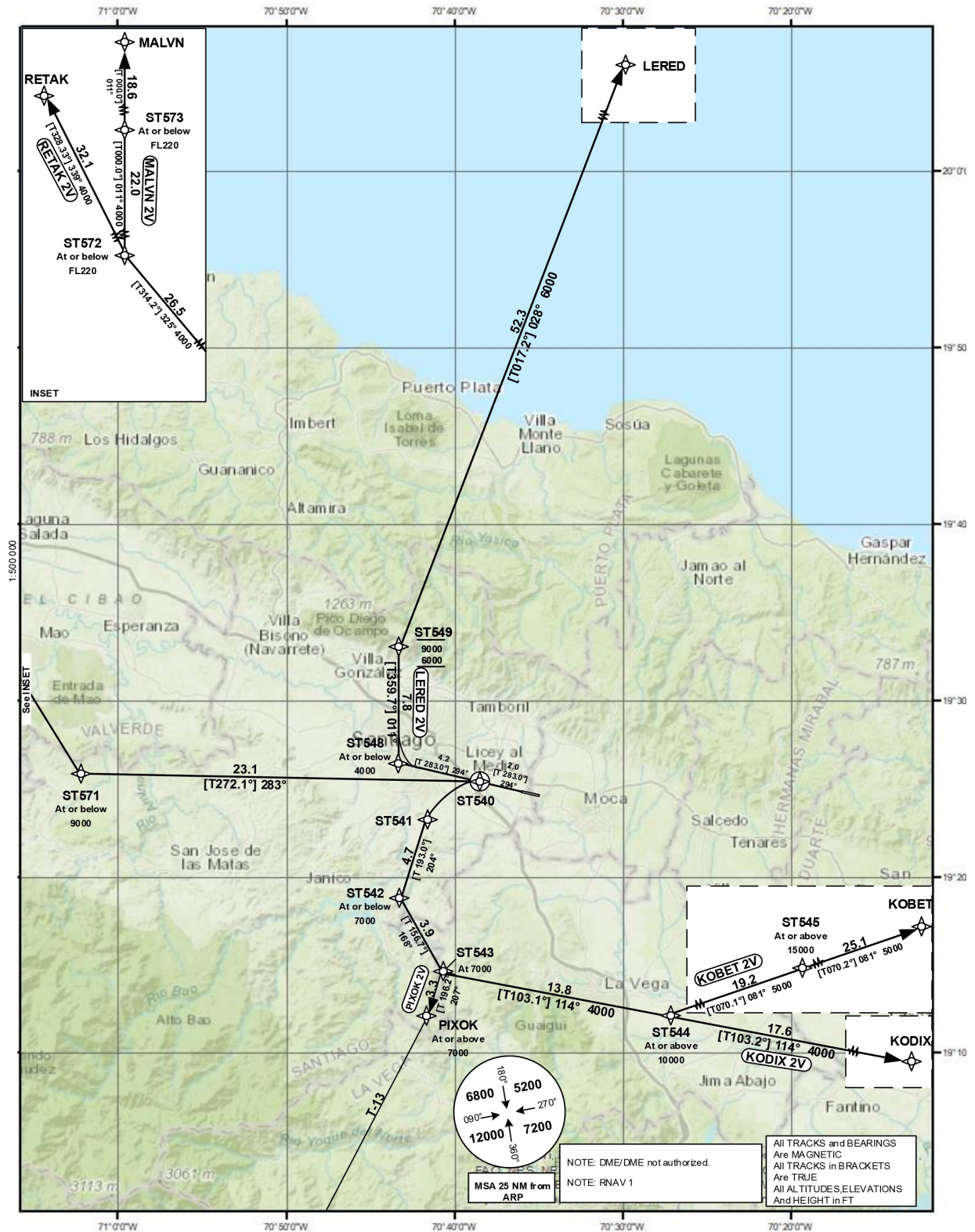


STANDARD DEPARTURE
CHART-INSTRUMENT
(SID)

TRANSITION		Aerodrome Elevation 567 ft	VAR ↗	SANTO DOMINGO CIBAO SANTIAGO	ACC 124.300 APP 119.000 TWR 118.300
ALT 17000	LEVEL FL 180				

SANTIAGO
DEL CIBAO INTL
RNAV (GNSS) RWY 29



CHANGE: RNAV 1 Note.

STANDARD DEPARTURE
ROUTES-INSTRUMENT
(SID)

SANTIAGO
CIBAO INTL
RNAV (GNSS) RWY 29

Designator	Route	After Take-Off		Remarks	
		Climb to	Contact	Points	Coordinates
1	2	3	4	5	6
LERED 2V*	LERED TWO VICTOR	4000	Santo Domingo ACC 124.300 ACC 124.600	ST548	19°25'55.89"N 070°43'26.31"W
	Climb on track 294° to ST548; RT on track 011° to ST549; RT on track 028° to LERED. CLIMB WITH 7.0%/430FT PER NM UNTIL PASSING 6000. [A1000+] — ST548 [A4000-; R] — ST549 [A9000- / A6000+; R] — LERED.			ST549	19°33'48.21"N 070°43'28.63"W
				LERED	20°23'54.80"N 070°27'03.50"W
MALVN 2V*	MALVN TWO VICTOR	9000		ST540	19°24'58.68"N 070°39'04.66"W
	Climb on track 294° to ST540; LT on track 283° to ST571; RT on track 325° to ST572; RT on track 000° via ST573 to MALVN. CLIMB WITH 5.0%/300FT PER NM UNTIL PASSING 3000. [A1000+] — ST540 [L] — ST571 [A9000-; R] — ST572 [FL220-; R] — ST573 [FL220-] — MALVN.			ST571	19°25'46.69"N 071°03'27.27"W
				ST572	19°44'15.97"N 071°23'34.01"W
				ST573	20°06'20.94"N 071°23'34.01"W
				MALVN	20°25'00.00"N 071°23'33.67"W
KOBET 2V*	KOBET TWO VICTOR	7000		ST540	19°24'58.68"N 070°39'04.66"W
	Climb on track 294° to ST540; LT via ST541 on track 204° to ST542; LT on track 168° to ST543; LT on track 114° to ST544; LT on track 081° via ST545 to KOBET. CLIMB WITH 5.0%/300FT PER NM UNTIL PASSING 3000. [A1000+] — ST540 [L] — ST541 — ST542 [A7000-; L] — ST543 [A7000; L] — ST544 [A10000+; L] — ST545 [A15000+] — KOBET.			ST541	19°23'36.27"N 070°41'23.56"W
				ST542	19°18'59.34"N 070°42'30.77"W
				ST543	19°15'23.59"N 070°40'52.80"W
				ST544	19°12'14.09"N 070°26'39.42"W
				ST545	19°18'47.37"N 070°07'31.27"W
				KOBET	19°27'30.00"N 069°43'04.00"W
KODIX 2V*	KODIX TWO VICTOR	7000		ST540	19°24'58.68"N 070°39'04.66"W
	Climb on track 294° to ST540; LT via ST541 on track 204° to ST542; LT on track 168° to ST543; LT on track 114° via ST544 to KODIX. CLIMB WITH 5.0%/300FT PER NM UNTIL PASSING 3000. [A1000+] — ST540 [L] — ST541 — ST542 [A7000-; L] — ST543 [A7000; L] — ST544 [A10000+] — KODIX.			ST541	19°23'36.27"N 070°41'23.56"W
				ST542	19°18'59.34"N 070°42'30.77"W
				ST543	19°15'23.59"N 070°40'52.80"W
				ST544	19°12'14.09"N 070°26'39.42"W
				KODIX	19°08'12.00"N 070°08'33.00"W
RETAK 2V*	RETAK TWO VICTOR	9000		ST540	19°24'58.68"N 070°39'04.66"W
	Climb on track 294° to ST540; LT on track 283° to ST571; RT on track 325° to ST572; RT on track 339° to RETAK. CLIMB WITH 5.0%/300FT PER NM UNTIL PASSING 3000. [A1000+] — ST540 [L] — ST571 [A9000-; R] — ST572 [FL220-; R] — RETAK.			ST571	19°25'46.69"N 071°03'27.27"W
				ST572	19°44'15.97"N 071°23'34.01"W
				RETAK	20°11'42.00"N 071°41'30.00"W
PIXOK 2V*	PIXOK TWO VICTOR	7000		ST540	19°24'58.68"N 070°39'04.66"W
	Climb on track 294° to ST540; LT via ST541 on track 204° to ST542; LT on track 168° to ST543; RT on track 207° to PIXOK. CLIMB WITH 5.0%/300FT PER NM UNTIL PASSING 3000. [A1000+] — ST540 [L] — ST541 — ST542 [A7000-; L] — ST543 [A7000; R] — PIXOK [A7000+].			ST541	19°23'36.27"N 070°41'23.56"W
				ST542	19°18'59.34"N 070°42'30.77"W
				ST543	19°15'23.59"N 070°40'52.80"W
				PIXOK	19°12'11.13"N 070°41'51.66"W

*Procedure Design Gradient due to Obstacles / Terrain. If unable to comply advise ATC prior to start-up.