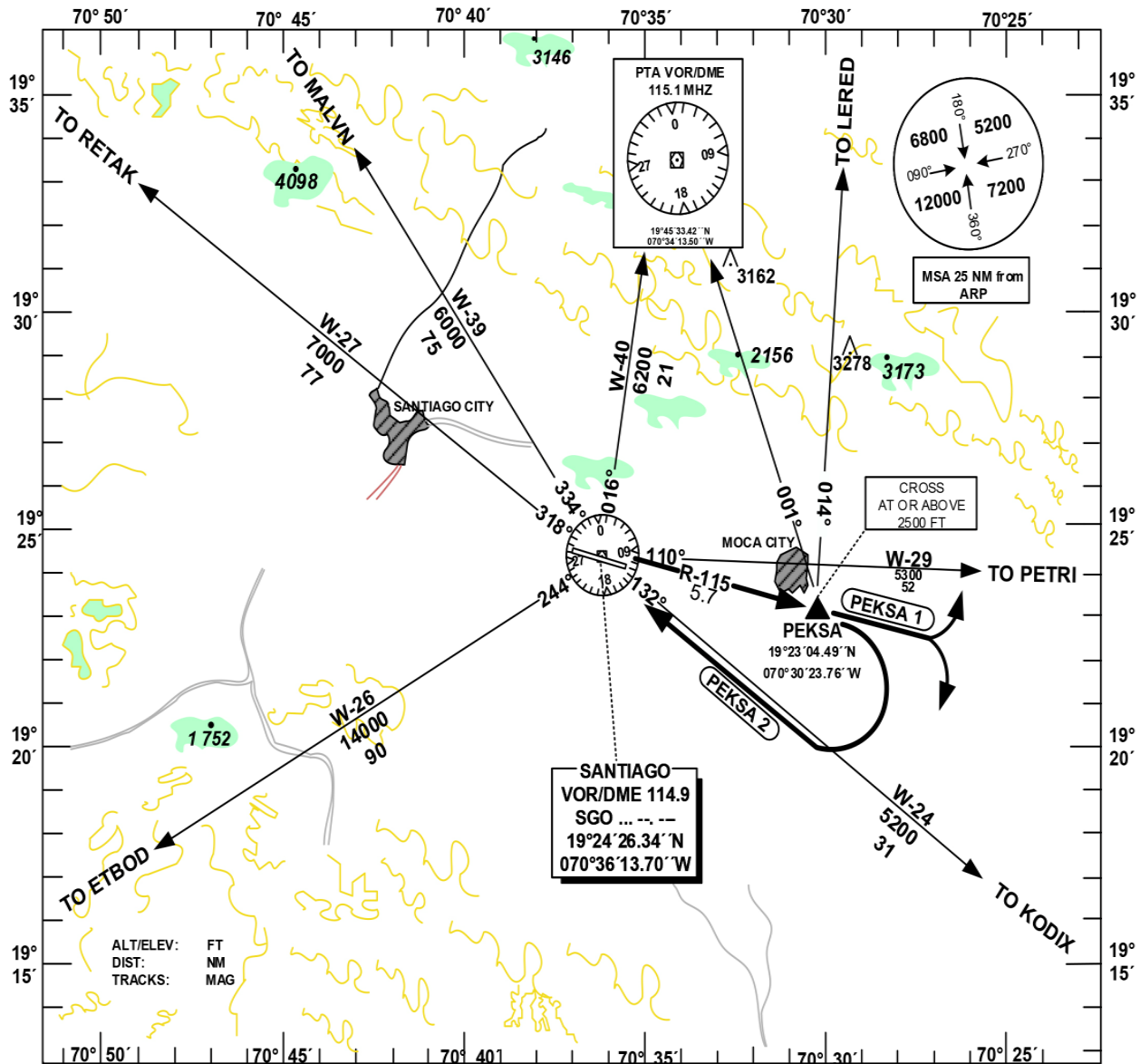


STANDARD DEPARTURE
CHART -INSTRUMENT
(SID)

TRANSITION		Aerodrome	VAR	SANTO DOMINGO	ACC 124.300
ALT 17000	LEVEL FL 180	Elevation 567 ft		CIBAO	APP 119.000
				SANTIAGO	TWR 118.300

SANTIAGO
DEL CIBAO INTL
VOR/DME RWY 11
PEKSA 1, PEKSA 2 DEP



TAKE OFF RWY 11:

PEKSA 1: CLIMB ON R-115 OF SGO VOR/DME UNTIL REACHING 4200 FT, THEN, DCT TO PTA VOR/DME, PETRI, KODIX, MALVN, LERED OR USER PREFERRED ROUTE. CROSS PEKSA AT OR ABOVE 2500 FT.

PEKSA 2: CLIMB ON R-115 OF SGO VOR/DME, CROSS PEKSA AT OR ABOVE 2500 FT. OVER PEKSA RIGHT CLIMBING TURN DCT TO SGO VOR/DME AT OR ABOVE 5300 FT, THEN, DCT TO PTA VOR/DME, RETAK OR ETBOD.

CHANGE: PEKSA 1 TRANSITIONS.